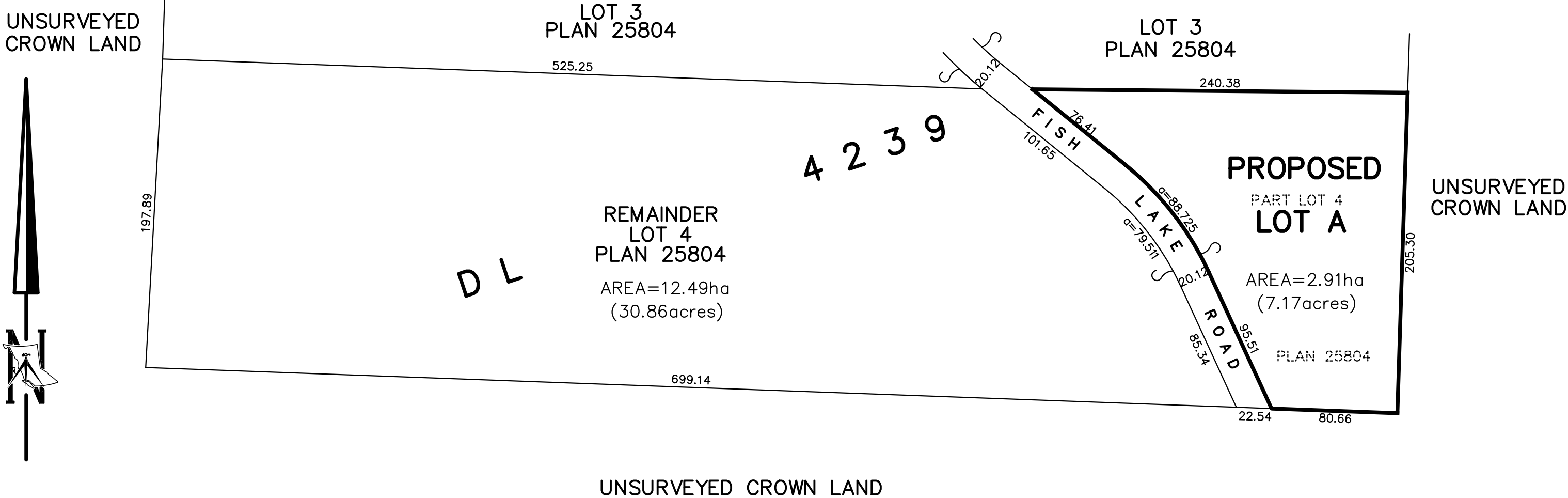


SKETCH PLAN TO ACCOMPANY A REZONING AND SUBDIVISION APPLICATION OF LOT 4, DL 4239, ODYD, PLAN 25804

BCGS 82E.061
SCALE 1:2500



THE INTENDED PLOT SIZE OF THIS PLAN IS 432mm IN WIDTH BY 280mm IN HEIGHT (B SIZE) WHEN PLOTTED AT A SCALE OF 1:2500



LEGEND

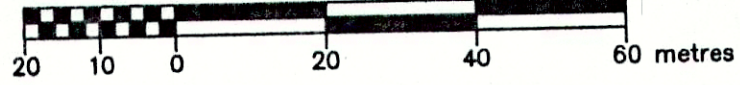
THIS PLAN LIES WITHIN THE REGIONAL DISTRICT OF OKANAGAN SIMILKAMEEN
ALL DIMENSIONS ARE IN METRES AND DECIMALS THEREOF UNLESS OTHERWISE NOTED

STEVEN J. BUZIKIEVICH
PROFESSIONAL LAND SURVEYOR
54 NANAIMO AVENUE EAST
PENTICTON, B.C. V2A 1L9
Phone: (250)492-0559 Fax: (250)492-9851
FILE 22-0263
DWG. 22-0263A

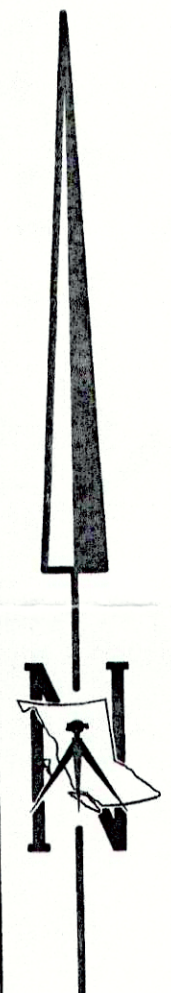
POSTING PLAN OF PART OF LOT 4, DL 4239, ODYD, PLAN 25804
 PURSUANT TO SECTION 68 OF THE LAND TITLE ACT

PLAN EPP78396

BCGS 82E.061
 SCALE 1:1000



THE INTENDED PLOT SIZE OF THIS PLAN IS 560mm IN WIDTH BY 432mm IN HEIGHT (C SIZE) WHEN PLOTTED AT A SCALE OF 1:1000



LOT 3
 PLAN 25804

LOT 3
 PLAN 25804

4239

Datum: NAD83(CSRS) 4.0.0.BC.1
 UTM Zone 11 Coordinates
 Northing: 5507992.79
 Easting: 295164.02
 Point Combined Factor: 0.9999793
 Estimated horizontal positional accuracy: 0.2m

LOT 4
 PLAN 25804
 APPROX 31 ACRES

LOT 4
 PLAN 25804
 APPROX 7 ACRES

UNSURVEYED
 CROWN LAND

- X - HYDRO/TEL POLE
 - A - ANCHOR
 - HYDRO/TEL UTILITY
 - NO SURFACE WATER
 - DARKE CREEK
 - O - POSSIBLE WELL LOCATION
- LEGEND**

GRID BEARINGS ARE DERIVED FROM GNSS OBSERVATIONS AND ARE REFERRED TO THE CENTRAL MERIDIAN OF UTM ZONE 11 NORTH.
 THE UTM COORDINATES AND ESTIMATED HORIZONTAL POSITIONAL ACCURACY ARE DERIVED USING 5.5 HOURS OF GNSS DUAL FREQUENCY OBSERVATIONS AND PROCESSED USING THE CSRS-PPP ONLINE PROCESSING PROVIDED BY NATURAL RESOURCES CANADA.

THIS PLAN SHOWS HORIZONTAL GROUND-LEVEL DISTANCES UNLESS OTHERWISE SPECIFIED. TO COMPUTE GRID DISTANCES, MULTIPLY GROUND-LEVEL DISTANCES BY THE AVERAGE COMBINED FACTOR OF 0.9999813. THE AVERAGE COMBINED FACTOR HAS BEEN DETERMINED BASED ON AN ELLIPSOIDAL ELEVATION OF 830 METRES.

ALL DIMENSIONS ARE IN METRES AND DECIMALS THEREOF UNLESS OTHERWISE NOTED.

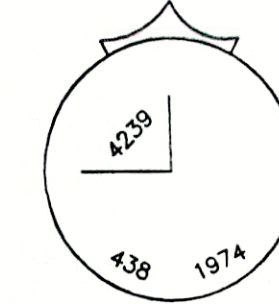
- ⊙ STANDARD CAPPED POST FOUND
- STANDARD IRON POST FOUND
- STANDARD IRON POST PLACED

THIS PLAN LIES WITHIN THE OKANAGAN SIMILKAMEEN REGIONAL DISTRICT.

THE FIELD SURVEY REPRESENTED BY THIS PLAN WAS COMPLETED ON THE 23rd DAY OF NOVEMBER, 2017. STEVEN J. BUZIKIEVICH BCLS #600

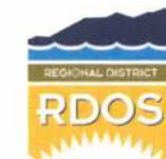
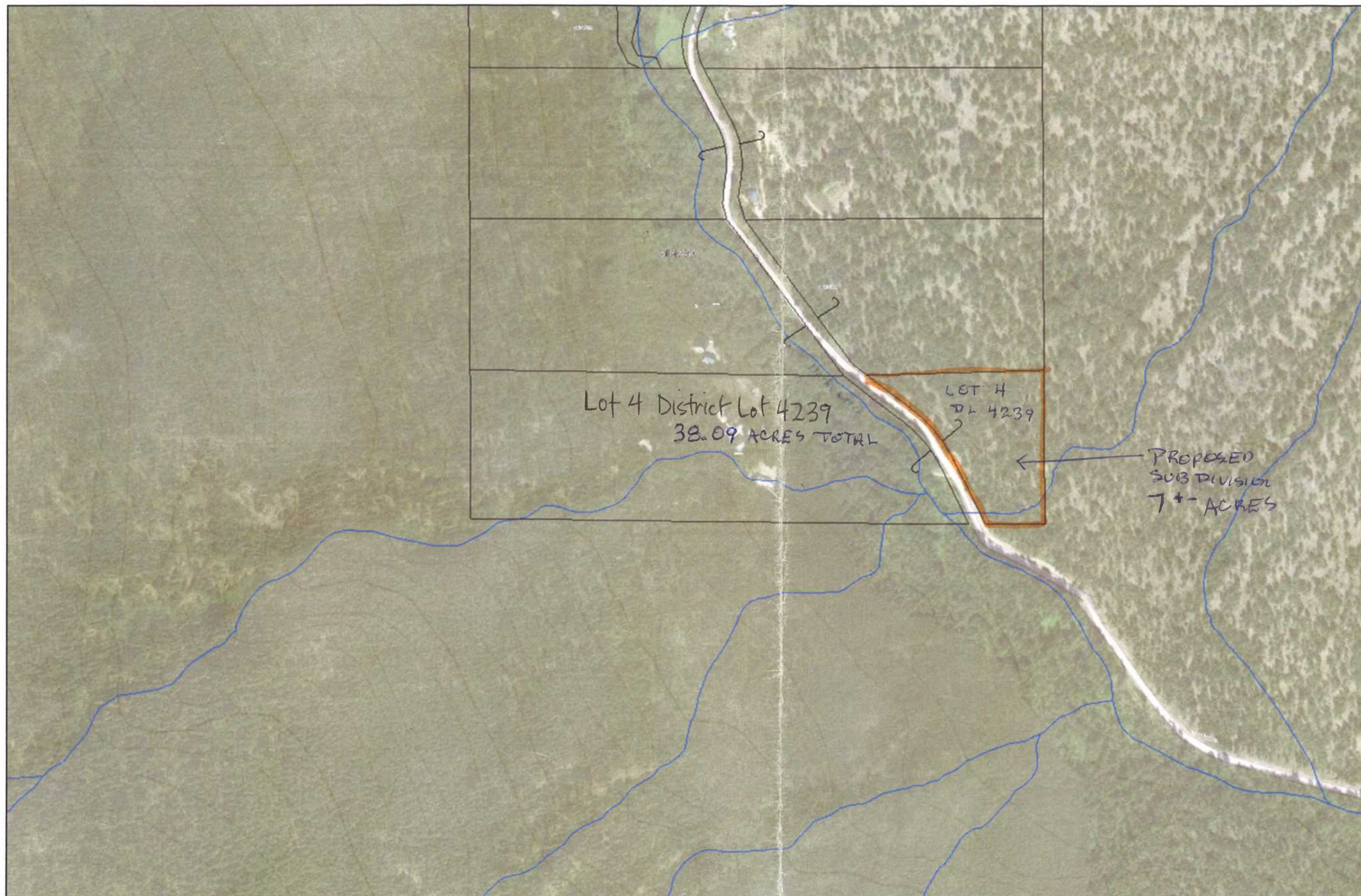
THE PLAN WAS COMPLETED AND CHECKED, AND THE CHECKLIST FILED UNDER #206120, ON THE 30th DAY OF NOVEMBER, 2017.

Datum: NAD83(CSRS) 4.0.0.BC.1
 UTM Zone 11 Coordinates
 Northing: 5507791.42
 Easting: 295054.31
 Point Combined Factor: 0.9999881
 Estimated horizontal positional accuracy: 0.2m



UNSURVEYED CROWN LAND

STEVEN J. BUZIKIEVICH
 PROFESSIONAL LAND SURVEYOR
 54 NANAIMO AVE. E.
 PENTICTON, B.C.
 Phone: (250)492-0559 Fax: (250)492-9851
 FILE 17-162 FB. 205 PG. 94
 DWG. 17-162A



OKANAGAN-SIMILKAMEEN

RDOS Map

Legend

Okanagan Lake East / Skaha Areas "D" & "E")

- Hazard of land receiving slide or s
- Hazard of materials sliding or slurr
- Hazard of slumps and slides Site investigations recommended wher is anticipated.
- Low to moderate hazard, see repr
- Limited or no hazard of slumps an problems anticipated
- Outside Study Area

West Bench/Sage Mesa (Elec

- Landslide Hazard
- Sinkhole Hazard
- Silt Bluff Hazard
- Gravel or Bedrock
- Outside Study Area

- Parcels
- Electoral Area Boundaries
- Major Highways
- Indian Reserve
- Parks
- Streams
- Small Lake Labels
- Major Lakes
- Small Lakes

1:8,000



406.4 203.20 406.4 Meters

WGS_1984_Web_Mercator_Auxiliary_Sphere
© Regional District Okanagan-Similkameen

This is a consolidated map compiled from representational data to be used for convenience only and has no legal sanction. The Regional District of Okanagan-Similkameen makes no warranty to the correctness or accuracy of the information on this map.