





**Construction Notes**

**FRAMED WALLS:**  
Siding to Match Existing House  
2 Layers of Building Wrap Single Lapped  
and Flashed at All Penetrations  
7/16" OSB Sheeting  
(Or Equivalent Sheeting)  
2x4 Top and Bottom Plates  
4x4 Studs 16" o.c.  
R24 Batt Insulation  
6 mil Vapor Barrier  
1/2" Drywall

Interconnected  
Smoke and CO2 Detector



**NOTES:**  
GROUND FLOOR WINDOW UNITS  
@ Top of Wall Framed Down to 6'-8" UNLESS NOTED

UPPER FLOOR WINDOWS UNITS  
@ Top of Wall, Framed Down to 5'-8" UNLESS NOTED

ALL UNITS 2-2x10 UNLESS  
SPECIFIED BY FLOOR SUPPLIER,  
TRUSS SUPPLIER.

INTERIOR DOORS ARE 6'-0"  
UNLESS NOTED

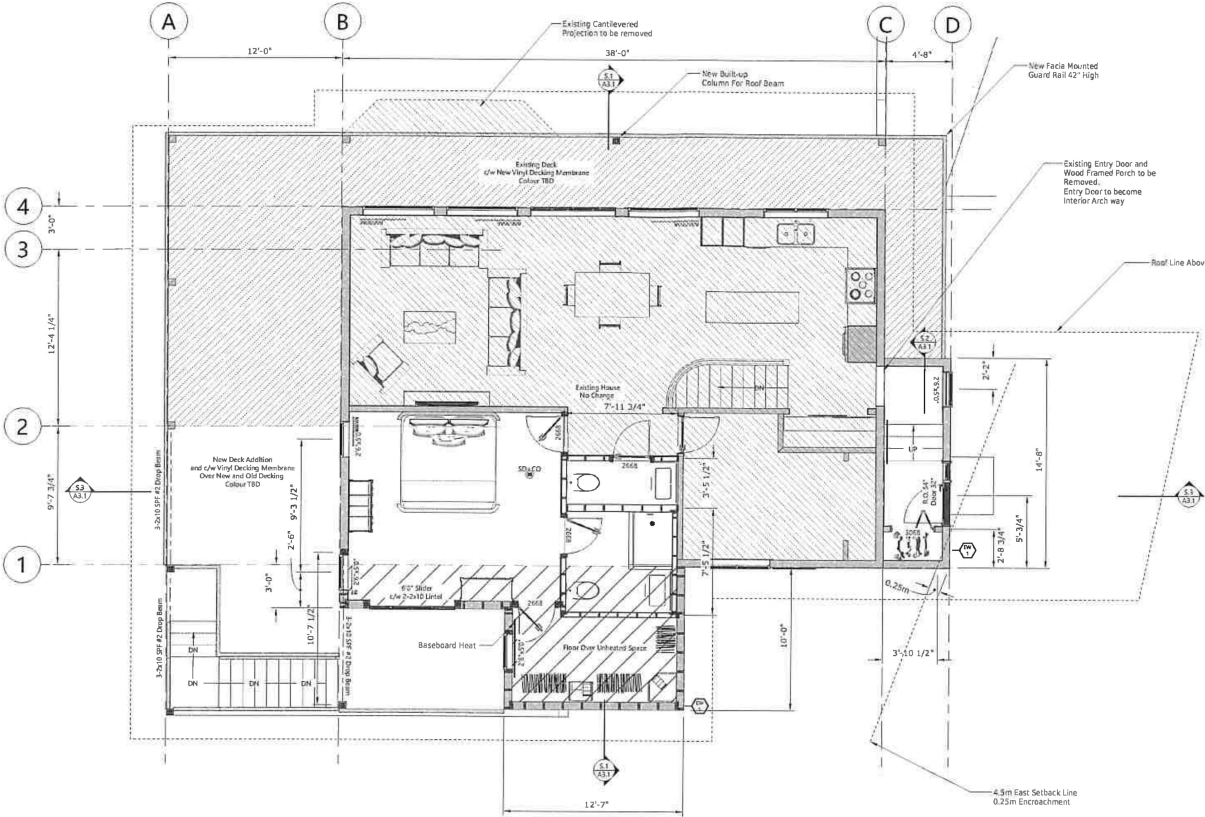
SPRAY FOAM R24, TO  
RIM JOISTS AND BOX ENDS.

WINDOWS "U" VALUE OF 1.7  
SHGC 0.7 (AWARDS)

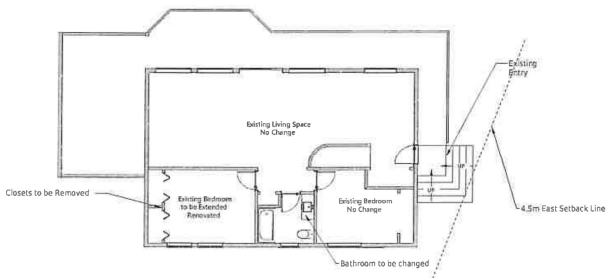
HANDRAILS .865MM MIN. - .865MM  
MAX HEIGHT

NDN - COMBUSTIBLE DRAINS IN  
FIRE SEPARATION (TYPICAL)

**NOTE:**  
STAIRS  
1" TREAD, 10" RIM  
3/4" x .865  
PROVIDE 5'-0" MIN. FINISHED WALL TO WALL WIDTH  
PROVIDE 6'-4" MIN. FINISHED HEADROOM



**C Upper Floor**  
A1.3 Scale: 1/4"=1' (1:48)



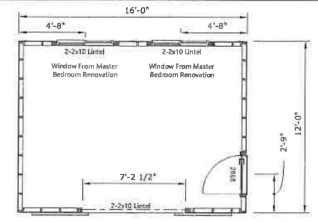
**C.1 Existing Upper Floor**  
A1.3 Scale: 1/8"=1' (1:96)

**Construction Notes**

**FRAMED WALLS:**  
Siding to Match Existing House  
2 Layers of Building Wrap Single Lapped  
and Flashed at All Penetrations  
7/16" OSB Sheeting  
(Or Equivalent Sheeting)  
2x4 Top and Bottom Plates  
4x4 Studs 16" o.c.  
Unfinished Interior



**C.2 SHED Upper Floor**  
A1.3 Scale: 1/4"=1' (1:48)



THESE DIMENSIONS ARE TO FACE UNLESS NOTED OTHERWISE. ALL DIMENSIONS ARE TO FACE UNLESS NOTED OTHERWISE. THE CONTRACTOR SHALL VERIFY ALL DIMENSIONS AND CHECKS FOR THE DIMENSIONS. THE CONTRACTOR SHALL BE RESPONSIBLE FOR THE DIMENSIONS FROM THE DRAWING.