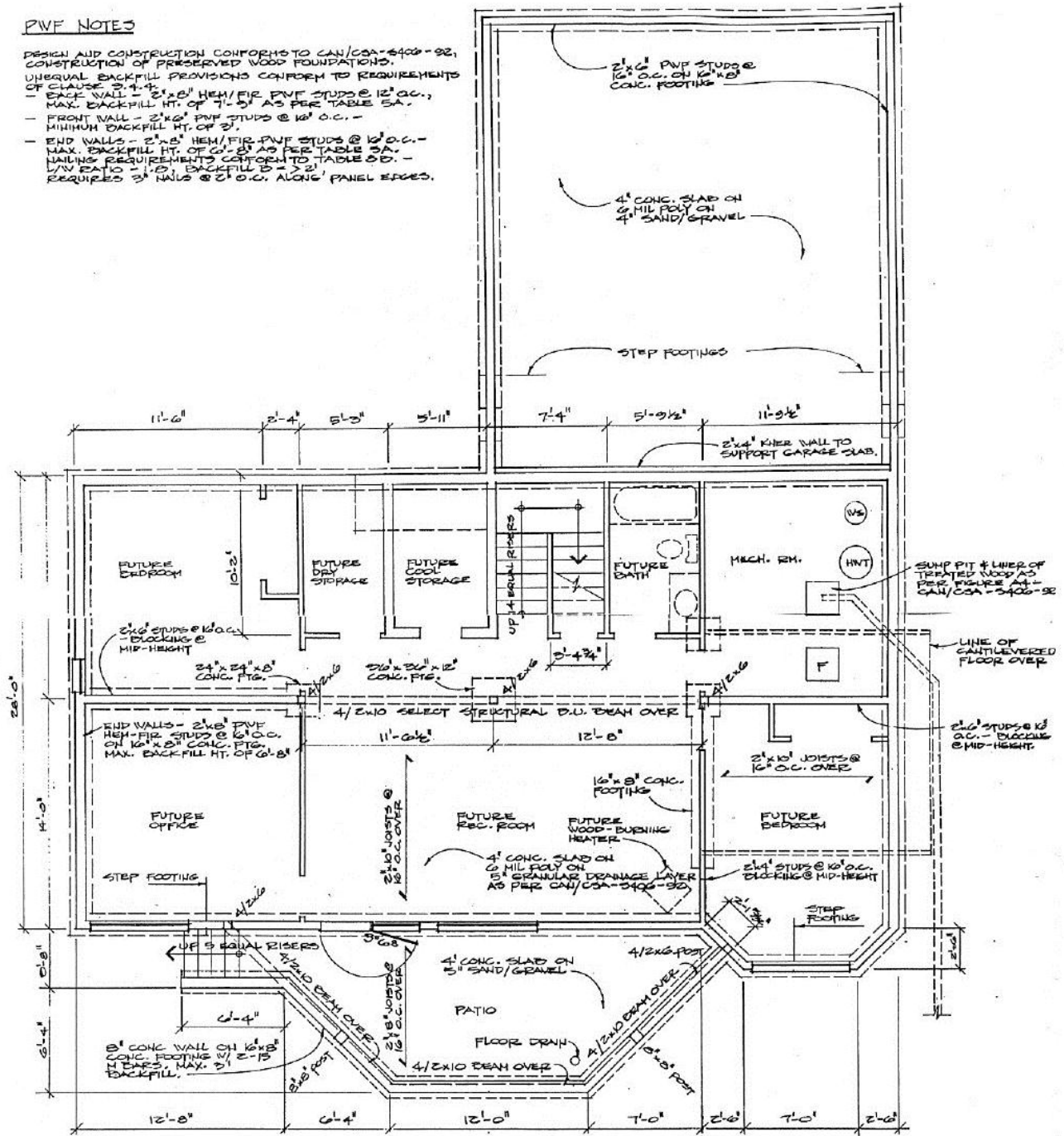




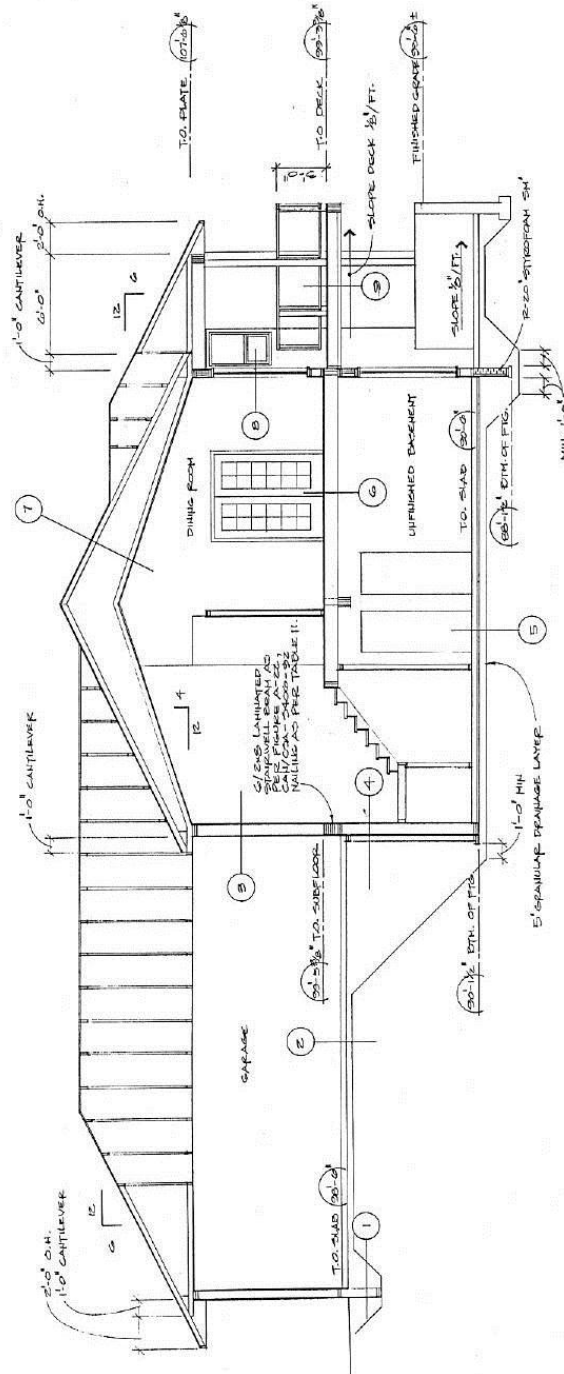
**PWF NOTES**

- DESIGN AND CONSTRUCTION CONFORMS TO CAN/CSA-S408-92, CONSTRUCTION OF PRESERVED WOOD FOUNDATIONS.
- UNEQUAL BACKFILL PROVISIONS CONFORM TO REQUIREMENTS OF CLAUSE 3.4.4.
- BACK WALL - 2"x8" HEM/FIR PWF STUDS @ 12" O.C., MAX. BACKFILL HT. OF 7'-0" AS PER TABLE 5A.
  - FRONT WALL - 2"x8" PWF STUDS @ 16" O.C. - MINIMUM BACKFILL HT. OF 3'.
  - END WALLS - 2"x8" HEM/FIR PWF STUDS @ 16" O.C. - MAX. BACKFILL HT. OF 6'-8" AS PER TABLE 5A.
  - NAILING REQUIREMENTS CONFORM TO TABLE 5D. - L/V RATIO = 1:2, BACKFILL D = > 2' REQUIRES 3" NAILS @ 2' O.C. ALONG PANEL EDGES.



**BASEMENT PLAN - AREA = 1423 + UNFINISHED**  
 SCALE: 1/4" = 1'-0"

**TYPICAL BASEMENT PLAN**



SECTION A-A SCALE: 1/4" = 1'-0"

### TYPICAL CROSS SECTION

#### SPECIFICATIONS

- 1 GARAGE FOUNDATION  
1/2" PVF PLYWOOD ON 2"x6" PVF STUDS @ 16" O.C. ON 2"x6" PVF FOOTING PLATE.
- 2 GARAGE SLAB  
4" CONC. SLAB ON 6 MIL POLY ON COMPACTED GRAVEL
- 3 EXTERIOR WALL  
SITE SPECIFIC FINISH ON 3/8" OSB SHEATHING ON 2"x4" 2 MIL POLY V.B. ON R-28 INS.
- 4 FOUNDATION WALL & GARAGE  
2"x4" PVF HEAVY END TRUSS @ 12" O.C. 2"x6" PVF RAFTERS ON 1/2" OSB SHEATHING ON 2"x4" 2 MIL POLY V.B. ON R-28 INS. 2"x6" PVF STUDS ON 1/2" OSB SHEATHING ON 2"x4" 2 MIL POLY V.B. ON R-28 INS.
- 5 BASEMENT SLAB  
3/4" CONCRETE SLAB ON 1" INSULATION 5M ON 6 MIL POLY ON 5" GRANULAR DRAINAGE LAYER
- 6 MAIN FLOOR  
FINISHED FLOOR ON 3/8" T&G FIR PLYWOOD ON 2"x6" JOISTS @ 16"
- 7 ROOF  
ASPHALT SHINGLES ON 1/2" OSB SHEATHING ON ENGINTEERED TRUSSES @ 24" O.C. CEILING FINISH ON 2"x4" PVF V.B. ON R-40 FIRERESISTANCE INSULATION ON 2"x6" PVF STUDS ON 2"x4" PVF FOOTING PLATE.
- 8 EXTERIOR WALL (SOUTH ONLY)  
EXTERIOR FINISH ON 3/8" OSB SHEATHING ON 2"x4" PVF STUDS @ 24" O.C. 2"x6" GIPSON JOIST ON 2 MIL POLY V.B. ON R-28 FIREGLASS INS.
- 9 DECK  
VINYL DECK COVERING ON 3/8" T&G FIR PLYWOOD ON 2"x6" JOISTS @ 16" O.C.



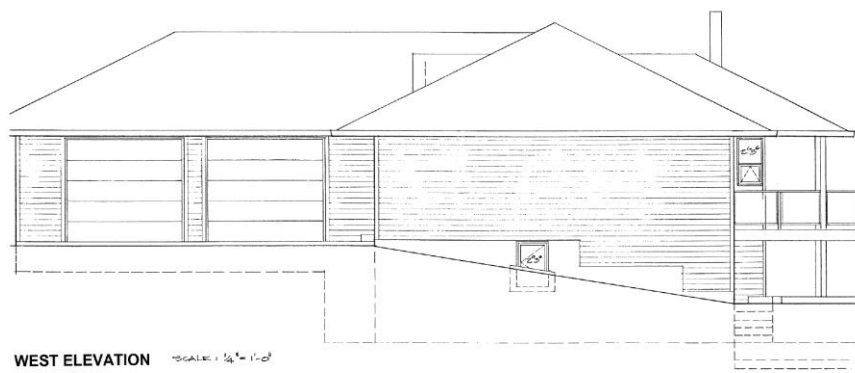
**SOUTH ELEVATION** SCALE: 1/4" = 1'-0"



**NORTH ELEVATION** SCALE: 1/4" = 1'-0"



**EAST ELEVATION** SCALE: 1/4" = 1'-0"



**WEST ELEVATION** SCALE: 1/4" = 1'-0"