

APEX MOUNTAIN - RESIDENTIAL LARGE ITEM CURBSIDE COLLECTION

>> **NEW PROGRAM** <<



- Large Item Curbside Collection Day: April 26, 2023
- Place to the curb before 7:00 a.m. and where a large truck can access to collect
- For properties with difficult access or a tight turnaround, group large items together in 1 spot

What is Accepted and How Many?

Accepted Large Items: maximum 2 items per household, maximum item weight 90 kg (200 lbs)

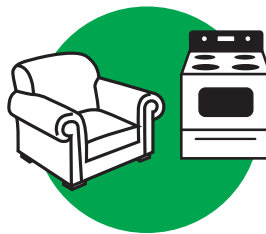
✓ **Furniture** such as couches, desks, chairs, entertainment centers, shelving, cat towers

✓ **Mattress or Box Spring**
Placing out a mattress & a box spring counts as 2 items

✓ **Large Appliances** such as dishwashers, microwaves, stoves, range hoods, freezers, refrigerators, dryers, washing machines, air conditioners.
NO hot water tanks (*see Items Not Accepted*)

✓ **Gym Equipment**

**MAXIMUM
2 large items
per household**



✓ **Older Fridges & Freezers with Locking Doors** - for safety reasons, please remove door and shelves and place beside the unit for collection

✓ **Barbeques** accepted when hoses, tanks & dripping tray container of oil is removed before placing at the curb

✓ **Area carpets** with a bound edge or fringe - rolled & taped securely, under 6 feet (1.8 m)

✓ **Blinds** taped securely, cords removed, under 6 feet (1.8 m)

WHERE TO PLACE? See Other Side



Items Not Accepted:

- ✗ NO electronics or small plug-in items such as TVs, computer monitors or other electronics
- ✗ NO vacuums, carpet cleaners, fans, toaster ovens or other small plug-in items (*see ElectroRecycle*)
- ✗ NO floor or table lamps (*see Recycle Lights in BC – ProductCare Recycling*)
- ✗ NO renovation or demolition waste, doors, toilets, bathroom/kitchen cabinets or fixtures
- ✗ NO hot tubs or lids, hot water tanks, flooring, heat pumps, furnace, or plumbing
- ✗ NO room carpets or underlay (area carpet accepted with conditions - refer to *What is Accepted*)
- ✗ NO concrete items (such as blocks, fountains, lawn or garden ornaments), or other random materials
- ✗ NO gas or battery powered equipment such as lawn mowers, or power tools
- ✗ NO items weighing over 90 kg / 200 lbs



WHERE TO DISPOSE? See Other Side



Apex Mountain Residential
LARGE ITEM CURBSIDE COLLECTION DAY
ONE DAY ONLY: Wednesday, April 26, 2023



WHEN:

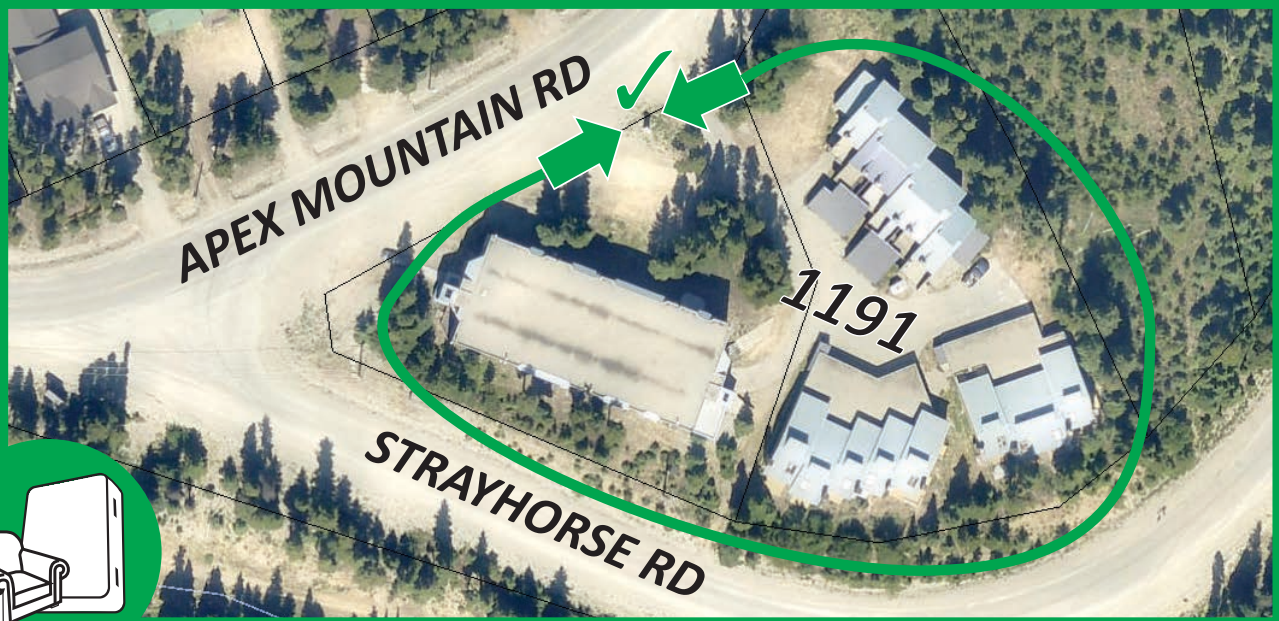
Place a maximum of two (2) Accepted Large Items at your curb before 7:00 a.m.
Wednesday April 26, 2023



WHERE:

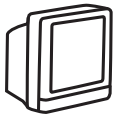
Place where a large truck can access to collect -
see note below

IMPORTANT NOTE: For properties with difficult access or a tight turnaround, group large items together in 1 location with easy access for a large truck



Max. 2 large items per household

For "Items Not Accepted":



Take computers, monitors and TVs directly to FREE recycling depots: find a list of depots at RecycleMyElectronics.ca/bc

Find recycling depots for drills, vacuums, fans, power tools, and other small plug-in appliances: ElectroRecycle.ca



Find options for floor or table lamps, and lightbulbs: LightRecycle.ca

What if my Accepted Large Item (*see other side*) has not been collected?

If the accepted large item was placed at the curb before 7:00 a.m., and if the large item was not collected on your Large Item Collection day, please contact the Curbside Contractor, Waste Connections of Canada by phone or email that evening or the next morning. Leave a message and include your address, contact info, and reason for calling.

Waste Connections

phone: 250-490-3888

email: csrpenticton@wasteconnections.com