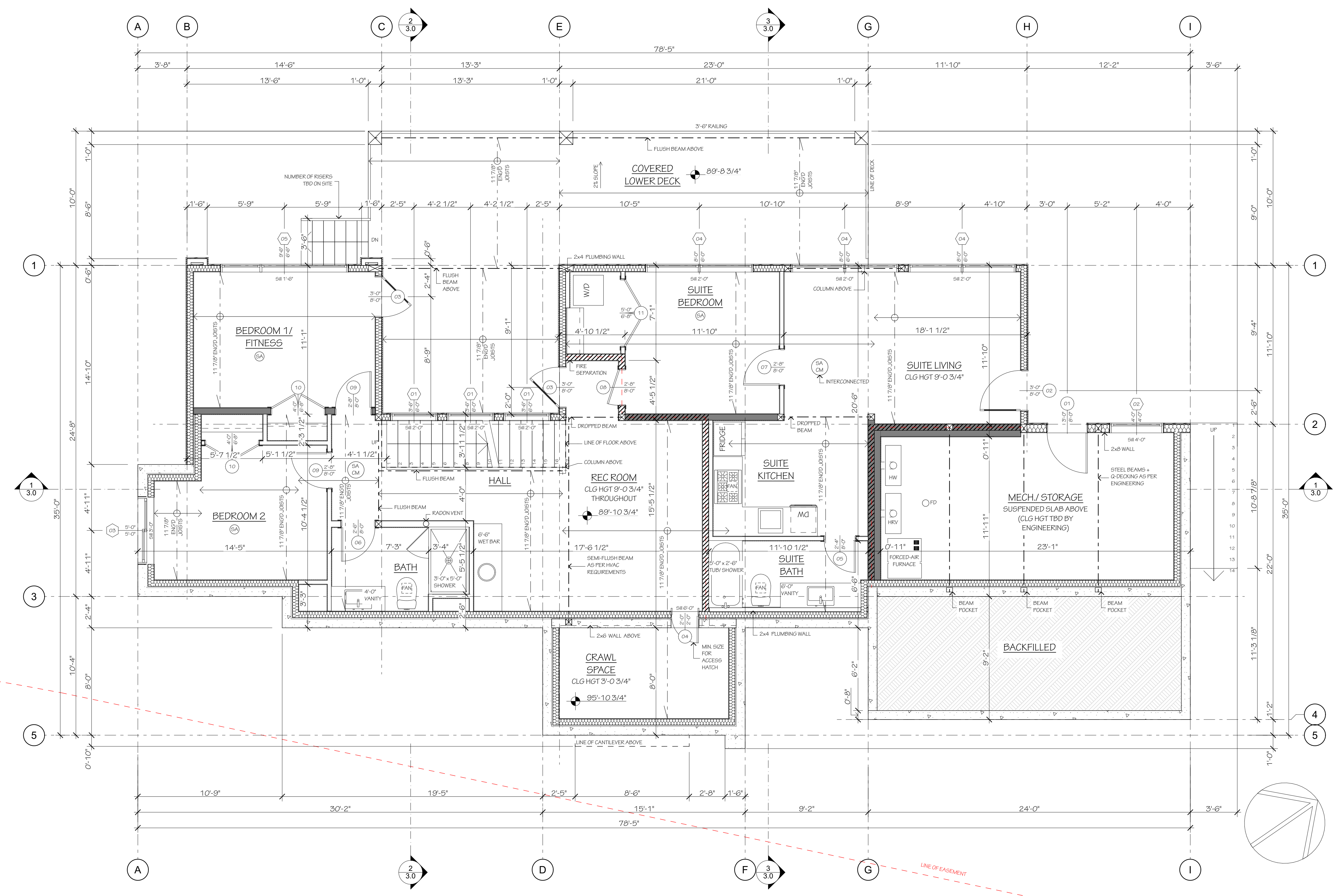


UPRISE DESIGN + DRAFTING INC.
LAKE COUNTRY, BC
PH: 778.480.0341

2505 KETTLE RIDGE WAY
SHEEHAN RESIDENCE
DATE: FEBRUARY 7, 2022
SCALE: AS NOTED



1 BASEMENT PLAN
SCALE: 1/4" = 1'-0"

BASEMENT TOTAL AREA: 1,521.2 sq ft
BASEMENT AREA: 929.6 sq ft
SUITE AREA: 591.6 sq ft
COVERED DECK AREA: 519.4 sq ft

NOTE: SECONDARY SUITE TO BE EQUIPPED WITH BASEBOARD HEATERS

WALL ASSEMBLIES

TYPICAL EXTERIOR WALL CLADDING WEATHER BARRIER 3/8" SHEATHING 2x6 STUD WALL R24 BATT INSULATION VAPOUR/AIR BARRIER 1/2" GYPSUM BOARD	FROST WALL 8" CONCRETE WALL 1" AIR SPACE 2x6 STUD WALL R24 BATT INSULATION VAPOUR/AIR BARRIER 1/2" GYPSUM BOARD	GARAGE WALL 1/2" GYPSUM 2x6 STUD WALL R24 BATT INSULATION AIR VAPOUR BARRIER 1/2" GYPSUM	STONE COLUMN FEATURE STONE WEATHER BARRIER 3/8" SHEATHING 2x6 STUD WALL	TYPICAL INTERIOR WALL 1/2" GYPSUM BOARD 2x4 STUD WALL 1/2" GYPSUM BOARD	2x6 WALL 1/2" GYPSUM BOARD 2x6 STUD WALL 1/2" GYPSUM BOARD	LOAD BEARING INTERIOR WALL 1/2" GYPSUM BOARD 2x6 STUD WALL 1/2" GYPSUM BOARD
---	---	---	---	--	---	---

SEPARATION ASSEMBLIES

45 MIN. FIRE RESISTANCE RATING CBC TABLE A-9.10.3.1.A CBC TABLE A-9.10.3.1.B	INTERIOR WALL BETWEEN MAIN DWELLING + SUITE (MS/WB) RESILIENT METAL CHANNEL SOUND ABSORBING MATERIAL (MIN. 150mm IN FLOORS) 1/2" GYPSUM BOARD	LOAD BEARING INTERIOR WALL BETWEEN MAIN DWELLING + SUITE (MS/WB) RESILIENT METAL CHANNEL 2x6 STUD WALL SOUND ABSORBING MATERIAL (MIN. 150mm IN FLOORS) 1/2" GYPSUM BOARD	SUITE CEILING (S/F/FR) STC-53 NC-47 FINISHED FLOORING 5/8" PLYWOOD SUBFLOOR 11 7/8" LI (g max 24" O.C.) SOUND ABSORBING MATERIAL (MIN. 150mm) RESILIENT METAL CHANNEL (g 24" O.C.) AIR BARRIER 2 PLY 1/2" TYPE X GYPSUM BOARD
--	--	--	--

SUITE REQUIRES BASEBOARD HEATING AND INTERCONNECTED SMOKE ALARM

- GENERAL NOTES**
- ALL PLANS AND DIMENSIONS MUST BE REVIEWED BY CONTRACTOR BEFORE CONSTRUCTION AND MUST VERIFY ANY DISCREPANCIES BETWEEN THE DRAWING AND EXISTING CONDITIONS PRIOR TO WORK BEING DONE.
 - CONTRACTOR MUST COMPLY WITH ALL CURRENT BUILDING CODES, BY-LAWS AND REGULATIONS.
 - THESE PLANS ARE FOR A SINGLE PROJECT AND THE COPYRIGHT BELONGS TO UPRISE DESIGN + DRAFTING INC. THE DESIGN MUST NOT BE COPIED AND THESE DRAWINGS MUST NOT BE DUPLICATED BY ANY PERSONS.

REVISIONS

#	DATE	DESCRIPTION
3	02/07/2022	- CHANGED POSITION OF HOUSE ON LOT
2	10/13/2021	- ADDED SUSP. SLAB UNDER GARAGE - CHANGED MECH RM TO CRAWL SPACE - ADJUSTED FRONT ENTRY STEPS - UPDATED DETAILS AS PER STEP 3 ENERGY CODE
1	05/18/2021	ISSUED FOR BUILDING PERMIT

BASEMENT PLAN