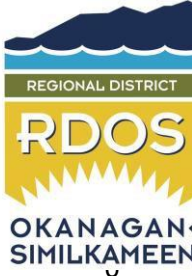




# Naramata Bear Smart Application 2013

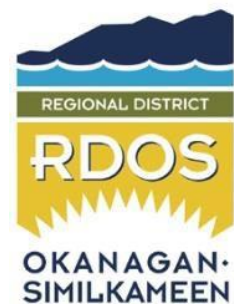
---

Regional District Okanagan Similkameen



## Table of Contents

<b>Message from Electoral Area E Director .....</b>	<b>2</b>
<b>Executive Summary.....</b>	<b>3</b>
<b>1.0 Summary of Criteria #1 - Prepare a Bear Hazard Assessment .....</b>	<b>5</b>
1.1 Community – Current Situation .....	5
Map 1. Magnified map of Naramata Village .....	6
1.2 Statistics .....	7
Demographics - Statistics .....	7
<b>2.0 Summary of Criteria #2 - Human Bear Conflict Management Plan .....</b>	<b>8</b>
2.1 Strategies to resolve bear hazards.....	8
<b>3.0 Summary of Criteria #3- Revise Planning and Decision Making .....</b>	<b>11</b>
<b>4.0 Summary of Criteria #4 - Implement Continuing Education .....</b>	<b>12</b>
<b>5.0 Summary of Criteria #5 - Develop and Maintain a Bear Proof SWM System .....</b>	<b>13</b>
<b>6.0 Summary of Criteria #6 - Implement Bear Smart Bylaws: .....</b>	<b>14</b>
<b>BACC Final Comments .....</b>	<b>15</b>
<b>Appendix 1-4 .....</b>	<b>16</b>
Appendix 1 – Excerpt from Bear Hazard Assessment and Bear Conflict Management Plan Recommendations .....	16
Appendix 2 – Information provided to developers, new homeowners and Contractors.....	20
Appendix 3 – Curbside Garbage Violation Letter.....	25
Appendix 4 – Letters of Support .....	26



## Message from Electoral Area E Director

Since the implementation of our curbside garbage bylaw and Bear Aware status for Naramata, we have seen a large decrease in the number of human-bear encounters and the subsequent destruction of bears. Bear Smart status will allow for a continued focus on enforcement of our bylaw and will create a reduction in bear attractants in the community through the placement of additional bear proof garbage bins and continued community education.

I support the efforts of our Bear Aware Coordinator Ms. Zoe Kirk, local Conservation Officers and the citizens of Naramata with their combined efforts to reduce human-bear conflicts, thus increasing the safety of our residents and allowing wildlife to remain wild.

Karla Kozakevich

Area E Director – Naramata



## Executive Summary

### **Naramata:**

Naramata resides within Electoral Area E in the Regional District Okanagan Similkameen (RDOS). The most densely populated zone is nestled between Baerg Creek to the north and Arawana Creek to the south, on the south eastern shores of Lake Okanagan. The community covers approximately 886.2 hectares (8.86 sq. km) with two fish bearing creeks that dissect the main service area. Naramata Creek originating above the KVR railway meanders through the village of Naramata emptying into Lake Okanagan. Kokanee salmon use three local creeks and a portion of the eastern beaches of Lake Okanagan for spawning.

Above Naramata running approximately North/South is the Kettle Valley Railway (KVR) Trail now a part of the Trans Canada Trail Network. The KVR borders and dissects some populated areas, for much of the time parallels Naramata Road, the main and only road in and out of the small hamlet.

Naramata boasts a diverse mix of geography. The agricultural sector utilizes natural features of the landscape and exploits the rich glacial till soil for cultivating a mix of tree fruits (hard and soft), wine grapes, vegetables, gentleman farms (with a few cows or sheep), and horse properties. The agricultural footprint is approximately 20.2 % (179.4 hectares) of the available land. Crops are growing or in production between February and November, with the exception of ice wine grapes which may stay on the vines past year's end. Producers are widely scattered throughout the Naramata area; map #2 Naramata Bear Hazard Assessment (Z. Kirk 2013)

Naramata has been traditionally referred to as a bear 'hot spot' by local authorities. From 2006 to 2009 an average of 6-7 bears per year were destroyed. Potential contributors for the high destruction rate include: increase of bear population, habitat challenges, poor berry crops in the upper regions and human development into interface zones. The 2003 Okanagan Mountain Fire (which came within 10 km of Naramata) may have altered the available range and natural forage for bears. Once pushed into the periphery of the populated area, a readily available bounty of fruit, grapes, garbage and other attractants provided a draw to the community and a reason to loiter.

In 2009 the Bear Aware Program was implemented by then Area Director Tom Chapman. A Bear Hazard Assessment and Bear Conflict Management Plan for the entire RDOS had been contracted and ready to be ratified formally by the RDOS Board. Bear Conflict Management strategies were prioritized and a Bear Aware component was integrated into the overall RDOS Solid Waste Management Plan. Links below

**Board Presentation** to outline Solid Waste Management Plan Review:

[http://www.rdosmaps.bc.ca/min\\_bylaws/ES/solid\\_waste/SWMP/TAC\\_presentation\\_Mtg\\_3.pdf](http://www.rdosmaps.bc.ca/min_bylaws/ES/solid_waste/SWMP/TAC_presentation_Mtg_3.pdf)

Starting in 2009, Bear Aware has been active throughout the RDOS. For the first two seasons, the Bear Aware Community Coordinator concentrated on Naramata, and the resulting success has provided a 'model' community for expansion of the program and Bylaws to other parts of the region. In Naramata, the implementation of the Bear Aware program and new Curbside Garbage Bylaw has proven beneficial. Only one unthrifty young bear has been destroyed by CO Service since 2009. In the short few years tremendous progress has been realized. Community support and citizen's actions (behavior modification and neighbours teaching neighbours) is a major contributor to its success. It is a logical step in the evolution of



the community to apply for Bear Smart status. An engaged community, Naramata is committed to reducing human-bear conflict. Working together with the CO Service, WildSafeBC, and the RDOS, Naramata residents and visitors are learning to co-exist with wildlife while living, working and playing in bear country.

***Note: Throughout this application Bear Aware™ will be used interchangeably with WildSafeBC™ the new name for the program***

■

The Village core: The Museum, the General Store, Motels, Paddle Shop, Café, and clothing store



## 1.0 Summary of Criteria #1 - Prepare a Bear Hazard Assessment

A Region-wide Bear Hazard Assessment and Bear Conflict Management Plan was produced for the Regional District, including Naramata. These were undertaken and completed in 2010/11

**Link to both the Master Bear Hazard Assessment (BHA) and Bear Conflict Management Plan:**

[http://www.rdosmaps.bc.ca/min\\_bylaws/PublicWorks/WildSafeBC/AppendixTwoConflictMgmtPlanFinal2010.pdf](http://www.rdosmaps.bc.ca/min_bylaws/PublicWorks/WildSafeBC/AppendixTwoConflictMgmtPlanFinal2010.pdf)

[http://www.rdosmaps.bc.ca/min\\_bylaws/PublicWorks/WildSafeBC/Hazard\\_Assessment\\_Plan\\_May\\_24\\_with\\_maps.pdf](http://www.rdosmaps.bc.ca/min_bylaws/PublicWorks/WildSafeBC/Hazard_Assessment_Plan_May_24_with_maps.pdf)

**Note:** pages 43 and 55 in the BHA have maps illustrating CO service calls, attractants, seasonal variability and areas of concern (as of 2009). The Naramata BHP BMP provided by WildSafeBC Coordinator echoes these findings, with slight variation. These address both Criteria #1 and 2

**FTP site for Naramata Specific Bear Hazard Assessment and Bear Conflict Management Plan:**

[http://www.rdosmaps.bc.ca/min\\_bylaws/PublicWorks/WildSafeBC/NaramataBearHazardAssessment.pdf](http://www.rdosmaps.bc.ca/min_bylaws/PublicWorks/WildSafeBC/NaramataBearHazardAssessment.pdf)

[http://www.rdosmaps.bc.ca/min\\_bylaws/PublicWorks/WildSafeBC/NaramataBearMgmtPlan2013.pdf](http://www.rdosmaps.bc.ca/min_bylaws/PublicWorks/WildSafeBC/NaramataBearMgmtPlan2013.pdf)

### 1.1 Community – Current Situation

The Region-wide Bear Hazard Assessment and Conflict Management Plan have provided the framework for this Naramata specific BHA and BCMP.

The Bear Aware Community Coordinator completed a Naramata specific addendum; a ‘mini’ Bear Hazard Assessment and Management Plan. These documents have been illustrated using maps – to provide the clearest overview of the community and the potential wildlife conflict issues. The maps progress from showing an overview of the community, human- bear populations then progressively drill down to show where attractants and hazards are located.

Currently, Naramata is enjoying reduced calls to the Conservation Officer Reporting Line and no bear conflict issues. Naramata is still home to a large number of bears, but the conflict situations have dropped significantly. At times, farmers have been known to take matters into their own hands and destroyed a nuisance bear. The current Bear Aware Community Coordinator lives in Naramata and has not heard of any farmers taking such action. A more concentrated number of bears return to the village and surrounding orchards each fall, as the Kokanee return to spawn in the creeks and the lakeshore on Mill Bay, just as fruit ripens on the trees. In the last few years, residents have been vigilant about attractants reducing the incidence of loitering bears.

The pictures illustrate Naramata’s only school, an Elementary school: K-5 with 65 children, located on Naramata Creek. The grounds house the well fenced community gardens, and note the decorative mosaics – one depicting bears fishing the creek.





Map 1. Magnified map of Naramata Village - illustrating commercial, residential



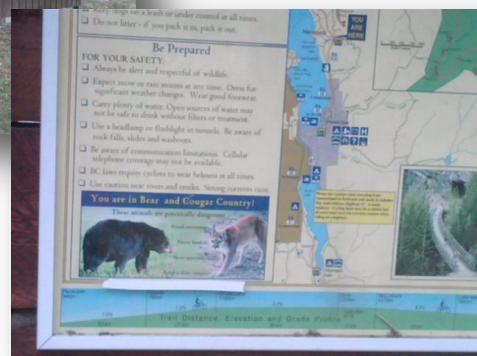
## 1.2 Statistics

### Demographics - Statistics

- Population: ~ 2050 swells to double the size during the summer season (July to September)
- Residential houses: 825
- Agricultural Properties: 192
  - Mix of tree fruits: apple, peach, apricot, pear, cherry
  - A handful of vegetable farmers
  - One certified Urban Farm – James Young
  - Two small berry operations
  - Mix of wine grape varieties and wineries
  - A small mix of horse, cattle, sheep and goats
- Commercial entities:
  - Restaurants: 4
  - Accommodation Hotel/Motel: 5 (excludes bed and breakfasts, vacation rentals, and seasonal pickers camps)
  - Multi-Denominational Conference Centre ( Naramata Centre)
  - Wineries: 13
  - Public Houses: 2
  - Shops/Services: 7
- Schools:
  - Naramata Elementary School - average of 60 – 80 students
- Parks:
  - Three, day-use parks – RDOS Manitou Park (with playground), RDOS Wharf Park, RDOS Creek Park
    - Several open green spaces and beach accesses with no names (Min of Transportation and Highways) being tended by RDOS



**Current signage & garbage can at KVR trail head on upper Smethurst Rd**





## 2.0 Summary of Criteria #2 - Human Bear Conflict Management Plan

### 2.1 Strategies to resolve bear hazards

Naramata has several traditional travel corridors and preferred routes for bears. This required(s) concentrated education and behavior modification by residents in those areas. Many have employed various strategies to mitigate bears accessing their properties; removing brush for sight lines, removal of identified attractants, utilizing BFI Bear proof carts, wildlife proof enclosures and some fencing.

In order of importance, priorities are being implemented from Section 8.0: Summary of Recommendations from the overall RDOS Bear Conflict Management Plan. **See Appendix 1** or pages 19-23 in BHA 2009

Costs to implement recommendations are being phased in over time. A regular line item in the Solid Waste Management Plan ensures a small regular budget of \$7500 yr. towards bear-human conflict management.

- RDOS Parks and Recreation have allocated dollars in their 2014 budgets to begin replacement and retrofit the waste receptacles in the region's parks
- RDOS Community Services budgets under review for upgraded signage on both the Trans Canada Trail portion that runs through Naramata (and beyond) in partnership with the Province
- Local signage has been designated under the WildSafeBC expenses budget
- Bylaw and OCP amendments require RDOS Board approval, but no additional budget dollar allocation
- Bylaw education materials and guidelines will be part of the regular departmental staff time and salary requiring no formal budget allocation
- While partnering with WildSafeBC, researching and applying for program funding grants is not favoured. However, to apply for signage or small infrastructure grants (through community organizations) is being pursued
- Removal of orphan trees and roadside attractants to be discussed with Min of Hwys. and integrated into their annual roads maintenance budgets, through ARGO Road Maintenance

As the community becomes more educated and aware, the landscape is changing. Orphan fruit trees are being removed voluntarily, and trees on road allowance are being brought to the attention of the WildSafeBC Coordinator. Currently, a strategy to remove roadside cultivar trees is being developed.

Bear Smart Committee: Naramata has been a pilot and role model for the RDOS for several human-bear conflict reduction projects. The successes of the Bear Aware (now WildSafeBC) program in Naramata have been used as an example and to expand curbside Bylaws to other electoral areas in the region. It has proven effective (to date) to work without an official Bear Smart Committee, but rather to hold meetings with stakeholders as the need arose.

This may change as Naramata achieves Bear Smart Status and conditions to maintain that status needs a working group to insure steps are achieved and Bear Smart is also broadened out to other communities within the RDOS.

## Naramata Bear Smart Application 2013

Naramata BearSmart -Appendix 2

### Criteria #2 Action Items

Section	Action Item	Started	Completed	Ongoing	Exp Date	Notes
Ref#	<b>RDOS Action Items - In House</b>					
1	<b>RDOS SWMP Review</b>	2009	2010			provides framework and action items from Bear Conflict Management Plan included in the new SWMP
1	<b>RDOS Bear Hazard Assessment</b>	2007	2009			
2	<b>RDOS Bear Conflict Management Plan</b>	2007	2010			
4	<b>Bear Aware Coordinator</b>	2010		X		This addresses high priority #1 & 2 BCMP 2009
	provide imbedded ongoing funding for a BACC			X		This addresses High priority # 7 & 8 BCMP 2009
5	<b>Naramata Curbside Bylaw</b>	2010	2011			This addresses high priority # 2 & 3 BCMP 2009
1	<b>Naramata Bear Hazard Assessment</b>	2012	2013			
2	Naramata Specific Conflict Management Checklist	2012		X	2014	The items actioned are both linked from the overall RDOS CMP and a more detailed identified list for the community
5	<b>Parks Wildlife resistant containers</b>					
	Wharf			X	2014	Increase to pick up late every afternoon - until budget cycle in 2014 allows for purchase and installation of approved receptacles
	Manitou			X	2014	Increase to pick up late every afternoon - until budget cycle in 2014 allows for purchase and installation of approved receptacles
	Creek Park		X			standard concrete base angled receptacle
3	<b>Revise Planning &amp; Decision Making</b>					The following addresss High Priority # 5 BCMP 2009
	Environmentally Sensitive Habitat Development			X		Applications to develop mult-unit or commercial entities in these zones trigger a QEP
	Development Permit Area amendment	2013		X	2014	being developed now, and until inclusion into OCP, best practices information provided to developers
	Building Permit amendment	2013		X	2014	being developed now, and until inclusion into OCP, best practices information provided to developers, contractors property owners
	Form and Character (Town Site Dev Permit)	2013		X	2014	being developed now, and until inclusion into OCP, best practices information provided to developers
6	<b>Implement Bear Smart Bylaws</b>	2013		X	2014	Working on a second stage - Behind the hedge Bylaw - proposed for first board review October 2013
4	<b>Living With Wildlife Guides</b>	2013	2013			Partnership with OSCA and AEF grant funding to write and distribute best practices guides for agriculture BCMP Moderate Priority # 1 & 2
5	<b>Implement Bear proof SWMSystem</b>		2012			
	provide access to bear proof containers			X		Addresses High Priority # 4 BCMP 2009
4	<b>Signage</b>					
	KVR trail			X	2013	bear information currently at Smethurst, review to upgrade underway; along trail at start and end of Area E
	Parks				2014	all three, bear aware and status signs
	Community Gardens				2013	composting in bear country
	Entrance to Naramata (and Village Centre)				2014	if Bear Smart Status is received, sigange to be erected
	Library				2013	bear smart objectives

Criteria #2 Action Items

Step	Action Item	Started	Completed	Ongoing	Exp Date	Notes
Ref#	Community Action Items					
4	Continue to upgrade information					provided to welcome to Naramata packages, Vacation Rentals and Accommodations
4	Community garbage receptacles					
	Naramata Centre	2010	2012			very engaged in attractant management and visitor education
	Naramata School	2007	2009			very engaged in attractant management and student education
4	Restaurants garbage management					
	Camp Creek Station Pub			X		Dumpster labelled with Bear Smart occassionally left open (pub now closed and for sale)
	Cafe Nevermatters		2012			Dumpster well contained, garbage cans emptied daily
	China Beach			X		Dumpster well contained, garbage cans emptied daily
	Naramata Heritage Inn		2012			Dumpster well contained, garbage cans emptied daily
2	Naramata Bear Smart Committee	2013		X	2014	local association members: NCA, Parks and Rec, and BACC,CO (if and when required)



### 3.0 Summary of Criteria #3- Revise Planning and Decision Making

#### **Background:**

The RDOS has eight Electoral areas. The RDOS is systematically working with communities in the region to develop or review Official Community Plans (OCPs) in a phased manner; six of the eight areas are now under review or being considered for OCPs. As new OCPs are undertaken or reviewed, Bear Smart Bylaws and guidelines will be brought forward for consideration and inclusion.

#### **Naramata Specific:**

The Electoral Area E OCP was adopted in 2006 with repeal and re-enactments ratified in 2008. Therefore, with pressure to develop and implement other OCPs, Electoral Area E Rural Naramata OCP is not due for review for the next few years.

Development applications for subdivisions or multi-unit residential buildings in these zones, trigger a QEP (a qualified Environmental Planning report). Wildlife habitat and Bear Smart principles will be taken into consideration upon submission of reports.

Proposed changes to the Electoral Area E Rural Naramata Official Community Plan (OCP) **Town site Development Permit Area** will be reviewed and amended in 2014. Policies will be included to address the provisioning of wildlife proof waste containment. This will be a part of a project to review the ‘forms and character’ guidelines within the Development Permit Area for multi-unit and commercial developments.

At this writing it is proposed that in the **Building Permit Package and Process**, (which is primarily for single family construction) educational information will be inserted into the package provided prospective home builders. This information will be made available as ‘Best Practices Information’ until fully adopted into the OCP. **Examples in Appendix 3**

#### **Region-wide considerations:**

In the future, zoning changes may be one of the most effective routes to achieve the broadest reach for Bear Smart objectives. As zoning Bylaws and changes are challenged, reviewed and revised, they can be amended to be consistent with Bear Smart objectives and align with the overall RDOS Conflict Management Plan



The RDOS web site has devoted a section to Wildlife; bears specifically, and tab links to all the aspects of living with wildlife. Included in this section will be links to Development Services guidelines for developing in bear-human interface zones.

A draft RDOS trails standards is being developed, to contain a section on bear habitat, wildlife corridor considerations and guidelines to reduce the potential for human – bear conflict. This is expected to be complete and adopted by early 2014

## 4.0 Summary of Criteria #4 - Implement Continuing Education

The objective of the Bear Aware program is to reduce human-bear conflict through education cooperation and innovation. The RDOS has intention to becoming a Bear Smart region; starting first with Naramata. The RDOS has committed to ongoing funding for the Bear Aware program (WildSafeBC) since 2010.

Over the past three years, Bear Aware Community Coordinator (BACC), Ms. Zoë Kirk has been actively working in the community to raise awareness. Presenting program objectives through annual or bi-annual school presentations, Naramata Farmer's Market booths, radio and television interviews, regular submissions to the popular community web site [www.Mynaramata.com](http://www.Mynaramata.com), door-to-door canvassing in hot spots, garbage patrols, tagging garbage placed at the curb early. Recently, these actions were augmented with letters sent to owners of properties where garbage was observed out to the curb early or unmanaged (photographed and documented). The BACC also uses signboards when bears are active. The BACC is available by phone or email to residents concerned about wildlife issues.

The BACC is a high profile, well known member of the Naramata community. With the new WildSafeBC Community Coordinator designation, the BACC has a broader base of information to present and more ways to keep the community engaged.

Continuing Bear Smart education objectives include:

- Wildlife related signage at the community gardens; composting in bear country (best practices)
- Two **Bear Smart** signs at each end of the community
- More in depth modules for Elementary school presentations
  - 'Protect our wildlife' banners for Robinson Ave – specific to **Naramata Bear Smart**
  - Library modules; bear and wildlife biology, plus fun and interactive learning sessions
  - Fruit gleaning
  - Field trips for students, parents and interested public – “Looking through the eyes of bears” as they move through our community
- Providing local agriculture with best practices guides for bears and other wildlife – now available for download at [www.osca.org](http://www.osca.org), [www.rdos.bc.ca/wildsafeBC-BearAware](http://www.rdos.bc.ca/wildsafeBC-BearAware)
- Continuing to encourage and expand the use of wildlife resistant garbage carts and wildlife proof enclosures by residents; especially vacation rentals, seasonal home owners, and to new developments and new single family construction
- Continuing to provide attractant management and WildSafeBC outreach information to visitors, campers, and transient workers



## 5.0 Summary of Criteria #5 - Develop and Maintain a Bear Proof SWM System

The RDOS reviewed and updated its Solid Waste Management Plan, adopted 2012 links below.

The RDOS Campbell Mtn. landfill (15 km. from Naramata) is already electrified and many changes have been made to reduce wildlife conflict throughout all processes of solid waste management. This has been very effective in reducing bear activity in and around the landfill, as well as on neighbouring properties.

Naramata was chosen as a Bear Aware - Pilot Model community. The Curbside Bylaw amendment was phased in over a year and has been in effect for 2.5 years. The results have been exceptional. Historically, Naramata destroyed 6-7 bears per year. From October 2010 to November 2013 only one very unthrifty bear and one nuisance bear have been destroyed.



### Milestones:

1. The Bear aware program was re-invigorated in 2010 and education to residents became a major focus.
2. A Curbside Garbage Bylaw amendment was introduced as a 'Pilot' – with a long grace period - January 30<sup>th</sup> to July 1<sup>st</sup> 2011. The amendment required that residents place out refuse after 5 am on the day of collection, in a dangerous wildlife resistant container or a dangerous wildlife proof enclosure. The Bylaw became effective on July 1<sup>st</sup> 2011.
3. Working with BFI, RDOS Solid Waste Coordinator, Cameron Baughen negotiated a change to the day of garbage pick-up; from Tuesday to Monday<sup>1</sup>. This was significant and more in line with Bear Smart objectives and community needs.
4. Garbage audits concluded that prior to the active Bear Aware Program and Curbside Bylaw that up to 59 of 825 residences placed garbage out early. After the program and Bylaw were implemented that number declined to near zero for the first few 12 months and now fluctuates between 5 and a high of 9. Warning letters are sent to homeowners when periodic garbage audits are conducted. Very few repeat offenders are tagged.
5. The RDOS and Waste Management Contractor – Progressive Waste Services (BFI) entered into a joint partnership launching the Naramata 'Bear-proof garbage cart pilot program'. This allowed residents to be introduced to the Bylaw, and test a BearSaver™ cart free for three months. Areas of focus were properties that had ongoing conflict issues and those on known bear corridors. Carts continue to be available by rent by residents. There are approximately 57 of 85 carts still actively being used, and more are being added over time.

### Bylaw: [Municipal Ticket System](#), [Solid Waste Collection](#).

Curbside collection information:

<http://www.rdos.bc.ca/departments/public-works/solid-waste/curbside-garbage-recycling/program-information/>

Curbside Bylaw: [http://www.rdosmaps.bc.ca/min\\_bylaws/bylaws/engineering/2012/BL2191.10.pdf](http://www.rdosmaps.bc.ca/min_bylaws/bylaws/engineering/2012/BL2191.10.pdf)

1. *The population of about 2200 swell with the onset of summer. Many visitors leave on Sundays and are requested to place refuse to the curb when they leave. This makes Monday a much better option. Visitors and vacation rentals have been urged to supply both laminated Bylaws and bear specific information, and to rent or provide bear proof carts. This is showing to be very successful.*



## 6.0 Summary of Criteria #6 - Implement Bear Smart Bylaws:

The RDOS has been actively modifying processes and procedures to reduce the potential of human-bear conflict. The SWMP now in effect, RDOS Solid Waste Management staff look at operations through the lens of the Bear Conflict Management Plan when making decisions and planning for the future. RDOS Solid Waste Management staff research other Bear Smart communities and Districts when looking to amend or enact a new Bylaw. Hence the Curbside Bylaw(s) is written with the same intention as Whistler and Squamish.

### In effect:

- Expansion of Curbside Bylaw 2191.2010 to two additional Rural Electoral Areas: D and F. These areas have current or past bear conflict issues and the Bylaw has significantly reduced conflict. The same Curbside Bylaw was superimposed over the additional Electoral Areas.
- Violation Letter to support garbage tagging; referring to Bylaw infraction and the incidence of Bear-human conflict. If a resident refuses to comply or creates an unsafe environment, the Conservation Officer Service is called for support. To date no tickets have been required **See Appendix 2**
- Planning and Development Bear Smart Bylaws are being written through research and the new regional Biodiversity Strategy – Keeping Nature in our Future (B.White 2012)
- Regular communication and consultation with the local Conservation Officer Service; and outside agencies (ad hoc Bear Smart Committee) as required when considering Bylaw amendments
- Inclusion of the WildSafeBC Coordinator in RDOS department meetings when specifically dealing with current or potential wildlife issues



### Tasks to be completed: by 2014

Inclusion of Bear Smart Bylaws and objectives to:

- Implement Development Permit amendments
- Implement Development Checklist amendments (fall 2013)
- Include in Building Permit Package Best Practices educational material to reduce human-bear and human-wildlife conflict **See Appendix 3**
- Include in Special Event Permit package an educational pamphlet; best practices for wildlife-human conflict reduction **Same as above**
- Develop and implement RDOS Parks and Recreation - Trails Best Practices amendments
- To draft and formalize a broader reaching Wildlife Attractants Bylaw to address the provision of attractants to wildlife (bears) through irresponsible management of attractants on or around a property or premises; a 'behind the hedge Bylaw' - Researched and drafted by Solid Waste Management Coordinator Cameron Baughen
- Look for a partnership within the Region to build wildlife resistant containers for residents who prefer to have that type of containment at curbside.

## BACC Final Comments

Many of the criteria and sub-set requirements for Bear Smart Status have been implemented in the Naramata community (by residents themselves), without formal 'projects' or Bylaw directives.

It is gratifying to forensically document what has already been accomplished or is happening in the community and the relatively few action items remaining. The Section Three: Planning area is the area requiring the most focus from this point forward. Outstanding items are now mostly 'catch-up' legislative changes; to harden into long range land-use planning and zoning the respect and consideration for wildlife, wildlife habitat and corridor protection. These are not in themselves costly, but take staff resources to ready reports and present at the Board level for ratifying and implementation. These items will be amended in due course, as the RDOS updates OCPs and works to incorporate Bear Smart requirements and recommendations as well as priorities from: the master BHA, BCMP, SWMP, the Regional Growth Strategy and the new Biodiversity Strategy: "Keeping Nature in our Future" documents.

This application would not be possible without the unwavering support and assistance from many dedicated individuals and agencies. The RDOS Solid Waste and Public Works management and staff, Electoral Area E Director(s) Karla Kozakevich and (prior Director ) Tom Chapman, BCCF/WildSafeBC; Regional Manager, Barb Waters and Provincial Coordinator, Frank Ritcey. Penticton Conservation Officer Service officers and staff, Bryn White of the South Okanagan Similkameen Conservation Program (Bear Smart Advocate), and the Ministry of Environment. Special gratitude to Don Hamilton Solid Waste Facilities Coordinator and Cameron Baughen Solid Waste Coordinator at the RDOS for allowing the WildSafeBC Coordinator the latitude to 'run with the program,' keep pushing the envelope, and to reach for Bear Smart Status. Also, a deep and sincere appreciation to the CO Service - Inspector Barbara Leslie, Sgt. Jim Beck, Josh Lockwood, Mike Stern and Bob Hamilton for their patience, support, and learned guidance.

Respectfully Submitted,

Ms. Zoe Kirk  
RDOS WildSafeBC Community Coordinator  
Penticton, BC



## Appendix 1- 4

### Appendix 1 – Excerpt from Bear Hazard Assessment and Bear Conflict Management Plan Recommendations

EXCERPT FROM BHA & BCMP

## APPENDIX 1

**Recommendation:** Low Priority: Maintain linkage with the current review of the Wildlife Act and encourage changes that support local Bear Smart Project.

### 8.0 Summary of Recommendations: As they affect Naramata Bear Smart Application High Priority

1. **Recommendation:** Encourage change in local residents approach to management of fruit, garbage and other attractants by developing educational materials that address priority themes. **Complete**
2. **Recommendation:** Evaluate current waste management approaches in local communities/RDOS areas and opportunities for improved attractant management. **SWMP Complete**
3. **Recommendation:** Where appropriate, implement bylaws to manage garbage and other attractants **Bylaw in Place July 1, 2011**
4. **Recommendation:** To reduce human bear conflicts associated with garbage, implement a program to make bear proof containers available to local residents. Focus on interface areas **free trial and ongoing availability of bear resistant containers**
5. **Recommendation:** Draft protocols for new development for regional district and other interested local governments. These protocols would integrate the requirements for Bear smart practices into development permits and other tools. These protocols would focus particularly on interface areas with a history of human-bear conflict. Protocols would address attractant management<sup>12</sup>. **Ongoing Naramata Pilot Model**
6. **Recommendation:** Work with monitoring experts (For-ex; UBCO; Parks Canada), stakeholders and interested local governments to establish long term monitoring protocols. Monitoring would include: human-bear conflict tracking (bears trapped or destroyed), periodic detailed updates of conflict reports from COS (5 year intervals), annual reports of actions and results by education coordinator, annual tracking of progress related to HA and CM recommendations, periodic (5 year interval) review and revision of HA and CM reports, and other items as recommended by monitoring experts. **N/A for Naramata – stats supplied by CO service and WildSafeBC**
7. **Recommendation:** Develop a five year plan for funding the project. Cultivate a small subcommittee to develop strategy, determine priorities groups for funding requests, and write/administer grant applications. Ideally the subcommittee would include members with experience in profitable fund-raising. **Ongoing**

---

<sup>12</sup> This recommendation also links to strategies for implementing garbage attractant management, green space management etc. The intent is to define what planning vehicles to use and priority areas where these should be applied.



8. **Recommendation:** Review education coordinator role and assess options to obtain ongoing secure funding and consistency of approach for that role in support of implementation and monitoring initiatives. **o n g o i n g**
9. **Recommendation:** Establish a committee to implement the Bear Smart project. Committee membership should include representation from the following groups: local government, CO Service, technical experts in waste management, stakeholders (commercial fruit growers/vineyard managers), provincial government (MOE, MAL), conservation organizations (SOSCP), partner organizations as needed and others. Consider establishment of subcommittees to address Waste management, Commercial fruit and education initiatives as needed. **As required**

### Moderate Priority

1. **Recommendation:** Develop a website to support the education program and delivery of education materials. **Both RDOS and WildSafeBC web sites & RDOS Facebook and www.mynaramata.com**
2. **Recommendation:** In consultation with regional district, local communities, local experts and regional waste management committee, review current bear issues associated with existing landfills and define on priority basis measures required to make landfills bear proof. **Ongoing**
3. **Recommendation:** Where appropriate, implement planning requirements for new development to prevent development of bear human conflicts associated with garbage and other waste attractants. **Under development**
4. **Recommendation:** Work with interested local governments, owners, park users and other interested partners to develop and implement bear smart approaches to the management of existing green spaces (parks and public gathering places adjacent to areas frequented by bears) **RDOS drafting new policy**
5. **Recommendation:** Where appropriate, implement planning requirements for new greenspace areas to prevent development of bear human conflicts. **Being considered**
6. **Recommendation:** Provide opportunities for community input in setting Bear Smart program priorities and provide flexibility to adapt approaches to the needs and preferences of local communities<sup>13</sup>. **As required: Naramata model**

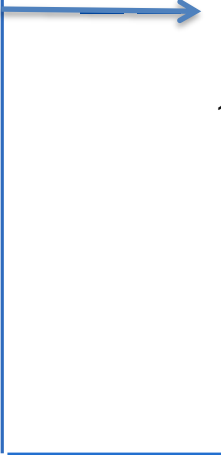
---

<sup>13</sup> This is a monitoring objective to be considered relative to implementation of other recommendations. Thus, the plan recommends the use of bearproof containers in some situations. Where these were proposed, the approach could incorporate community input related to changes to garbage management to reduce attractants.

7. Recommendation: Encourage leadership in Bear Smart practices by regional district and interested local governments by developing and encouraging the adoption of protocols for management of attractants on city property (e.g. management of fruit trees and fruit, bear proof garbage containers etc.). **RDOS Community Services Actively engaged in this now**
8. Recommendation: Review options to integrate bear smart concepts into OCP, Okanagan-Shuswap LRMP, and other community planning initiatives (smart growth, interface management for MPB, fire, park plans, neighbourhood/site level plans, Regional District strategies, planning for Indian Reserves etc.) **Being developed and implemented**
9. Recommendation: Explore opportunities for partnerships and if possible implement Bear Smart management approaches through sterile Insect Release (SIR) program, local hunting clubs, organizations that support commercial fruit growers/vineyards/bee-keepers and other potential partners to be identified later. Priorities locations for action should be developed based on Human-bear conflict history and proximity to interface areas as well as other factors discussed in the Hazard Assessment report. **Ongoing**
10. Recommendation: Work with local representatives of commercial fruit growers/vineyards to better define Human-bear conflict locations associated with commercial orchards. **Ag guides produced and available Nov 2013**
11. Recommendation: Work with regional and provincial Ministry of Environment staff and local hunters/hunter organizations to review and as necessary revise current programs to encourage hunting of problem bears/bears in problem areas. Consider opportunities to integrate Landowner Incentive Program (co-ordinator) into Bear Smart program. **Included under WildSafeBC**
12. Recommendation: Pilot development of commercial fruit tree/ orchard/ vineyard fencing as part of approaches to address grower issues with human-bear conflicts. Explore option to partner with Hawthorne Mtn, Paradise Valley Ranch and Summerland Agriculture Research Station to establish pre and post economic losses and cost/benefit associated with fencing. Request assistance from UBCO (Tom Sullivan) for data Collection. **Included under WildSafeBC**
13. Recommendation: Explore options for funding support for bear-proof commercial fencing with agencies like Ministry of Agriculture and Lands, Federal Ministry of Agriculture, and BC Agriculture Council as well as the Environmental Farm Program. **Environmental Farm Plan**

---

<sup>14</sup> Again this is a monitoring recommendation to be considered relative to implementation of other objectives. For example, implementing management of garbage attractants associated with new developments.



14. **Recommendation:** Implement site specific recommendations to address bees/honey attractants provided to address Conservation Officer priority areas (see table 2 in Hazard Assessment).

15. **Recommendation:** Address capacity to achieve moderate monitoring objectives (i.e. periodic updates of hazard assessment data such as bear relocations or destructions each year, and total yearly bear calls and changes in knowledge, awareness, skills, and behavior in the public sector (see table 1 and appendix 2); occasional map updates with several recent years of bear call data might also be useful (perhaps 2 years every 10 years). **For Naramata – it is part of WildSafeBC Coordinator's role**

**Orchard Pollination is temporary each spring. Resident colonies are mapped and new apiaries reported to WildSafeBC Coordinator**

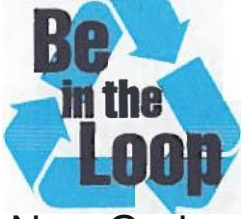
#### **Low Priority**

1. **Recommendation:** Seek opportunities to improve data on bear destructions/relocations. Consider gathering additional annual data from local RCMP, Ministry of Environment, Ministry of Highway(maintenance contractors) and other applicable sources. **Provincial WildSafeBC working on this**
2. **Recommendation:** Update bear habitat modeling when TEM mapping for missing parts of study area is available. Consider how attractants in developed areas could be incorporated into the habitat model.
3. **Recommendation:** As new scientific data on climate change, Mountain Pine Beetle and other landscape disturbances become available, consider the implications and incorporate appropriate changes into the management approach to bears. **MoE to supply data to RDOS**
4. **Recommendation:** Review options with MOE, Conservation Officer Service, Ministry of Highways and other interested stakeholders (local hunting clubs/BCWF) to coordinate and enhance collection of information about bear populations to support the bear smart project. This could include: enhanced mortality information, approaches to integrate data collection, standardize approaches to collection of kill/dead animal locations.
5. **Recommendation:** Maintain linkage with the current review of the WildlifeAct and encourage changes that support local Bear Smart Project. **Both 4 & 5 currently being explored by Provincial WildSafeBC Coordinator – Frank Ritcey**



Appendix 2 – Information provided to developers, new homeowners and Contractors

Appendix 2



# Being Bear Aware

Curbside Garbage Changes Electoral Areas 'D', 'E' and 'F'

November 2012

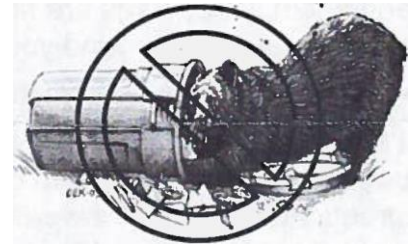
## New Garbage Rules Help Protect People and Bears

Residents in Area 'F' (West Bench, Red Wing) and Area 'D' (Kaleden, OK Falls, Twin Lakes) are now required to use one of three options while placing out garbage at the curbside:

- Place out your garbage on the day of collection after 5:00 am; or
- Build or buy a wildlife resistant enclosure; or
- Rent or buy a wildlife resistant container.

### Option 1-Place Out Garbage after 5:00am on Day of Collection

Residents can no longer place out garbage the night before collection unless it is protected in a bear proof container or bear proof enclosure. Residents that continue to place out unprotected garbage the night before could receive a \$100 fine per occurrence!



### Option 2-Build or Buy a Bear Resistant Garbage Enclosure

Garbage enclosures are small sheds at your property line, built to protect garbage and recycling until safely collected. Garbage enclosures can be bought from most building supply outlets, such as Home Hardware, or made at home using wood or concrete.

Contact the ADOS for designs and advice on building garbage enclosures.

When building a garbage enclosure at home use the following advise:

- Don't have any over hangs or mesh wire where bears can latch on and get leverage;
- Cover wooden seams with metal flashing and use screws not nails;
- Buy heavy duty handles or latches that can't be opened by bear claws;
- Make sure you can't get into the enclosure by lifting, tipping or prying it;
- Ensure waste can be removed by drivers;



Example 'TyeDee Bin' pre-made Garbage Enclosure



Home constructed Garbage Enclosure with metal seams and heavy duty handles



Example Bear Resistant Container with reinforced lockable top

### Option 3-Rent or Buy a Bear Resistant Containers

Bear resistant containers are specially designed toter carts with wheels. They must be reinforced with metal strips and a lockable top. Too heavy to lift by hand, these carts are collected with a mechanical lift on the side of the garbage truck. Not all containers are compatible with the lifting arm of the garbage truck. Residents should contact BFI Canada before purchasing a bear proof container. BFI Canada Rents bear carts to residents. Look on back for more information on the "Free Trial of Bear Proof Carts from BFI Canada."

*Page 2 continued on next page*

## Questions About New Curbside Pick-up Rules

### Why is protecting bears an issue?

The RDOS has a history of human-bear conflict resulting in Conservation Officers having to destroy problem bears. Bears are not generally aggressive but can become used to eating garbage, pet food, bird seed and tree fruit. You can make simple changes around your home to reduce bears becoming a nuisance or threat.



Cub with tub stuck on head  
unable to eat or drink

### Does putting out unprotected garbage the night before really make a difference?

**Yes.** Garbage left unprotected overnight attracts bears, dogs, raccoons, rats and other animals. Bears are habitual creatures and will remember how to obtain an easy meal, and return again and again. Once bags are ripped open or cans tipped over then birds and wind can spread the pungent garbage around your property.

### Have the new curbside garbage rules been working?

**Yes/** Since July 1st, 2011 Naramata (Area 'E') residents have been required not to place garbage out overnight. As a result, streets are tidier with fewer incidents of bear sightings or damaged property. An average of over 6 bears a year were killed in Naramata before 2011. Since the change only one unhealthy bear needed to be destroyed.



Information sticker on garbage can

### What will happen if I leave out garbage bags overnight?

Residents will receive several warnings before being fined \$100.

Repeat offenders may also be reported to the Conservation Officer Service which can levy additional fines. The ADOS will only fine people as a last resort. The goal of the program is to help residents break the habit of placing out waste unprotected overnight.

### Can my recycling bags also attract dangerous wildlife?

Recycling can attract animals especially if materials still contain traces of food waste. A bear's sense of smell is 5 times better than a dog's. Always clean your recyclables of all traces of food waste and place at the curb on the morning of collection.

## Free Trial of Bear Proof Carts from BFI Canada

This winter, residents can participate in a **two month free trial of bear proof bins**. This pilot will allow residents to try the carts to see if they are right for their property. If you like, the trail also includes carts for recycling and yard waste.

To register your property for the trail, or to get more information, please contact BFI Canada's Cart Hotline at 250-328-2778, and leave your contact information and address. The first 100 homes to register will get to participate in the trail. The bear bins rent for \$60/year, not available for purchase. For more information, please contact the BFI Cart Hotline at 250-328-2778.





## HUMAN-BEAR CONFLICTS

- Bears account for approximately 20,000 calls to the Conservation Officer Service reporting line every year.
- Garbage is the number one bear attractant cited when reporting a call.
- Relocation seldom works with bears. Individuals often return to their original home territory or become "problem" animals in other communities. In addition, translocated wildlife often fail to adapt to their new habitat and, as a result, may starve to death or be killed by those animals that already occupy the area.
- Bears that become highly food-conditioned and habituated to humans are often destroyed because of concerns for human safety.
- Early reporting of a bear in a neighbourhood helps us address the underlying issues before it becomes a problem.



British Columbia Conservation Foundation

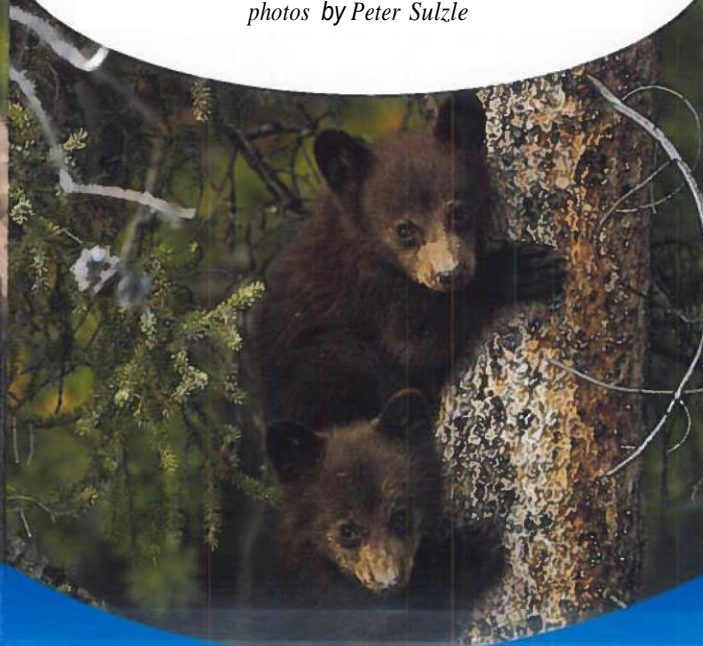


To report wildlife in conflict please contact the Conservation Officer Service reporting line at [1.877.952.7277](tel:1.877.952.7277)

Visit our website to learn how to keep wildlife wild and our communities safe.

[www.wildsafebc.com](http://www.wildsafebc.com)

*Version 1.0-2013  
photos by Peter Sulzle*



British Columbia Conservation Foundation



**Black bear**

*Ursus americanus*





## MANAGE YOUR ATTRACTANTS

If you manage the bear attractants around your house, worksite or campsite you can keep your family safe and keep bears from being destroyed. There are a number of things you can do:

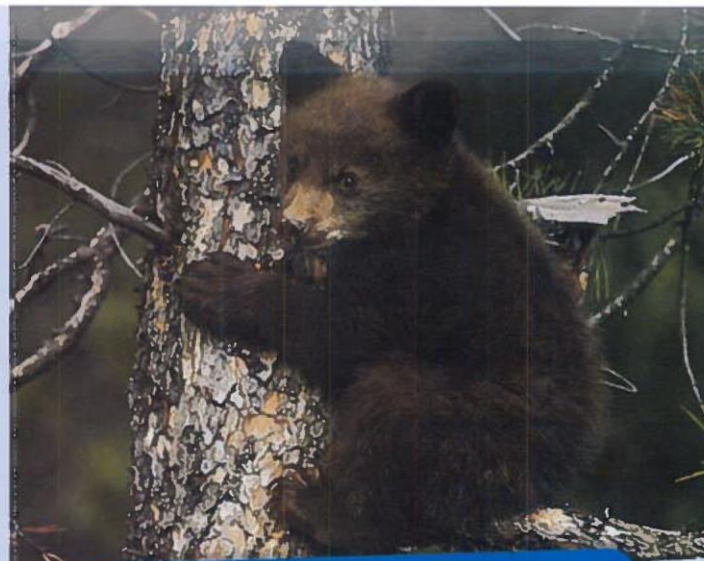
1. **Keep all garbage securely stored** until collection day. Placing garbage at the curb before collection day is poor behaviour and often illegal if your community has garbage bylaws in place.
2. **Manage your fruit trees and berry bushes** responsibly. Pick all fruit as it ripens and ensure that windfalls do not accumulate.
3. **Bird feeders often become bear-feeders**, so please - only feed birds during the winter months.
4. **Feed pets indoors**, or if fed out of doors, take in any feed that is not immediately eaten.
5. **Keep your barbecue clean** and free from odours. Bum off the grill everytime after use and clean out the grease traps.
6. **Manage your compost properly**. Composts should have equal amounts of brown and green materials added to reduce odours.
7. **If you keep chickens, bees or small livestock** use a properly installed and maintained electric fence. Store all your feed in a secure location and ensure feeding areas are clean and free of attractants.

### ! BEAR SAFETY TIPS

When hiking, travel in groups of two or more and keep talking (talk out loud to yourself if you are on your own). Bears recognize the human voice and will avoid you in most instances.

Carry bear spray with you when hiking in bear country. If you encounter a bear, do not yell, scream, or run as this may trigger an attack. If the bear sees you, speak in a low voice to let the bear know that you are a human and move away slowly.

If you have a bear in your yard, slowly retreat into the house and ensure that the home is secure. Call the Conservation Officer Service reporting line (1-877-952-7277) to report the bear. After the bear has left ensure that whatever attracted the bear is removed.



The black bear is the smallest of the three bears found in North America but none-the-less can grow to over 300 kilograms and is a surprisingly fast and agile hunter.

While called a black bear these animals come in a variety of colours – everything from the white Kermode bear through to their namesake black and most shades of brown in between.

Bears are **omnivorous animals** with vegetation making up about 80% of their diet and the remainder coming from things like small rodents, fish, insects, carrion (dead animals) and sometimes young deer, elk or moose. Bears have a **sense of smell far greater than that of dogs** and it is this sense of smell that helps them locate food at great distances. Bears are solitary animals that only congregate when there is an abundance of food. Female bears tend to their young for almost two years and can give birth to as many as five young although twins are more the norm.

Bears inhabit most ecosystems throughout BC and you should consider **the entire province to be "bear country."** While bear attacks are rare - they can be fatal. Carry bear spray with you, especially if hiking alone and take a course on bear safety.

## WHERE'S THE BEAR?

Visit our website at [www.wildsafebc.com](http://www.wildsafebc.com) to find a map that shows where bears have been sighted in your community along with information about what has attracted them into the area. By knowing where the bears are and what is bringing them in, we can all do our part to keep our wild life wild and our communities safe.

[www.wildsafebc.com](http://www.wildsafebc.com)



## BLACK BEAR FACTS:

- Adult males measure between 60-90 cm at shoulder height and weigh anywhere from 80-300 kilograms.
- Bears go into a deep sleep or denning period, usually from November through to April.
- Bears lose approximately 30% of their weight over the winter.
- Because bears need such great stores of fat to make it through the winter they are voracious eaters and can consume over 20,000 calories a day.
- Bears have an extremely good sense of smell and can smell food from over a kilometer away.
- Bears have eyesight and hearing as good as or better than that of humans.
- Bears are extremely fast and can run equally as well uphill or down.
- Bears mate in late June and embryos do not implant until the fall and only if the female has sufficient stores of fat to support the young through the nursing period in the den.

[www.wildsafebc.com](http://www.wildsafebc.com)

Appendix 3 -Curbside Garbage Violation Letter



RDOS File No- 536002 SIMILKAMEEH  
Improper Placement of Waste

Date

Dear

Re: Waste Placed at Curb That Can Attract Dangerous Wildlife

During a recent survey of Naramata by our WildSafeBC Community Coordinator, she saw that waste had been placed out the night before at your address. Enclosed are copies of the pictures taken along with the date they were taken.

Due to the need to protect residents from dangerous wildlife such as bears and cougars, the Regional District of Okanagan Similkameen Curbside Bylaw requires residents choose to:

- Place waste at the curb after 5:00am on the morning of pick-up,
- Use a dangerous wildlife resistant garbage cart, or
- Protect waste inside a dangerous wildlife resistant enclosure.

Sometimes it can be uncertain to which address garbage belongs. If this is not your refuse, please let us know. We understand that in extenuating circumstances, homeowners may be unable to place out materials in the morning of collection. In that event, RDOS Waste Contractor, BFI Canada offers wildlife resistant carts for lease, which conform to the Bylaw. These rolling 'bear cart' containers may be placed to the curbside early and satisfies the RDOS Bylaw requirements. BFI can be contacted at 250-490-3888. The RDOS can also provide details on how to build a dangerous wildlife resistant enclosure that can be placed at the bottom of your driveway to protect your waste from bears and cougars.

If you require clarification of this letter, or wish to discuss this further, please contact either myself, or RDOS WildSafeBC Community Coordinator, Zoe Kirk by e-mail at [zkirk@rdos.bc.ca](mailto:zkirk@rdos.bc.ca) by facsimile at 250-492-0063 or by telephone at 250-490-4110.

Sincerely,

Cameron Baughen  
RDOS Solid Waste Management Coordinator  
250-490-4203  
[cbaughen@rdos.bc.ca](mailto:cbaughen@rdos.bc.ca)

C:\SW management\BearAware2013

## Appendix 4 -Letters of Support

Date: August 30,2013

Re: Endorsement for RDOS/WildSafeBC Naramata Bear Smart Application

To:

Mr. Mike Badry RP Bio  
Ministry of Environment  
Wildlife Conflict Manager

This letter is in support of the Naramata Bear Smart Status application being submitted by the RDOS and WildSafeBC Community Coordinator, Ms. Zoe Kirk.

Over the past several years, steps taken by the RDOS, WildSafeBC (Bear Aware) and the community to reduce human-bear conflict have been well received by our community. Through curbside garbage Bylaw implementation, consistent and broad reaching community education, the level of awareness and understanding of bear behaviors and needs is much higher. The Coordinator has visited the elementary school on several occasions, and is accustomed to being seen at many of our local events. The community is more engaged; working to secure and reduce attractants, and reaping the benefits of reduced wildlife conflicts.

Bear Smart Status will keep the messaging front and centre, insure the importance of continuing to innovate and adapt as the community grows, and serve to keep wildlife wild and our community safe.

Sincerely,



Dennis Smith,  
Chairperson Naramata Parks and Recreation Commission





P. O. Box 146  
Naramata.B.C. VOH1NO

Peter Nielans, President  
Judi Harvey, Secretary 250-491-5423, Georgeen Janzen, Treasurer 250-496-5435

Visit our website at

Email:nea2@shaw.ca

---

Don Hamilton, Solid Waste Coordinator  
Regional District Okanagan Similkameen  
101 Martin St., Penticton, BC V2A 5J9

Feb. 25, 2013

Dear Don,

The Naramata Citizens Association (NCA) fully supports the RDOS application for the Bear Aware Program and its wage subsidy. The Bear Aware program has played an integral part in the education of the local community and its subsequent significant reduction in bear related incidents here. As a semi-rural community that prides itself on maintaining a safe and healthy ecosystem, integration with the natural community is paramount to all of us. The Bear Aware program and its ambassador have been instrumental in ensuring that any inadvertent interactions with the local bear population have been minimal and handled in a manner that preserves the rights and lifestyles of both parties wherever possible.

The NCA has worked with the Ambassador to reach out to the local community and educational system, and looks forward to continuing the relationship in the future. Promotion of such an important work is valued and prioritized within our organization.

The NCA can offer program in-kind support for promotion and information dissemination valued at a \$1000.

Sincerely,

A handwritten signature in black ink, appearing to read "J. Peter Neilans".

J. Peter Neilans  
President, Naramata Citizens Association



Date: August 30, 2013

Re: Endorsement for RDOS/WildSafeBC Naramata Bear Smart Application

To:

Mr. Mike Badry RPBio  
Ministry of Environment  
Wildlife Conflict Manager

This letter is in support of the Naramata Bear Smart Status application being submitted by the RDOS and WildSafeBC Community Coordinator, Ms. Zoe Kirk.

Over the past several years, the RDOS, WildSafeBC (Bear Aware) and the community have taken significant steps to reduce human-bear conflict in our community. Through curbside garbage Bylaw implementation and community education, the level of awareness and understanding of bear behaviors and their needs is much higher. The Coordinator attends many of our local events and the Elementary school. The community is becoming much more engaged, and working to secure and reduce attractants; reaping the benefits of reduced wildlife conflicts.

Bear Smart Status for Naramata will keep the messaging current and ongoing, insure the importance of continuing to innovate and adapt as the community grows, and serve to keep wildlife wild and our community safe.

Sincerely,



Dennis Smith,  
Chairperson Naramata Parks and Recreation Commission



July 16, 2013

Files: 230.20  
78560-40/BEA

Mr. Mike Badry, RP Bio  
Ministry of Environment  
Wildlife Conflict Manager  
1<sup>st</sup> Floor- 2975 Jutland Road  
Victoria BC V8T 5J9

Dear Mike:

Re. Endorsement for RDOS/WildSafeBC Naramata Bear Smart Application

The Okanagan Region of the Conservation Officer Service is in support of the Naramata Bear Smart Status application being submitted by the Regional District of Okanagan Similkameen and WildSafeBC Community Coordinator, Ms. Zoe Kirk.

Over the past several years, steps taken by the RDOS, WildSafeBC (Bear Aware) and the community to reduce human-bear conflict issues have been well received by our community. Through curbside garbage Bylaw implementation and consistent and broad reaching community education, the level of awareness and understanding of bear behaviors and needs is much higher. The community is more engaged; working to secure and reduce attractants, and reaping the benefits of reduced wildlife conflicts.

Bear Smart Status will keep the messaging front and centre, ensure the importance of continuing to innovate and adapt as the community grows, and serve to keep wildlife wild and our community safe.

Yours truly,

*J. D. LOCKWOOD*

Josh Lockwood  
Inspector, Okanagan Region  
Conservation Officer Service

---

Ministry of  
Environment

Conservation  
officer  
Service

Mailing Address:  
102 Industrial Place  
Penticton, BC V2A 7C8

Telephone: 1-250-356-2029  
Facsimile: (250) 490-8210

Page left intentionally blank