

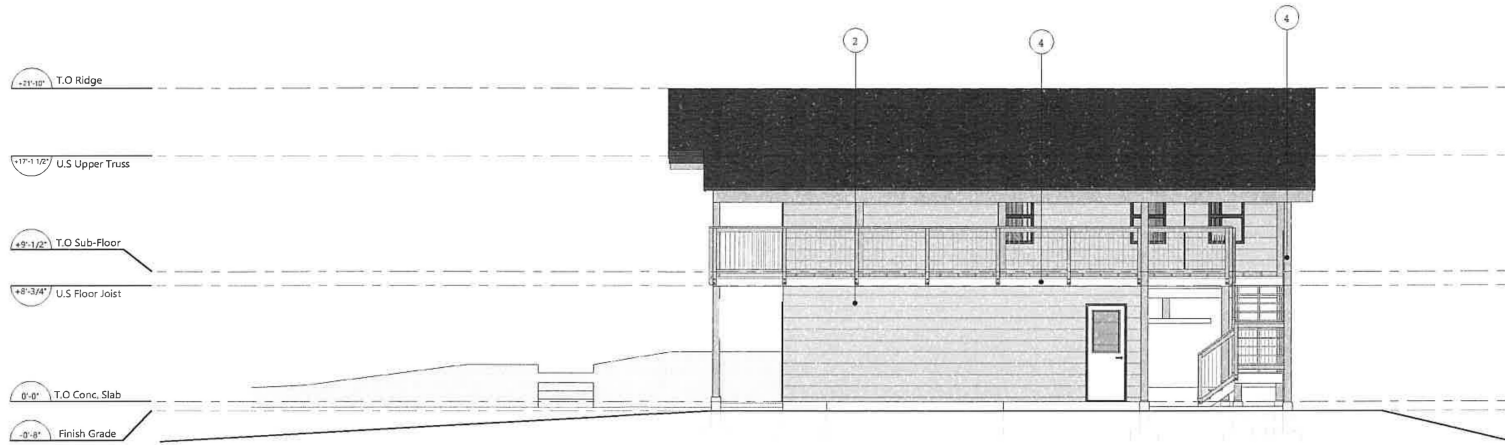
EXTERIOR FINISH KEY

- 1 Existing Siding - Horizontally Oriented (Colour TBD)
- 2 7 1/4" Exposure Siding - Horizontally Oriented (Colour TBD)
- 3 Vertical Board and Batt (Colour TBD)
- 4 Smart Trim (Colour TBD)
- 5 Asphalt Shingle
- 6 Fascia - 1x4 Over 1x8 Fascia (Colour TBD)
- 7 Vinyl Windows With 6" Trim (Plygen Or Similar)

A North Elevation
A2.1 Scale: 1/4"=1' (1:48)



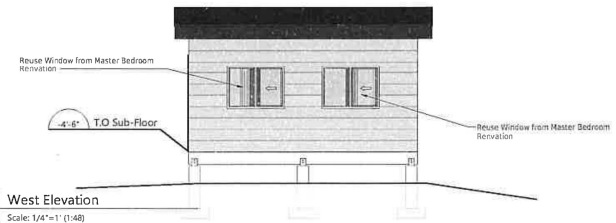
B West Elevation
A2.1 Scale: 1/4"=1' (1:48)



A.1 North Elevation
A2.1 Scale: 1/4"=1' (1:48)



B.1 West Elevation
A2.1 Scale: 1/4"=1' (1:48)

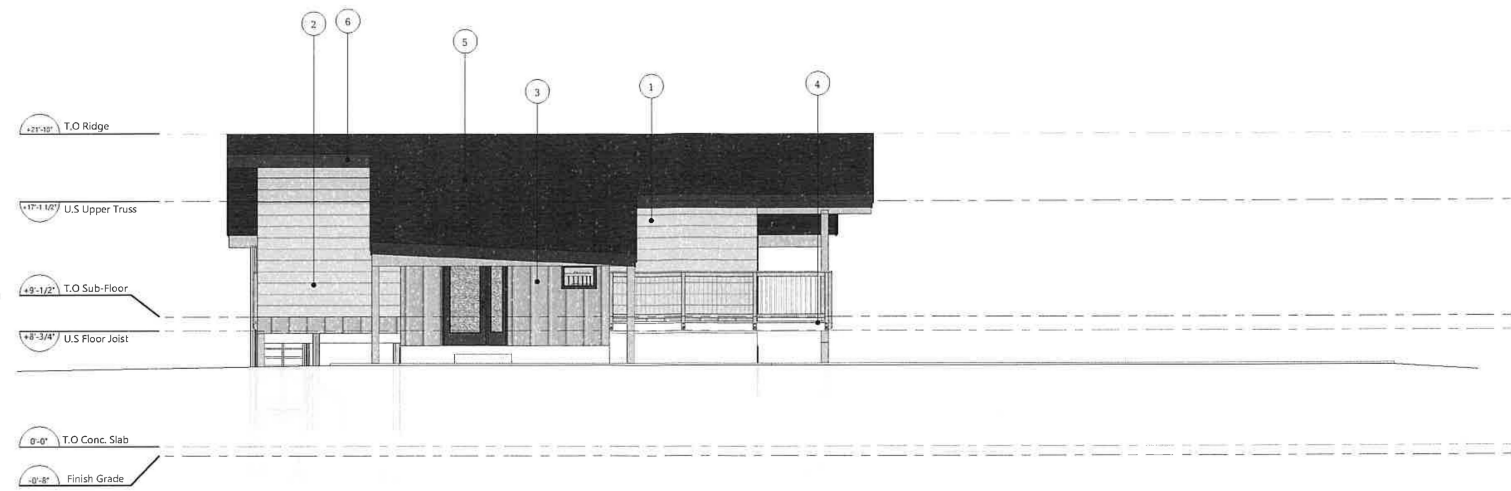


THIS DRAWING IS NOT BE SEALED. VERIFY ALL DIMENSIONS AND DETAILS PRIOR TO CONSTRUCTION. IT IS THE RESPONSIBILITY OF THE CLIENT TO OBTAIN ALL NECESSARY PERMITS AND INSURANCE. THE DRAWING CONTRACTOR AND ARCHITECT ARE NOT RESPONSIBLE FOR ANY ERRORS OR OMISSIONS FROM THIS SPACE.

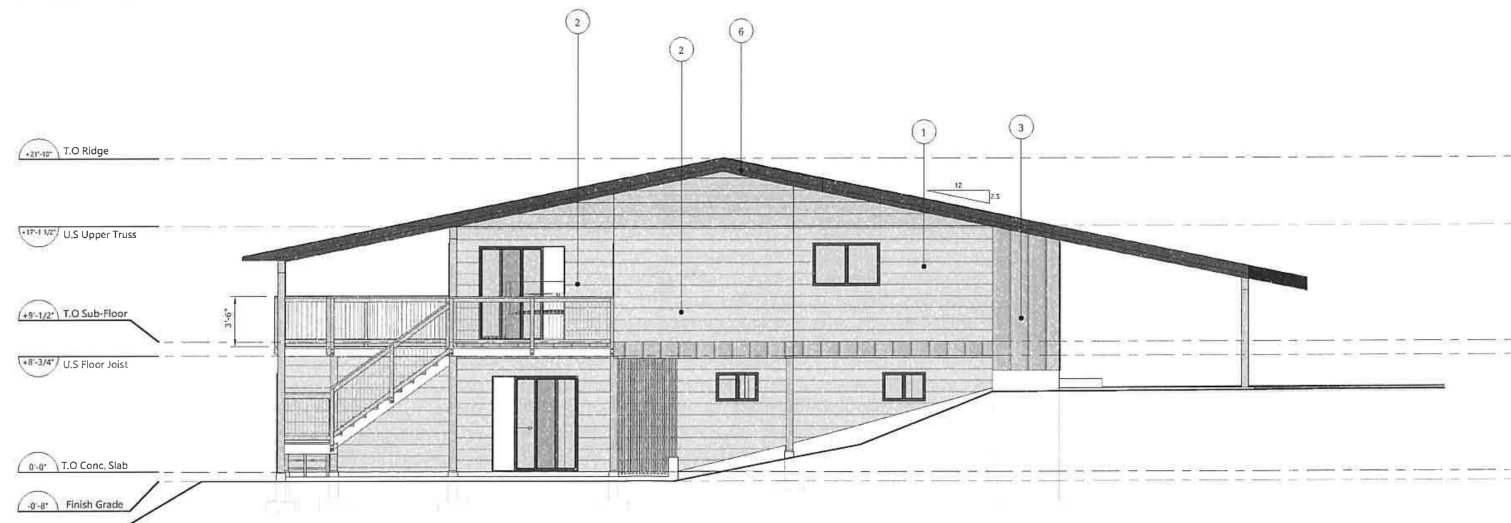




- EXTERIOR FINISH KEY**
- 1 Existing Siding - Horizontally Oriented (Colour TBD)
 - 2 7 1/4" Exposure Siding - Horizontally Oriented (Colour TBD)
 - 3 Vertical Board and Bait (Colour TBD)
 - 4 Smart Trim (Colour TBD)
 - 5 Asphalt Shingle
 - 6 Fascia - 1x4 Over 1x8 Fascia (Colour TBD)
 - 7 Vinyl Windows With 6" Trim (Plygem Or Similar)



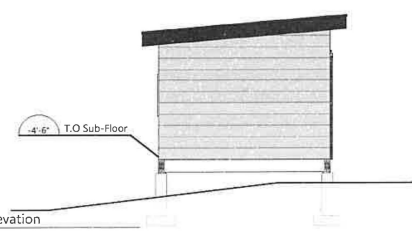
C East Elevation
A2.2 Scale: 1/4"=1' (1:48)



D South Elevation
A2.2 Scale: 1/4"=1' (1:48)



C.1 East Elevation
A2.2 Scale: 1/4"=1' (1:48)



D.1 South Elevation
A2.2 Scale: 1/4"=1' (1:48)

THIS DRAWING PART NOT BE SEALD UNLESS THE ENGINEER HAS CONDUCTED THE NECESSARY INSPECTIONS AND CONSTRUCTION ARE NOT IN ACCORDANCE WITH THE REQUIREMENTS OF THE BUILDING CODE.