

**RV1: 2021 HIGHLAND OPEN RANGE, CSA
APPROVED, ALL SEASON, 42' FEET**



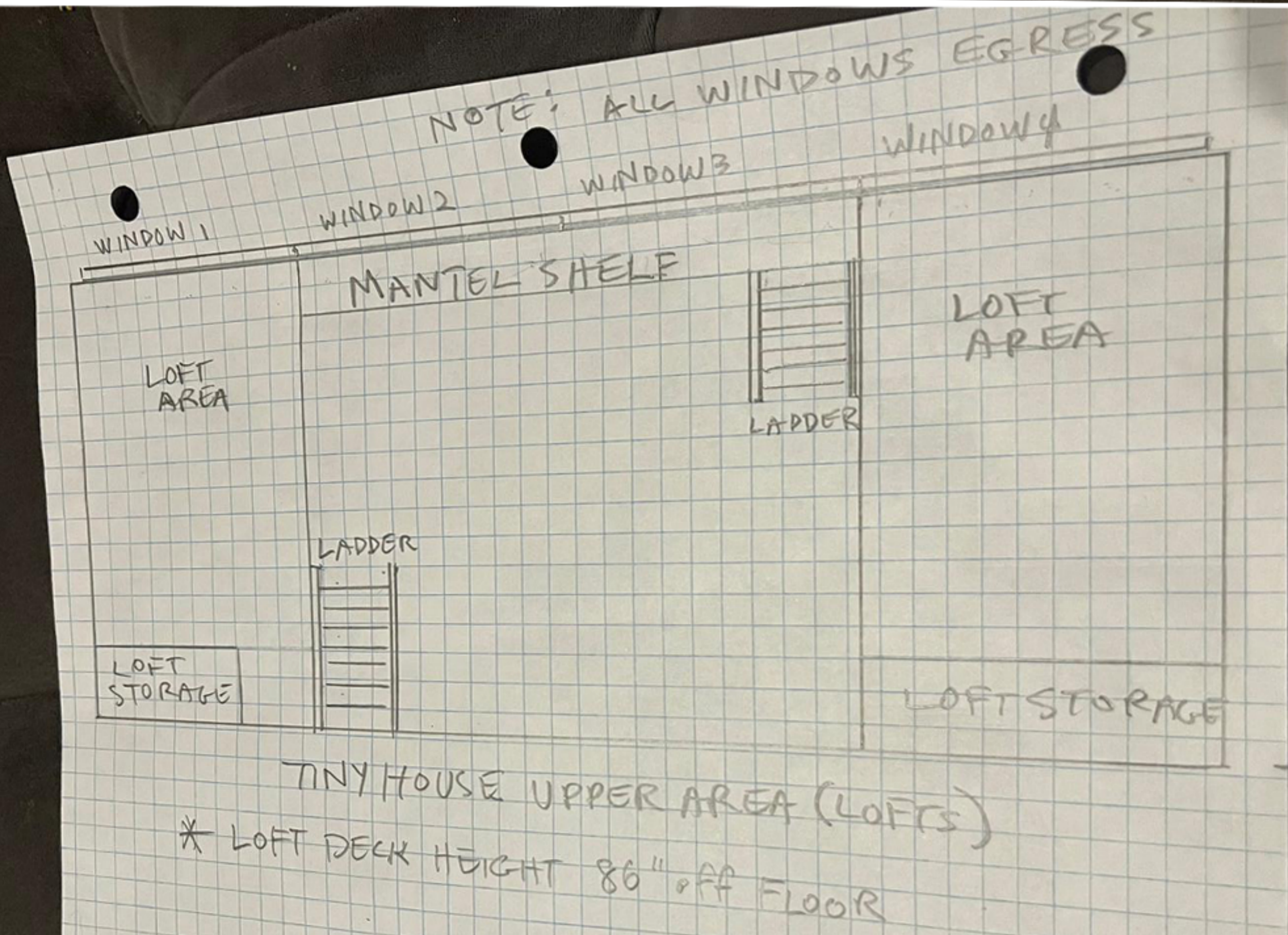
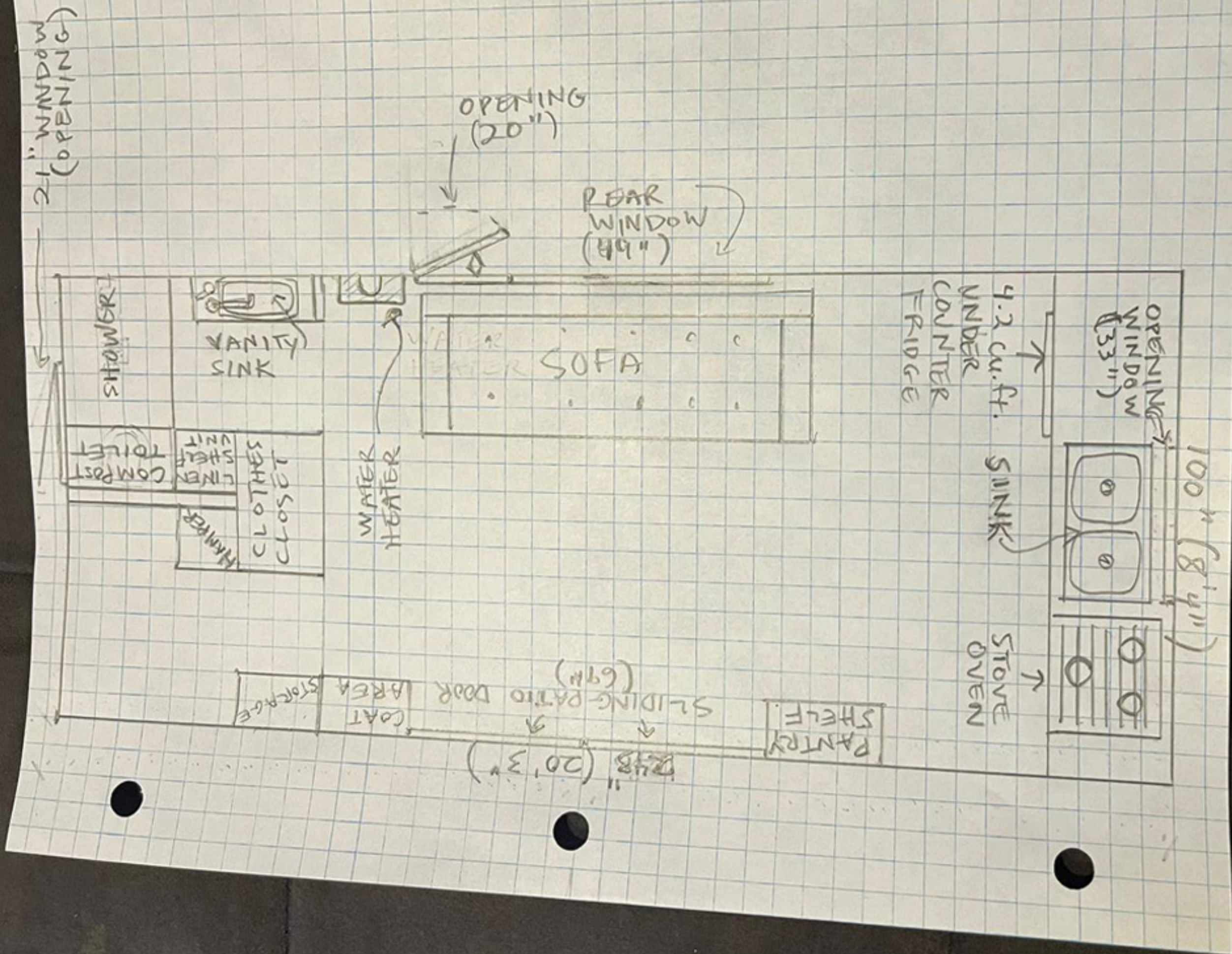
**RV2: 2013 OPEN ROAMER RT 296BHS, CSA
APPROVED, ALL SEASON, 33' FEET**



TEMPORARY 8 x 12' BATHROOM



TINY HOUSE DWELLING FLOORPLAN

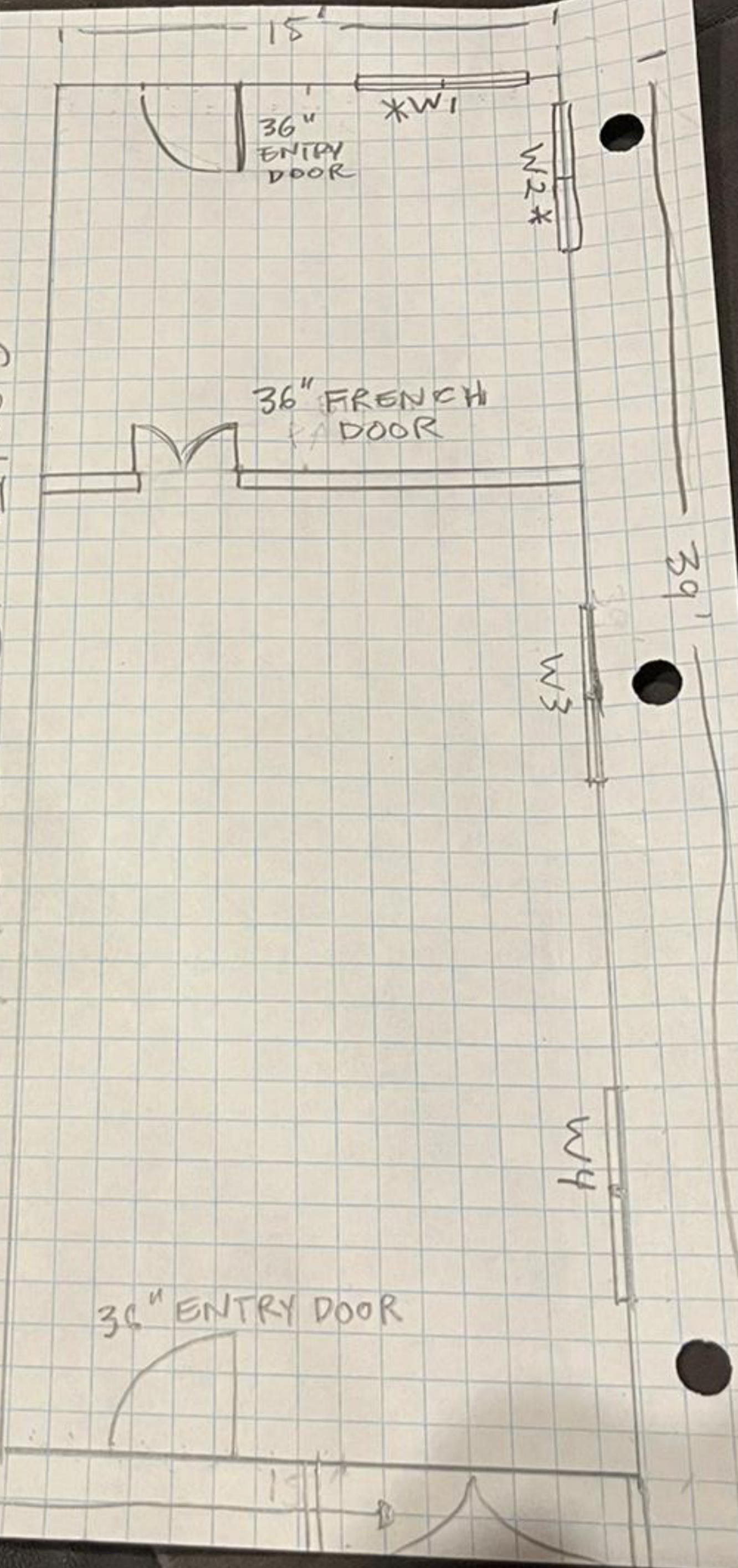


ACCESSORY STRUCTURE WORKSHOP FLOORPLAN

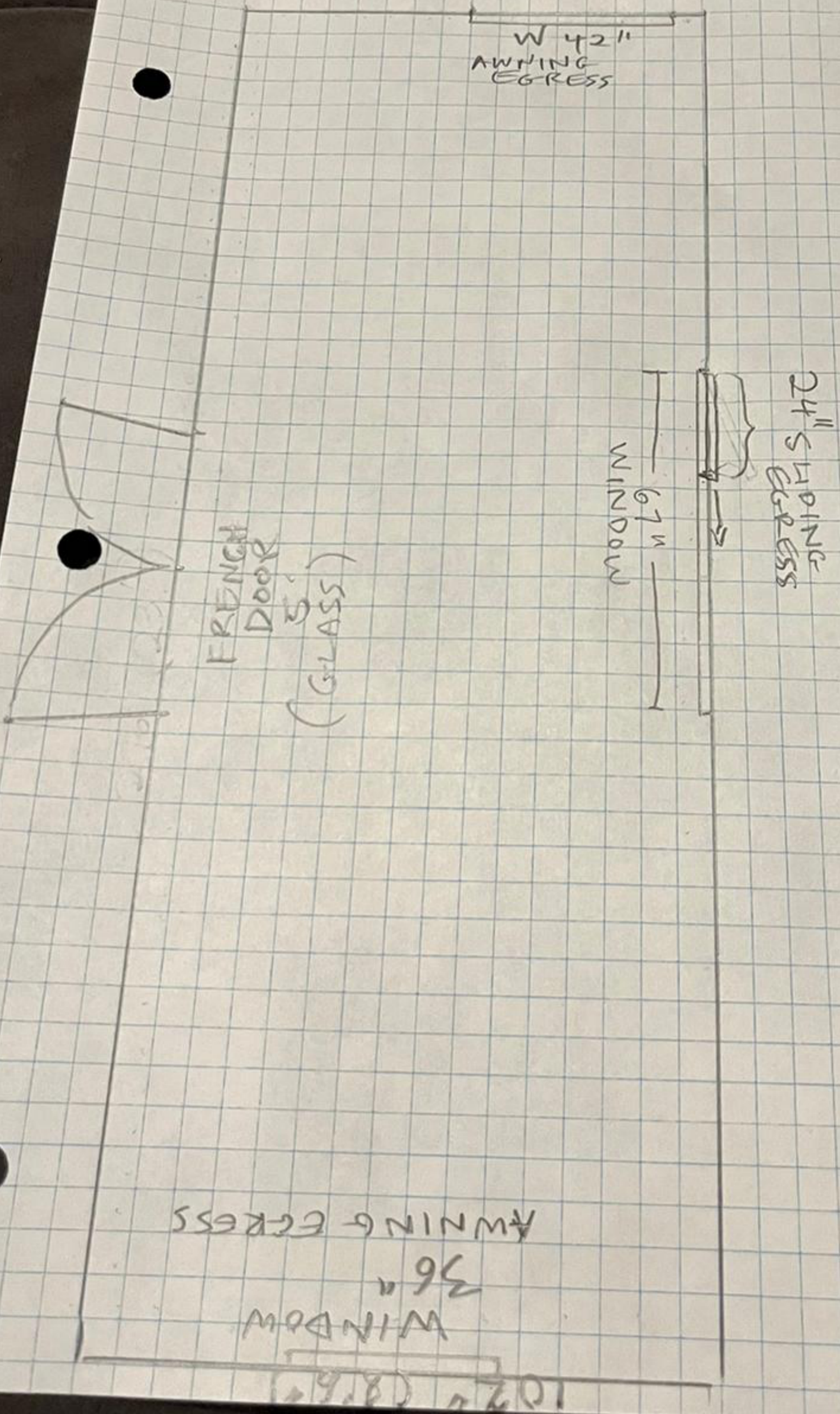
- * - WINDOWS W1, W2, W3, W4 ARE 60" W x 40" H
- WINDOWS ARE HALF SLIDING WITH 26" W x 37" H EGRESS
- BOTTOM OF WINDOW IS 40" FROM FINISHED FLOOR

CONTAINER SHOP (40' x 39')

- EXISTING CONTAINER BAY DOORS ARE STILL FUNCTIONAL ON ONE UNIT.
- DOORS ARE BUILT OUT AND INSULATED AS AN OPENING WALL.



TINY HOUSE ACCESSORY STRUCTURE FLOORPLAN



TINY HOUSE AUXILIARY AREA
* CURRENTLY UNFINISHED / STORAGE