

ALDUS RESIDENCE

PROJECT AND SITE DATA

Street Address 136 RITCHIE AVE., NARAMATA, B.C.

Municipality RDOS

Legal Description

LOT 11, BLOCK 7, DL 210, OSOYOOS DIVISION YALE DIST, PLAN KAP519
PID: 002-164-698

Applicable Codes and Bylaws British Columbia Building Code 2018 (BCBC 2018)
National Energy Code of Canada for Buildings 2017 (NECB 2017)
RDOS ELECTORAL 'E', Zoning By-law No. 2459

Building Form Occupancy Type - RESIDENTIAL
Number of Stories 2

Zoning - RS1
Land Use - SINGLE FAMILY RESIDENTIAL

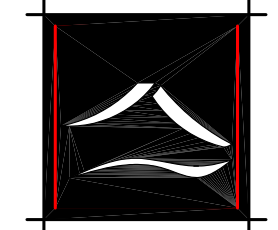
Lot Size - 6343.33 sq. ft. (589.31 sq.m.)

CONSULTANTS:

-	STRUCTURAL Structural Engineering by contact:
-	GEOTECHNICAL Geotechnical Engineering by contact:
-	HVAC AND PLUMBING Mechanical Engineering and Plumbing design by contact:
-	ELECTRICAL Electrical Engineering by contact:
-	SURVEY Survey by contact:
-	CIVIL Site Consultation by contact:

DRAWING SET LIST

A001	TITLE SHEET, PROJECT INFORMATION, DRAWING SET LIST
A100	SITE PLAN
A100.1	LANDSCAPE PLAN
A101	MAIN FLOOR PLAN
A102	SECOND FLOOR PLAN
A103	ROOF LAYOUT
A200	ELEVATIONS
A201	ELEVATIONS



**NORMAN
GODDARD**
architecture + design

209-212 Main Street
Penticton
British Columbia
V2A 5B2
250-770-1104

no.	date	revision
1	21.03.10	PRELIMINARY FOR REVIEW
2	21.03.26	PRELIMINARY FOR REVIEW
3	21.04.12	PRELIMINARY FOR REVIEW
4	21.04.20	PRELIMINARY FOR REVIEW
5	21.04.23	PRELIMINARY FOR REVIEW
6	21.04.30	PRELIMINARY FOR REVIEW
7	21.07.01	PRELIMINARY FOR REVIEW
8	21.07.19	RELEASE FOR DEVELOPMENT PERMIT
9	21.09.22	FOR REVIEW
10	21.09.28	FOR REVIEW
11	21.10.01	FOR REVIEW

project title

ALDUS RESIDENCE

136 RITCHIE AVE.
NARAMATA, B.C.

dwg. title

COVER SHEET

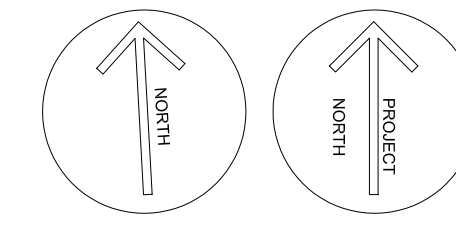
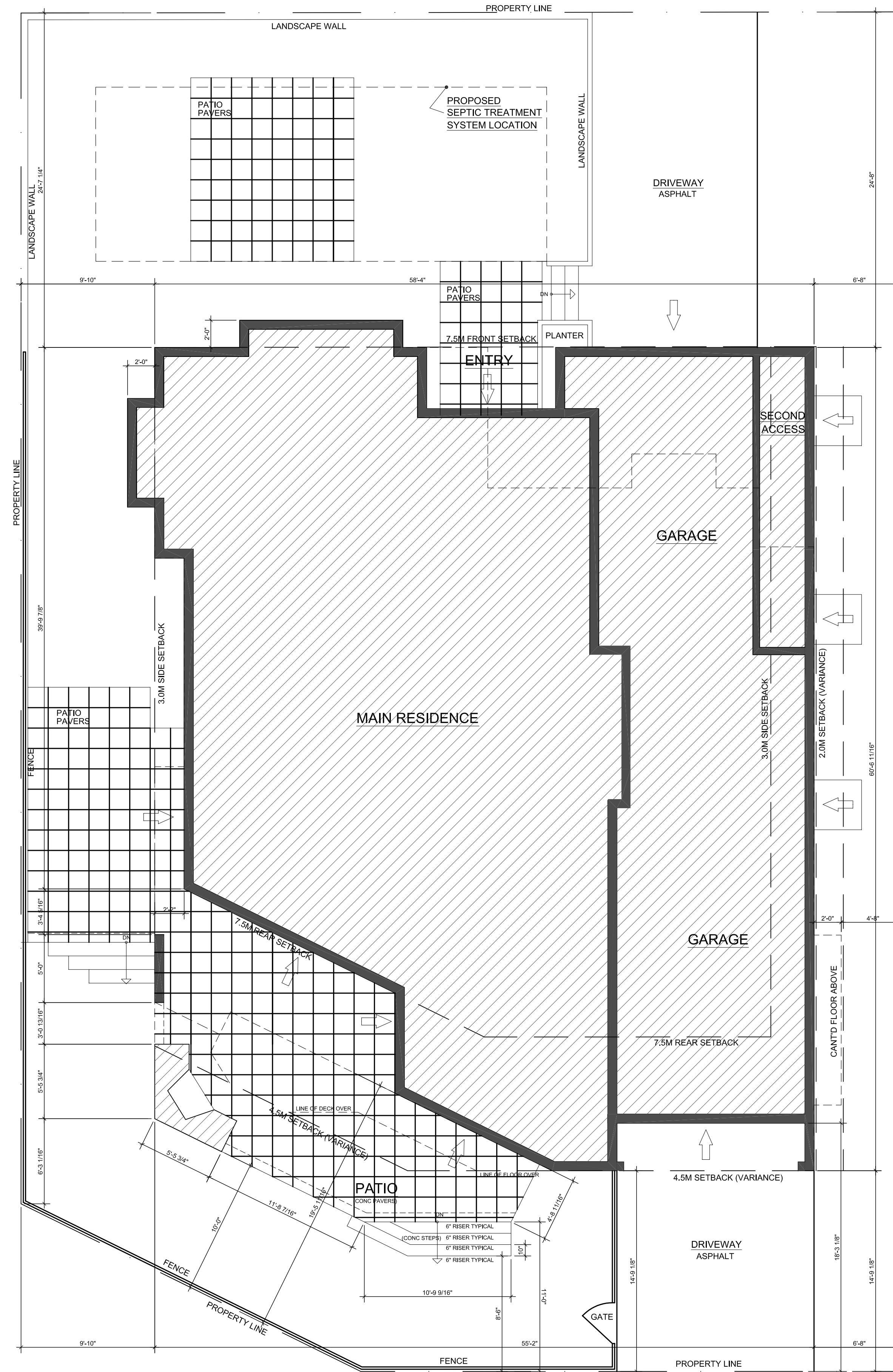
dr: DJ date: 2021.10.05

ch: NG scale: NTS

COPYRIGHT
This drawing and design are copyrighted and considered intellectual property of Norman Goddard Architecture. No part of this drawing may be reproduced without written permission from the architect.

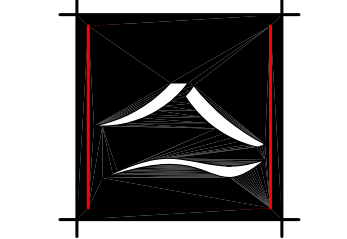
sheet no.
A001

RITCHIE AVE.



LANE

1 SITE-PLAN
A-100 3/16"=1'-0"



**NORMAN
GODDARD**
architecture + design

209-212 Main Street
Penticton
British Columbia
V2A 5B2
250-770-1104

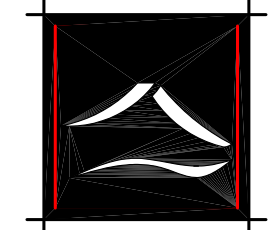
no.	date	revision
1	21.03.30	PRELIMINARY FOR REVIEW
2	21.03.31	PRELIMINARY FOR REVIEW
3	21.04.12	PRELIMINARY FOR REVIEW
4	21.04.20	PRELIMINARY FOR REVIEW
5	21.04.23	PRELIMINARY FOR REVIEW
6	21.04.30	PRELIMINARY FOR REVIEW
7	21.07.01	PRELIMINARY FOR REVIEW
8	21.07.19	RELEASE FOR DEVELOPMENT PERMIT
9	21.09.22	FOR REVIEW
10	21.09.28	FOR REVIEW
11	21.10.01	FOR REVIEW

project title
ALDUS RESIDENCE
136 RITCHIE AVE.
NARAMATA, B.C.

dwg. title
SITE PLAN

dr: DJ date: 2021.10.05
ch: NG scale: 3/16" = 1'-0"

COPYRIGHT
This drawing and design are copyrighted and considered intellectual property of Norman Goddard Architecture. No part of this drawing may be reproduced without written permission from the architect.
sheet no.
A100.0

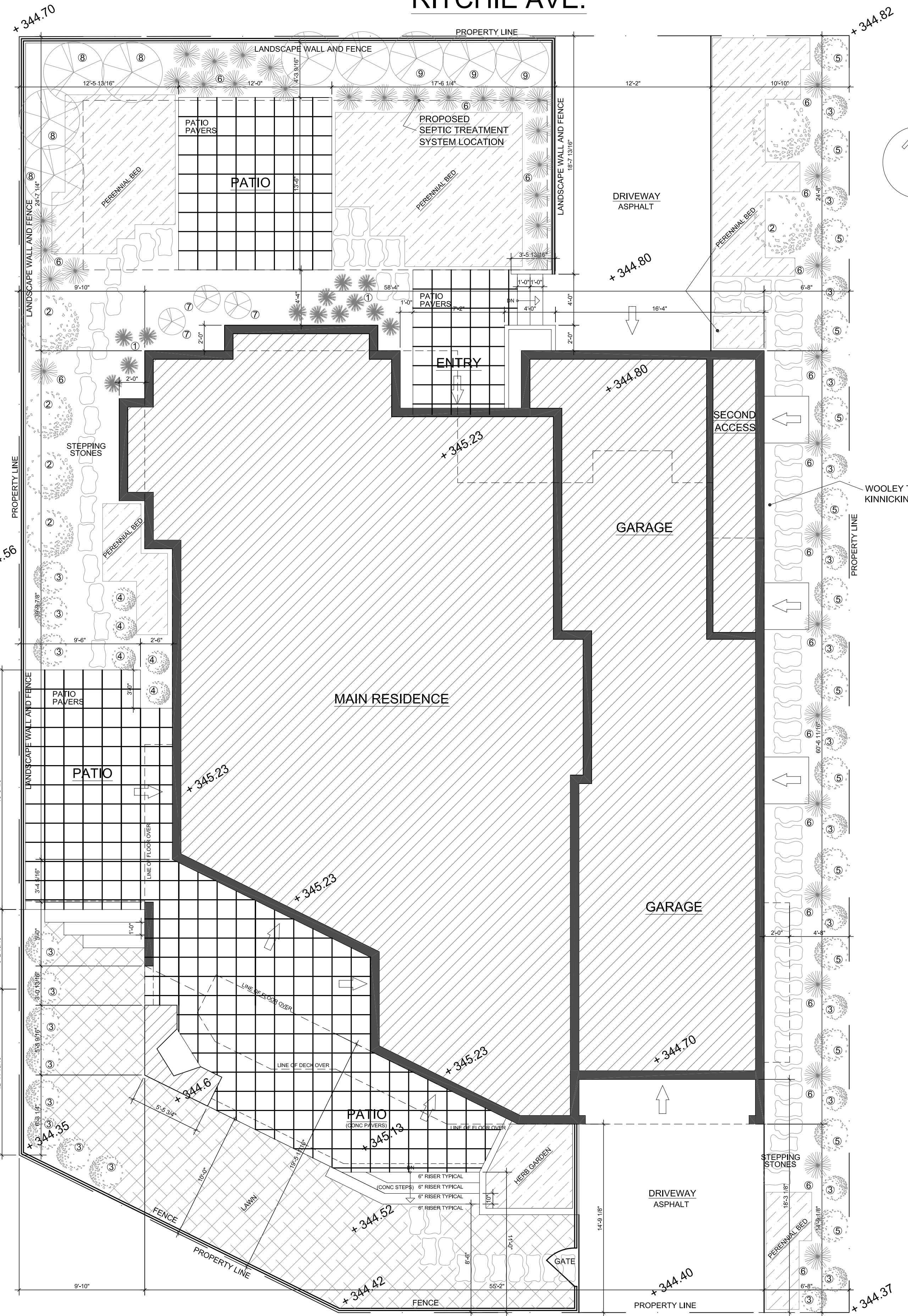


**NORMAN
GODDARD**
architecture + design

209-212 Main Street
Penticton
British Columbia
V2A 5B2
250-770-1104

no.	date	revision
1	21.03.10	PRELIMINARY FOR REVIEW
2	21.03.26	PRELIMINARY FOR REVIEW
3	21.03.30	PRELIMINARY FOR REVIEW
4	21.03.31	PRELIMINARY FOR REVIEW
5	21.04.12	PRELIMINARY FOR REVIEW
6	21.04.20	PRELIMINARY FOR REVIEW
7	21.04.21	PRELIMINARY FOR REVIEW
8	21.07.19	RELEASE FOR DEVELOPMENT PERMIT
9	21.09.22	FOR REVIEW
10	21.09.28	FOR REVIEW
11	21.10.01	FOR REVIEW

RITCHIE AVE.



PROPOSED PERENNIAL BEDS TO BE PLANTED WITH A SELECTION OF THE FOLLOWING:

- CORN FLOWER
- EUPHORBIA
- GARDEN PHLOX
- HEUCHERA
- MARGUERITE DAISY
- RUBECKIA
- SALVIA
- SEDUM
- SHASTA DAISY

LARGER GROWTH PLANTS TO BE LOCATED CLOSER TO THE BUILDING/FENCES WITH SMALLER GROWTH PLANTINGS TO BE INTERSPERSED AND TOWARDS THE INTERIOR OF THE PROPERTY

LANDSCAPE COVERAGE MEDIUM FOR PLANTING AREAS IS TO BE A BLACK BARK MULCH OVER A LAYER OF LANDSCAPE FABRIC

- 1 ORNAMENTAL GRASSES
- 2 HAWTHORNE
- 3 CEDARS
- 4 ROSES
- 5 JUNIPERS
- 6 CARL FORESTER GRASSES
- 7 MOCK ORANGE SHRUB
- 8 JAPANESE MAPLES
- 9 RED OZIER DOGWOOD

LANE

1 LANDSCAPE-PLAN
A-100.1 3/16"=1'-0"

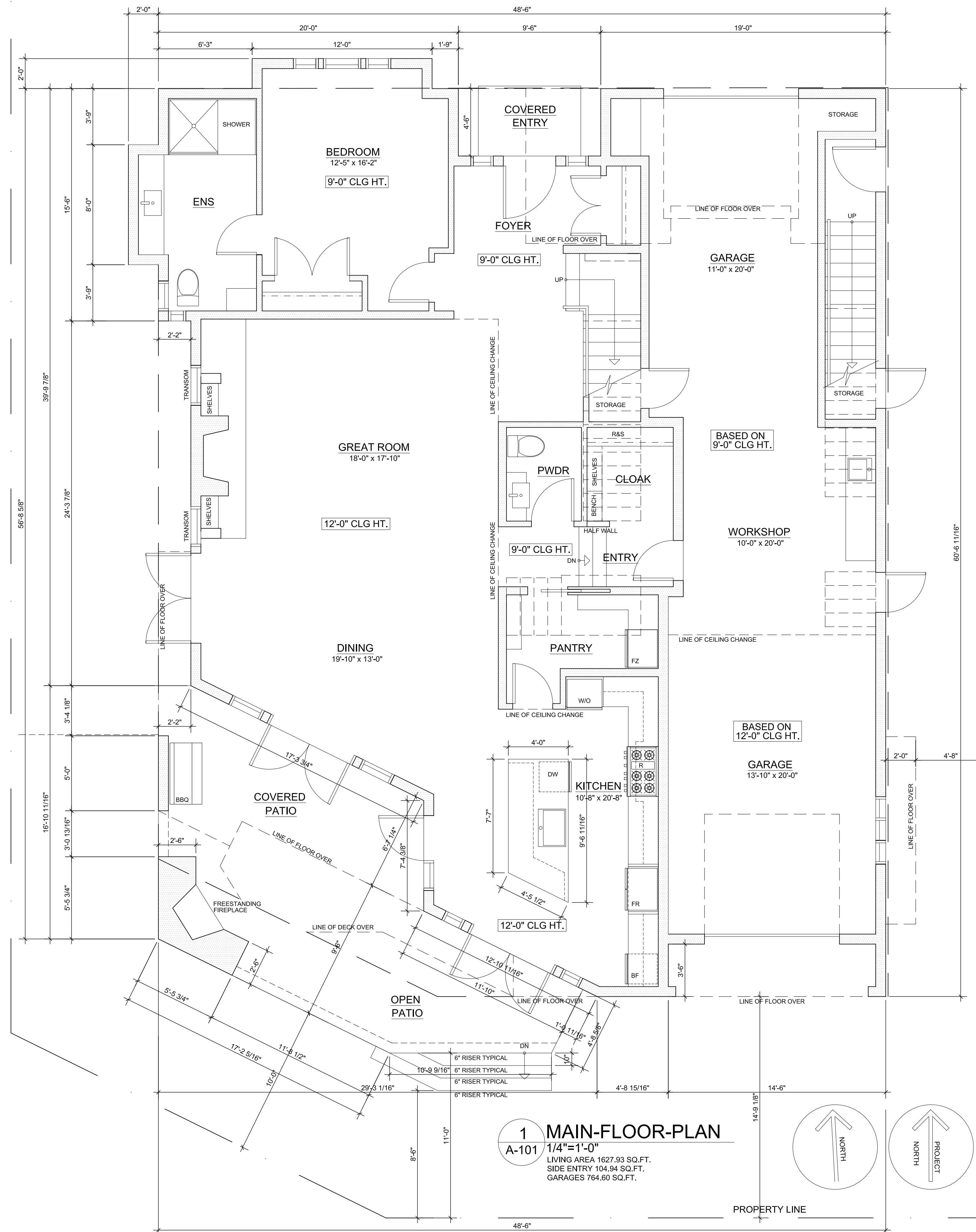
project title
ALDUS RESIDENCE
136 RITCHIE AVE.
NARAMATA, B.C.

dwg. title
LANDSCAPE PLAN

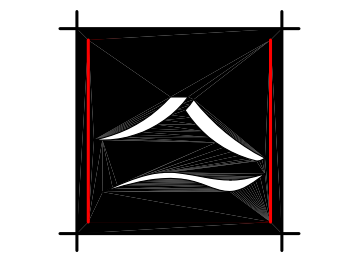
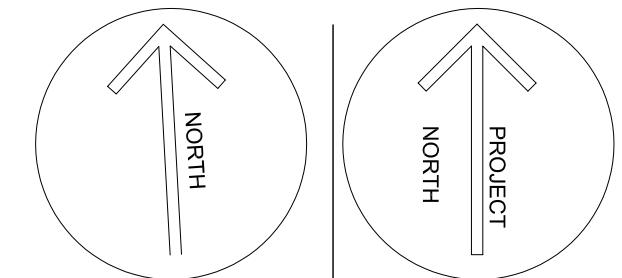
dr: DJ date: 2021.10.05
ch: NG scale: 3/16" = 1'-0"

COPYRIGHT
This drawing and design are copyrighted and considered intellectual property of Norman Goddard Architecture. No part of this drawing may be reproduced without written permission from the architect.

sheet no.
A100.1



1 MAIN-FLOOR-PLAN
 A-101 1/4" = 1'-0"
 LIVING AREA 1627.93 SQ.FT.
 SIDE ENTRY 104.94 SQ.FT.
 GARAGES 764.60 SQ.FT.



NORMAN GODDARD
 architecture + design

209-212 Main Street
 Penticton
 British Columbia
 V2A 5B2
 250-770-1104

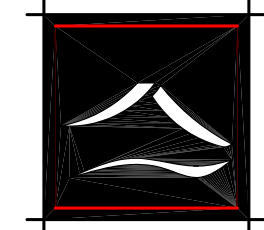
no.	date	revision
1	21.03.30	PRELIMINARY FOR REVIEW
2	21.03.31	PRELIMINARY FOR REVIEW
3	21.04.12	PRELIMINARY FOR REVIEW
4	21.04.20	PRELIMINARY FOR REVIEW
5	21.04.23	PRELIMINARY FOR REVIEW
6	21.04.30	PRELIMINARY FOR REVIEW
7	21.07.01	PRELIMINARY FOR REVIEW
8	21.07.19	RELEASE FOR DEVELOPMENT PERMIT
9	21.09.22	FOR REVIEW
10	21.09.28	FOR REVIEW
11	21.10.01	FOR REVIEW

project title
ALDUS RESIDENCE
 136 RITCHIE AVE.
 NARAMATA, B.C.

dwg. title
MAIN FLOOR PLAN

dr: DJ date: 2021.10.05
 ch: NG scale: 1/4" = 1'-0"

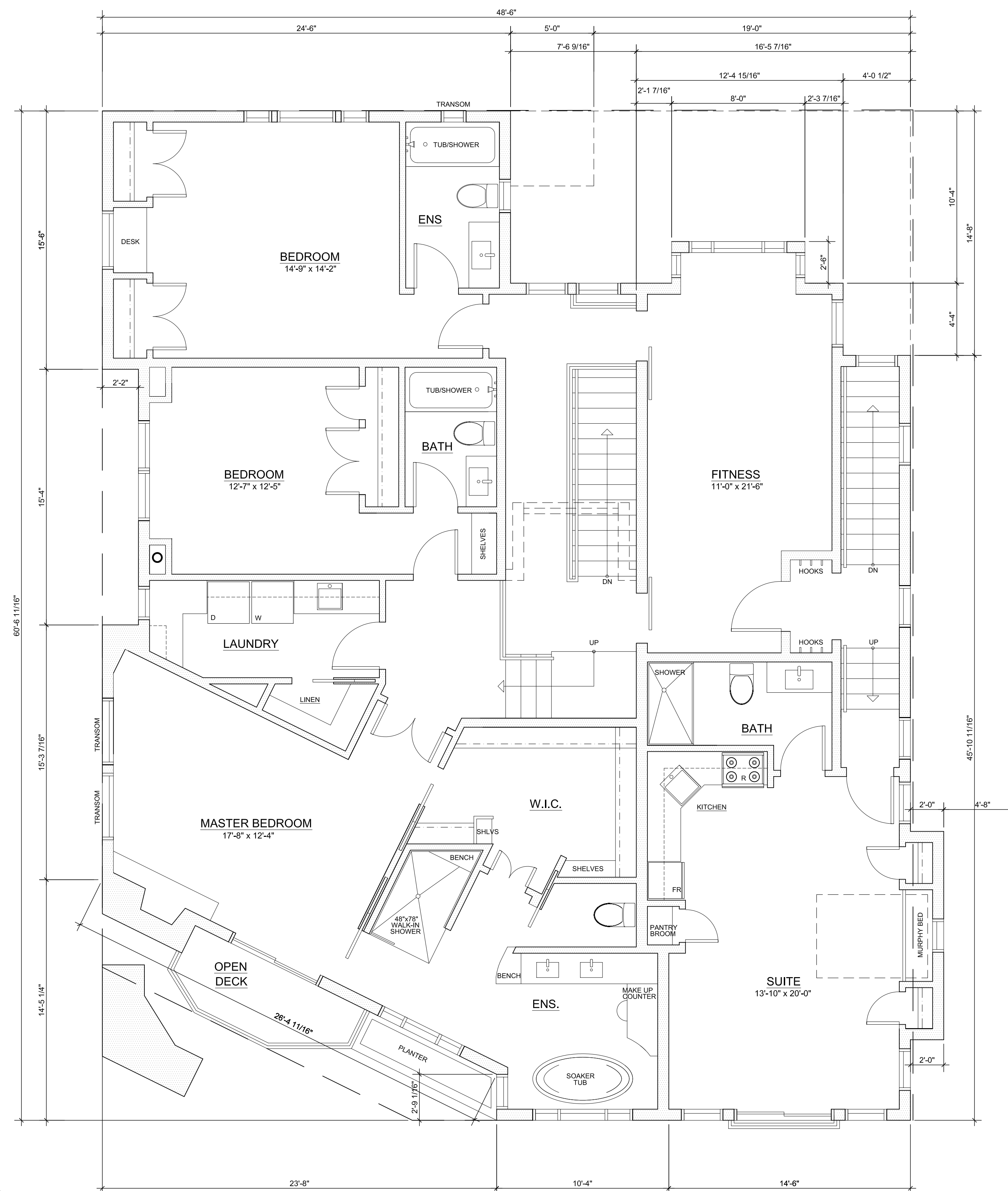
COPYRIGHT
 This drawing and design are copyrighted and considered intellectual property of Norman Goddard Architecture. No part of this drawing may be reproduced without written permission from the architect.
 sheet no.
A101.0



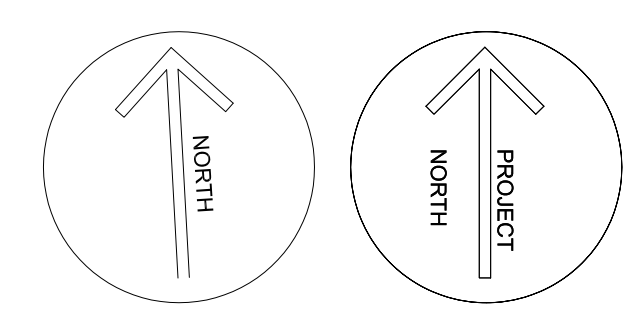
**NORMAN
GODDARD**
architecture + design

209-212 Main Street
Penticton
British Columbia
V2A 5B2
250-770-1104

no.	date	revision
1	21.03.30	PRELIMINARY FOR REVIEW
2	21.03.31	PRELIMINARY FOR REVIEW
3	21.04.12	PRELIMINARY FOR REVIEW
4	21.04.20	PRELIMINARY FOR REVIEW
5	21.04.23	PRELIMINARY FOR REVIEW
6	21.04.30	PRELIMINARY FOR REVIEW
7	21.07.01	PRELIMINARY FOR REVIEW
8	21.07.19	RELEASE FOR DEVELOPMENT PERMIT
9	21.09.22	FOR REVIEW
10	21.09.28	FOR REVIEW
11	21.10.01	FOR REVIEW



1 SECOND-FLOOR-PLAN
A-102 1/4"=1'-0"
LIVING AREA 1940.71 SQ.FT.
SUITE AREA 546.37 SQ.FT.

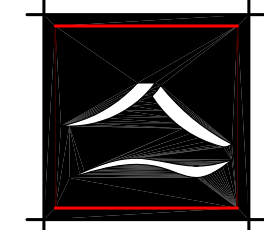


project title
ALDUS RESIDENCE
136 RITCHIE AVE.
NARAMATA, B.C.

dwg. title
SECOND FLOOR PLAN

dr: DJ date: 2021.10.05
ch: NG scale: 1/4" = 1'-0"

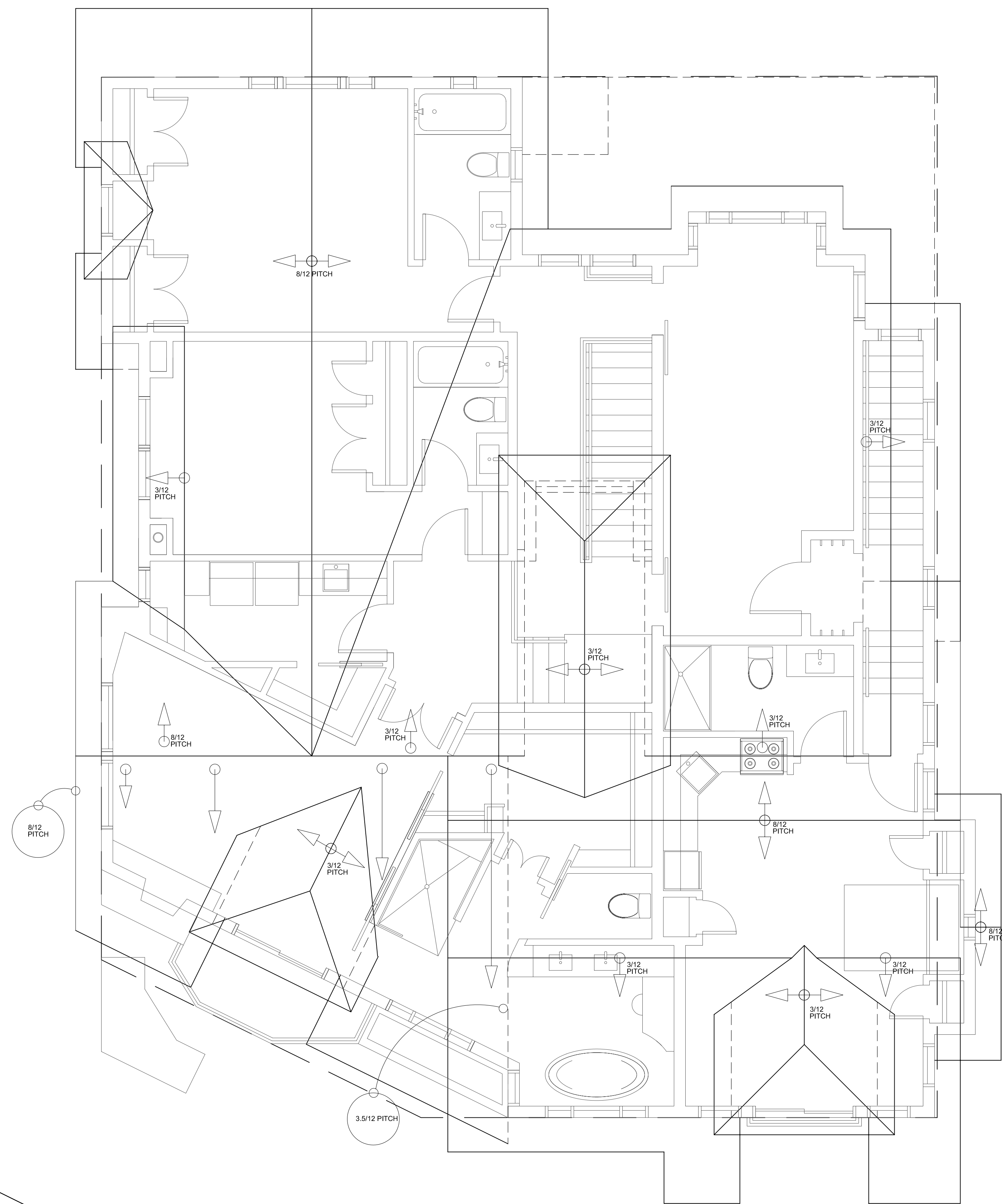
COPYRIGHT
sheet no.
A102.0



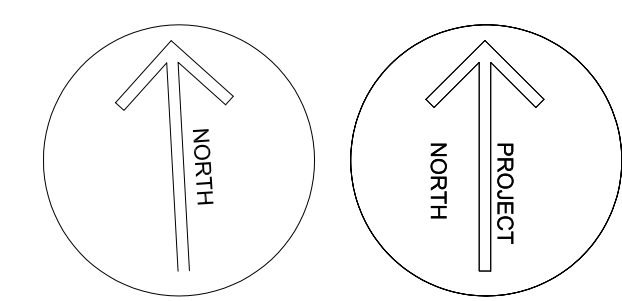
**NORMAN
GODDARD**
architecture + design

209-212 Main Street
Penticton
British Columbia
V2A 5B2
250-770-1104

no.	date	revision
1	21.10.05	PRELIMINARY FOR REVIEW
2		
3		
4		
5		
6		
7		
8		
9		
10		
11		



1 ROOF-LAYOUT
A-103 1/4"=1'-0"



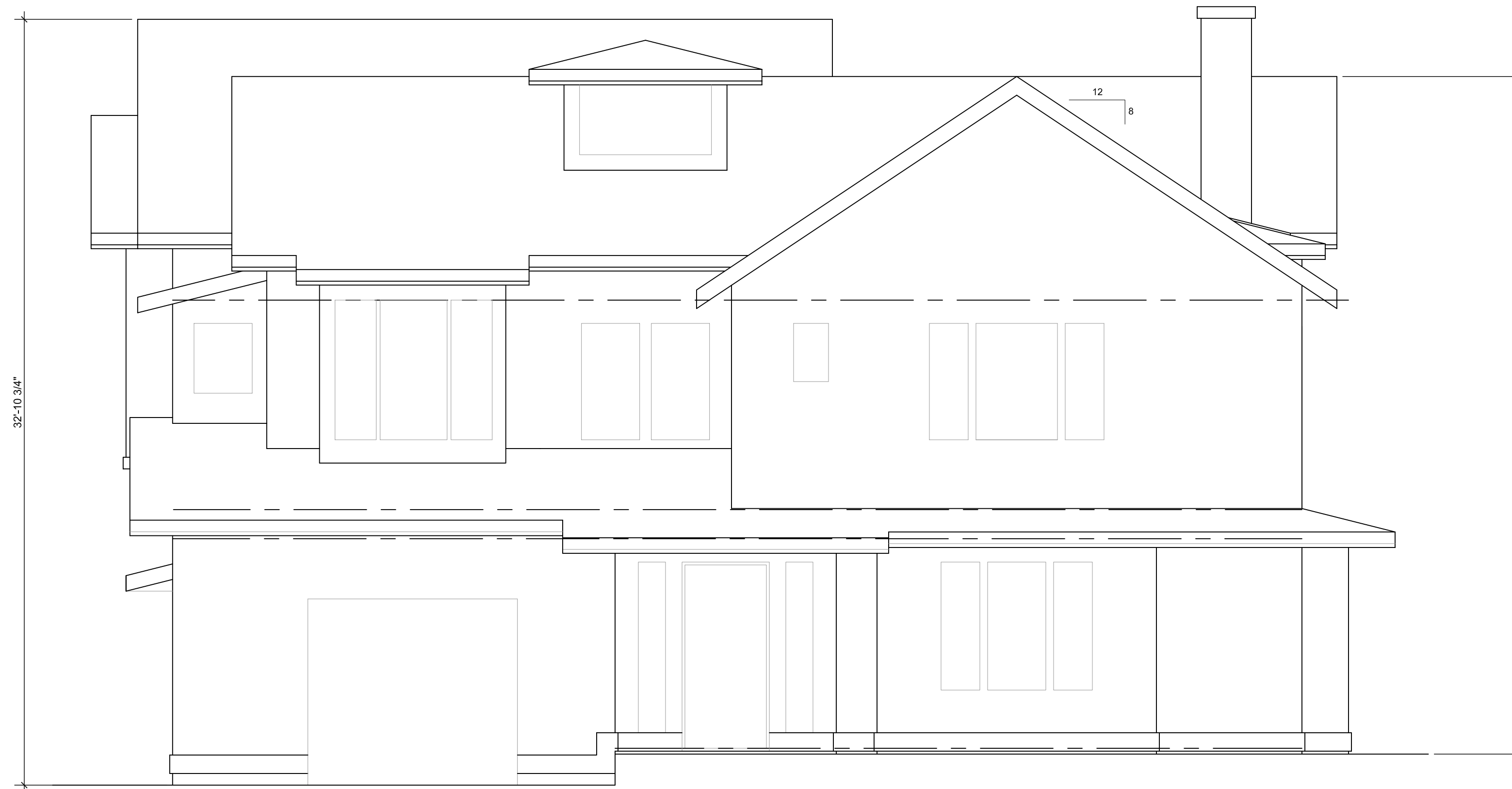
project title
ALDUS RESIDENCE
136 RITCHIE AVE.
NARAMATA, B.C.

dwg. title
ROOF LAYOUT

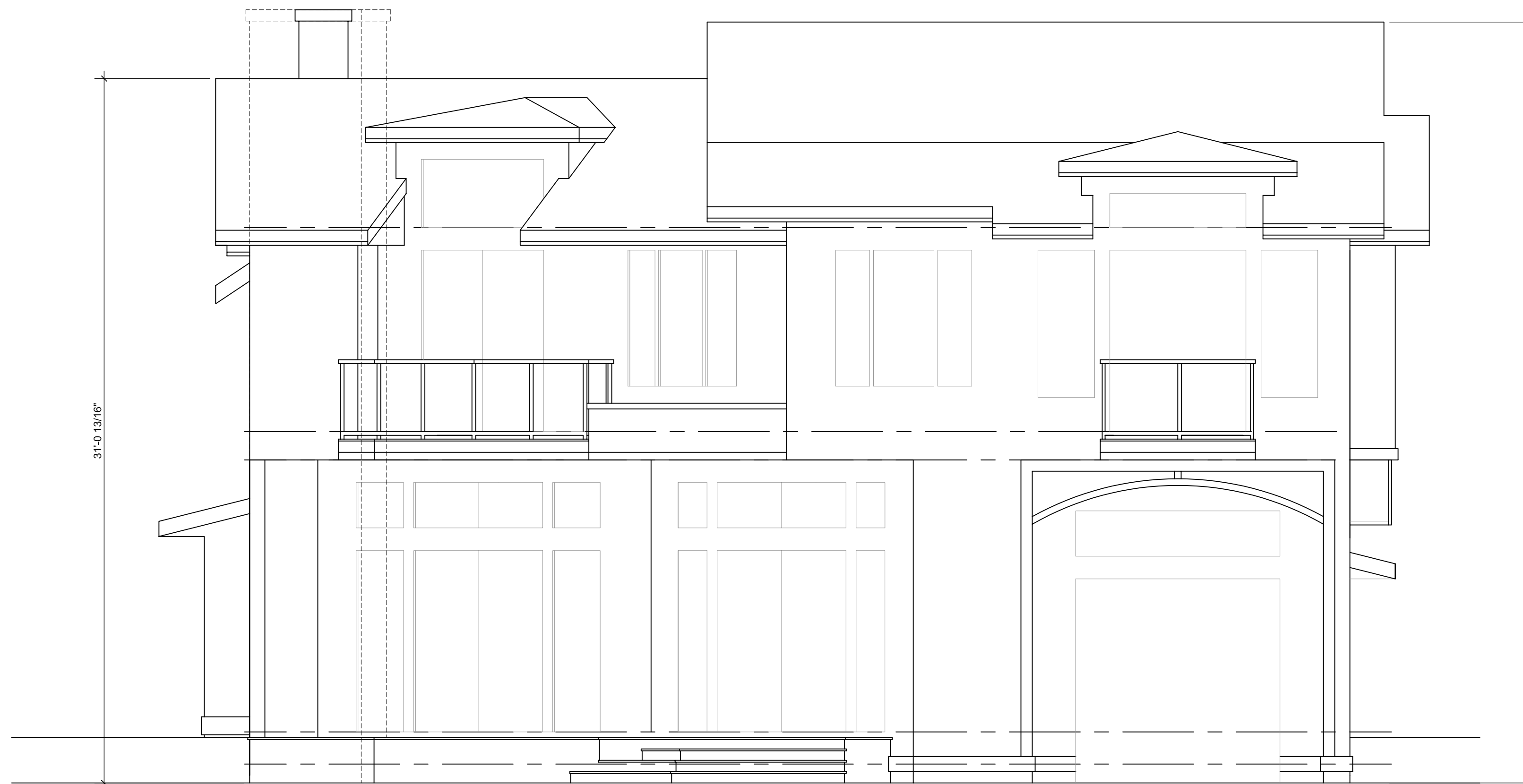
dr: DJ date: 2021.10.05
ch: NG scale: 1/4" = 1'-0"

COPYRIGHT
This drawing and design are copyrighted and considered intellectual property of Norman Goddard Architecture. No part of this drawing may be reproduced without written permission from the architect.

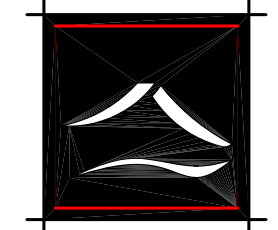
sheet no.
A103.0



1 NORTH-ELEVATION
A-200 1/4"=1'-0"



2 SOUTH-ELEVATION
A-200 1/4"=1'-0"



**NORMAN
GODDARD**
architecture + design

209-212 Main Street
Penticton
British Columbia
V2A 5B2
250-770-1104

no.	date	revision
1	21.03.10	PRELIMINARY FOR REVIEW
2	21.03.26	PRELIMINARY FOR REVIEW
3	21.10.01	PRELIMINARY FOR REVIEW
4	21.10.05	PRELIMINARY FOR HT. REVIEW
5		
6		
7		
8		
9		
10		
11		

project title
ALDUS RESIDENCE

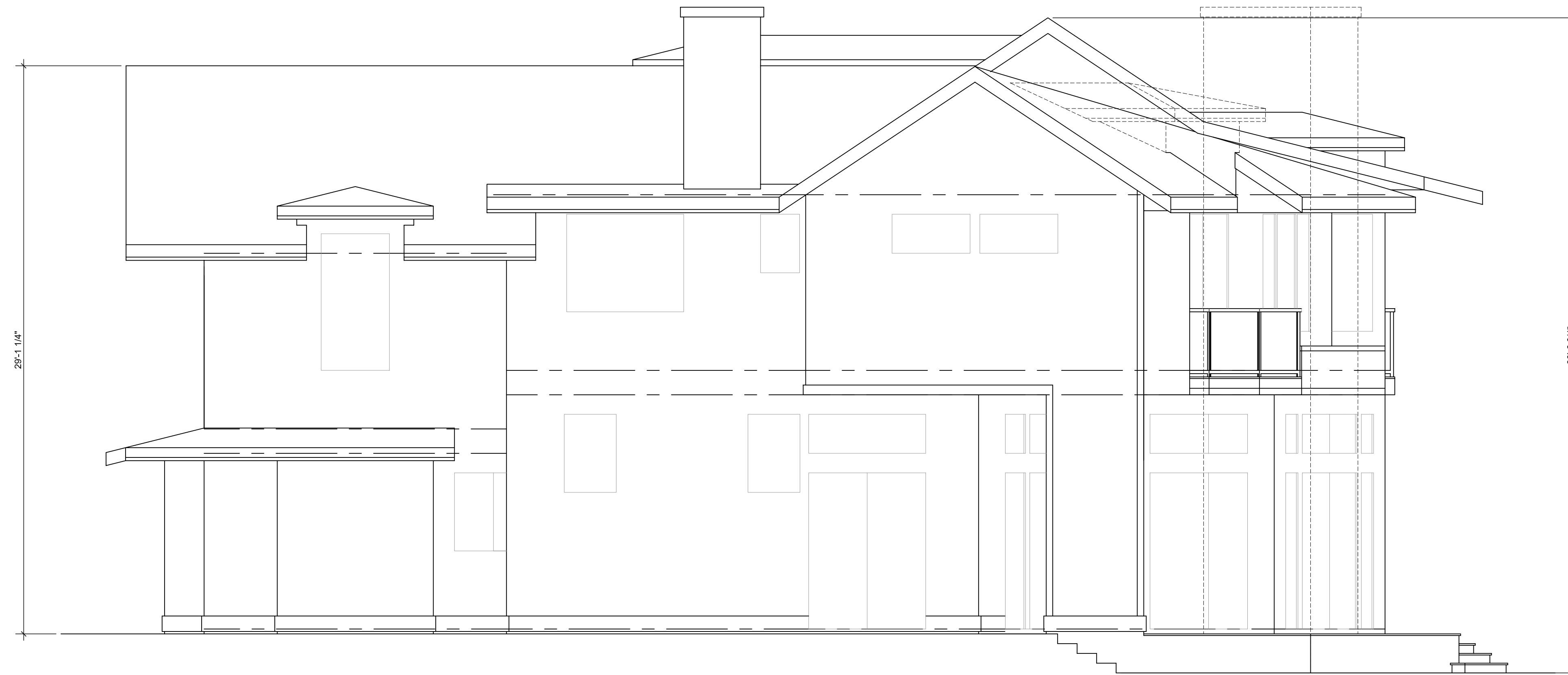
136 RITCHIE AVE.
NARAMATA, B.C.

dwg. title
ELEVATIONS

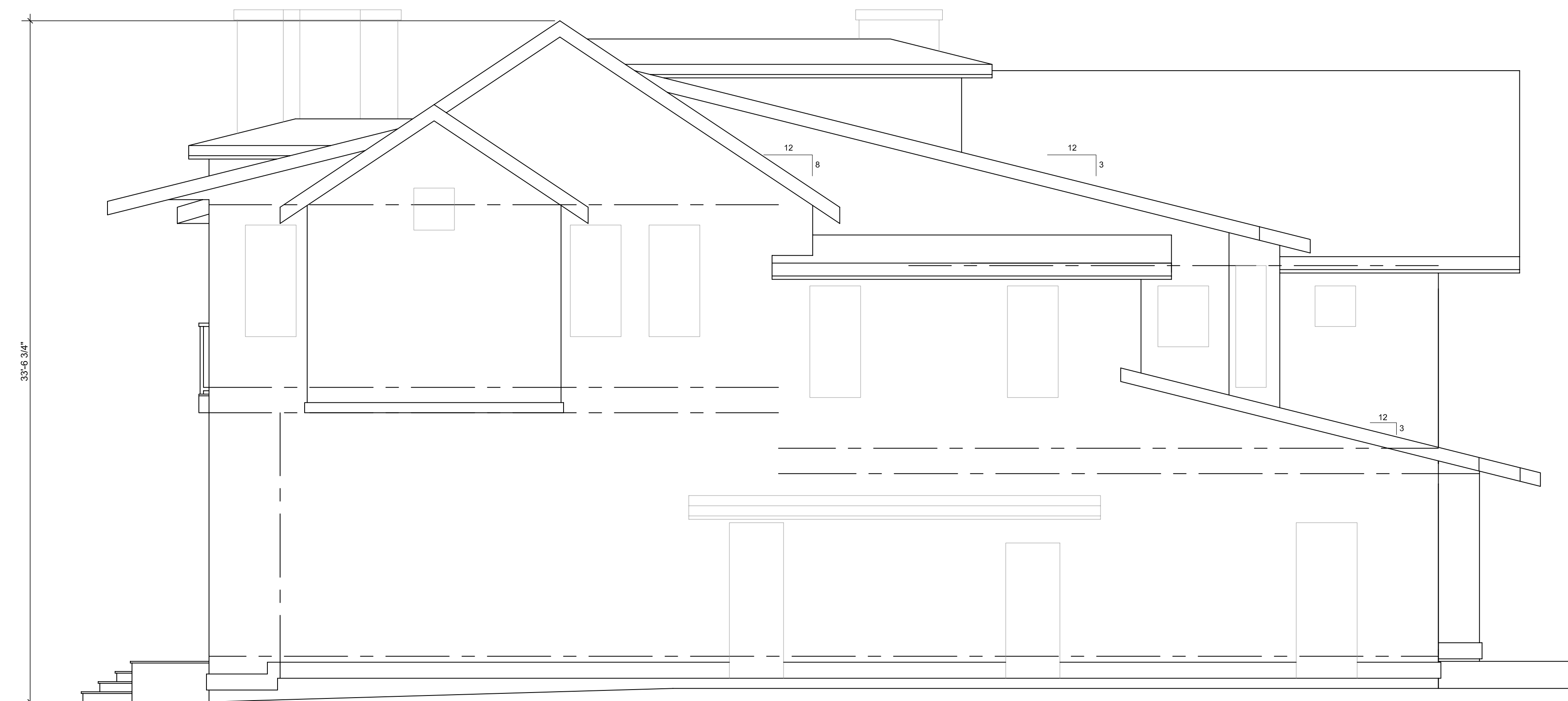
dr: DJ date: 2021.10.05
ch: NG scale: 1/4" = 1'-0"

COPYRIGHT
© This drawing and design are copyrighted and considered intellectual property of Norman Goddard Architecture. No part of this drawing may be reproduced without written permission from the architect.

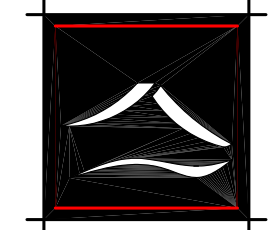
sheet no.
A200.0



1 WEST-ELEVATION
A-201 1/4"=1'-0"



2 EAST-ELEVATION
A-201 1/4"=1'-0"



**NORMAN
GODDARD**
architecture + design

209-212 Main Street
Penticton
British Columbia
V2A 5B2
250-770-1104

no.	date	revision
1	21.03.10	PRELIMINARY FOR REVIEW
2	21.03.26	PRELIMINARY FOR REVIEW
3	21.10.01	PRELIMINARY FOR REVIEW
4	21.10.05	PRELIMINARY FOR HT. REVIEW
5		
6		
7		
8		
9		
10		
11		

project title
ALDUS RESIDENCE
136 RITCHIE AVE.
NARAMATA, B.C.

dwg. title
ELEVATIONS

dr: DJ date: 2021.10.05
ch: NG scale: 1/4" = 1'-0"

COPYRIGHT
This drawing and design are copyrighted and considered intellectual property of Norman Goddard Architecture. No part of this drawing may be reproduced without written permission from the architect.

sheet no.
A201.0