

# ALDUS RESIDENCE

## PROJECT AND SITE DATA

**Street Address** 136 RITCHIE AVE., NARAMATA, B.C.

**Municipality** RDOS

### Legal Description

LOT 11, BLOCK 7, DL 210, OSOYOOS DIVISION YALE DIST, PLAN KAP519  
PID: 002-164-698

**Applicable Codes and Bylaws** British Columbia Building Code 2018 (BCBC 2018)  
National Energy Code of Canada for Buildings 2017 (NECB 2017)  
RDOS ELECTORAL 'E', Zoning By-law No. 2459

**Building Form** Occupancy Type - RESIDENTIAL  
Number of Stories 2

**Zoning - RS1**  
**Land Use - SINGLE FAMILY RESIDENTIAL**

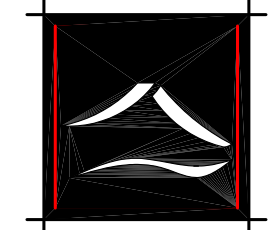
**Lot Size - 6343.33 sq. ft. (589.31 sq.m.)**

### CONSULTANTS:

-	<b>STRUCTURAL</b> Structural Engineering by ..... contact: .....
-	<b>GEOTECHNICAL</b> Geotechnical Engineering by ..... contact: .....
-	<b>HVAC AND PLUMBING</b> Mechanical Engineering and Plumbing design by ..... contact: .....
-	<b>ELECTRICAL</b> Electrical Engineering by ..... contact: .....
-	<b>SURVEY</b> Survey by ..... contact: .....
-	<b>CIVIL</b> Site Consultation by ..... contact: .....

## DRAWING SET LIST

<b>A001</b>	<b>TITLE SHEET, PROJECT INFORMATION, DRAWING SET LIST</b>
<b>A100</b>	<b>SITE PLAN</b>
<b>A100.1</b>	<b>LANDSCAPE PLAN</b>
<b>A101</b>	<b>MAIN FLOOR PLAN</b>
<b>A102</b>	<b>SECOND FLOOR PLAN</b>
<b>A301</b>	<b>ELEVATIONS</b>
<b>A302</b>	<b>ELEVATIONS</b>
<b>A303</b>	<b>ELEVATIONS</b>
<b>A304</b>	<b>ELEVATIONS</b>



**NORMAN  
GODDARD**  
architecture + design

209-212 Main Street  
Penticton  
British Columbia  
V2A 5B2  
250-770-1104

no.	date	revision
1	21.03.10	PRELIMINARY FOR REVIEW
2	21.03.26	PRELIMINARY FOR REVIEW
3	21.04.12	PRELIMINARY FOR REVIEW
4	21.04.20	PRELIMINARY FOR REVIEW
5	21.04.23	PRELIMINARY FOR REVIEW
6	21.04.30	PRELIMINARY FOR REVIEW
7	21.07.01	PRELIMINARY FOR REVIEW
8	21.07.19	RELEASE FOR DEVELOPMENT PERMIT
9	21.09.22	FOR REVIEW
10		
11		

project title  
**ALDUS RESIDENCE**  
**136 RITCHIE AVE.**  
**NARAMATA, B.C.**

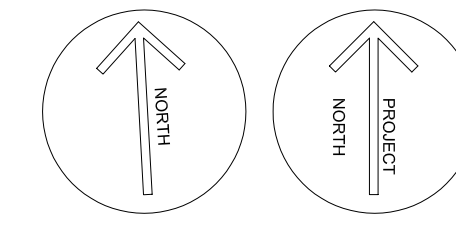
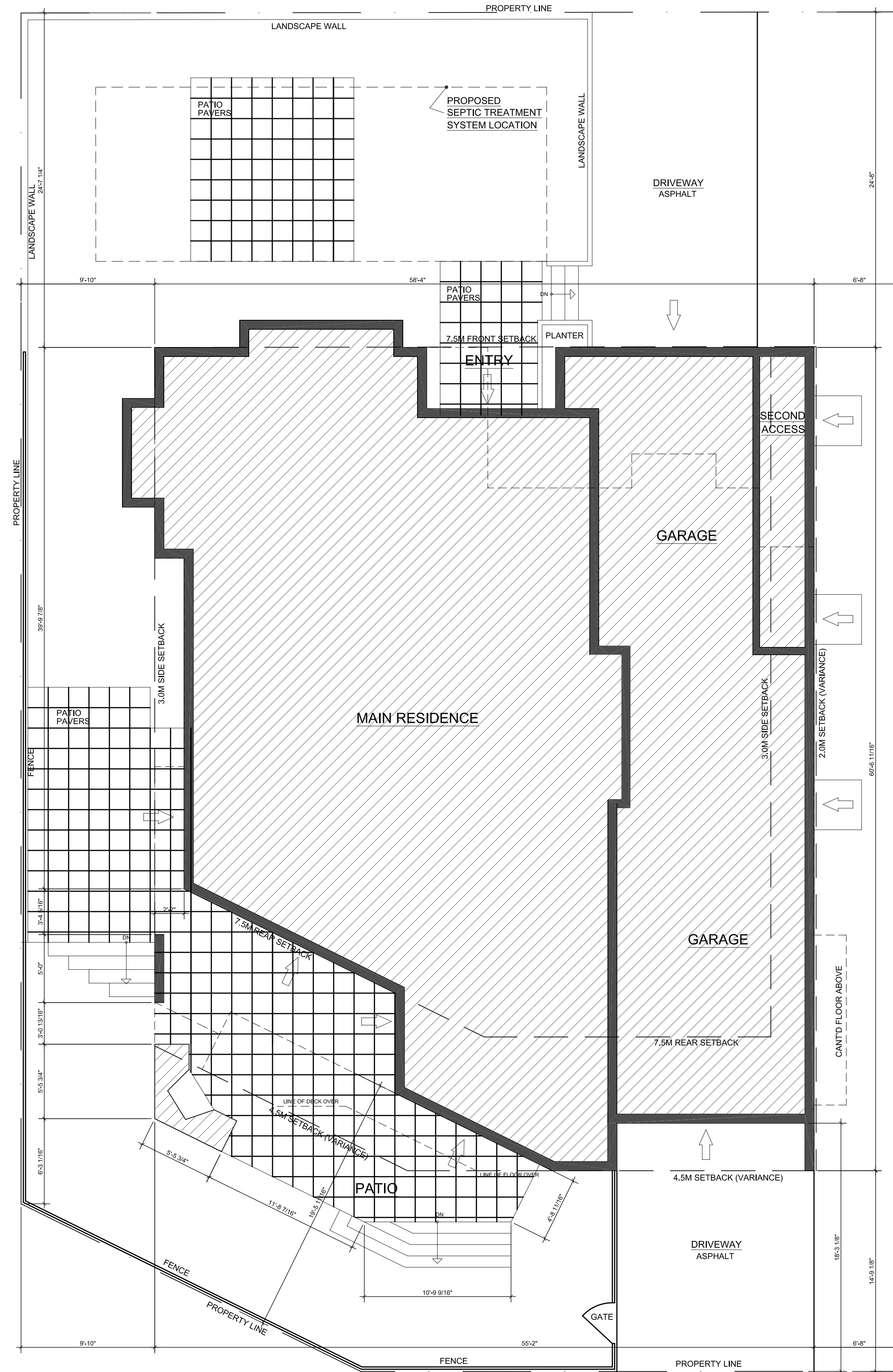
dwg. title  
**COVER SHEET**

dr: DJ      date: 2021.09.22  
ch: NG      scale: NTS

**COPYRIGHT**  
This drawing and design are copyrighted and considered intellectual property of Norman Goddard Architecture. No part of this drawing may be reproduced without written permission from the architect.

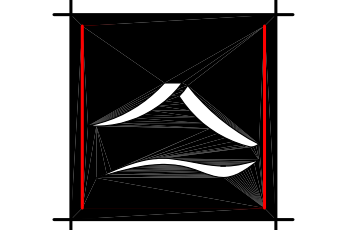
sheet no.  
**A001**

RITCHIE AVE.



LANE

1 SITE-PLAN  
A-100 3/16" = 1'-0"



**NORMAN  
GODDARD**  
architecture + design

209-212 Main Street  
Penticton  
British Columbia  
V2A 5B2  
250-770-1104

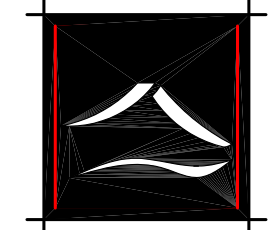
no.	date	revision
1	21.03.10	PRELIMINARY FOR REVIEW
2	21.03.26	PRELIMINARY FOR REVIEW
3	21.03.30	PRELIMINARY FOR REVIEW
4	21.03.31	PRELIMINARY FOR REVIEW
5	21.04.12	PRELIMINARY FOR REVIEW
6	21.04.20	PRELIMINARY FOR REVIEW
7	21.04.23	PRELIMINARY FOR REVIEW
8	21.04.30	PRELIMINARY FOR REVIEW
9	21.07.01	PRELIMINARY FOR REVIEW
10	21.07.19	RELEASE FOR DEVELOPMENT PERMIT
11	21.09.22	FOR REVIEW

project title  
**ALDUS RESIDENCE**  
136 RITCHIE AVE.  
NARAMATA, B.C.

dwg. title  
**SITE PLAN**

dr: DJ date: 2021.09.22  
ch: NG scale: 3/16" = 1'-0"

COPYRIGHT  
This drawing and design are copyrighted and considered intellectual property of Norman Goddard Architecture. No part of this drawing may be reproduced without written permission from the architect.  
sheet no.  
**A100.0**

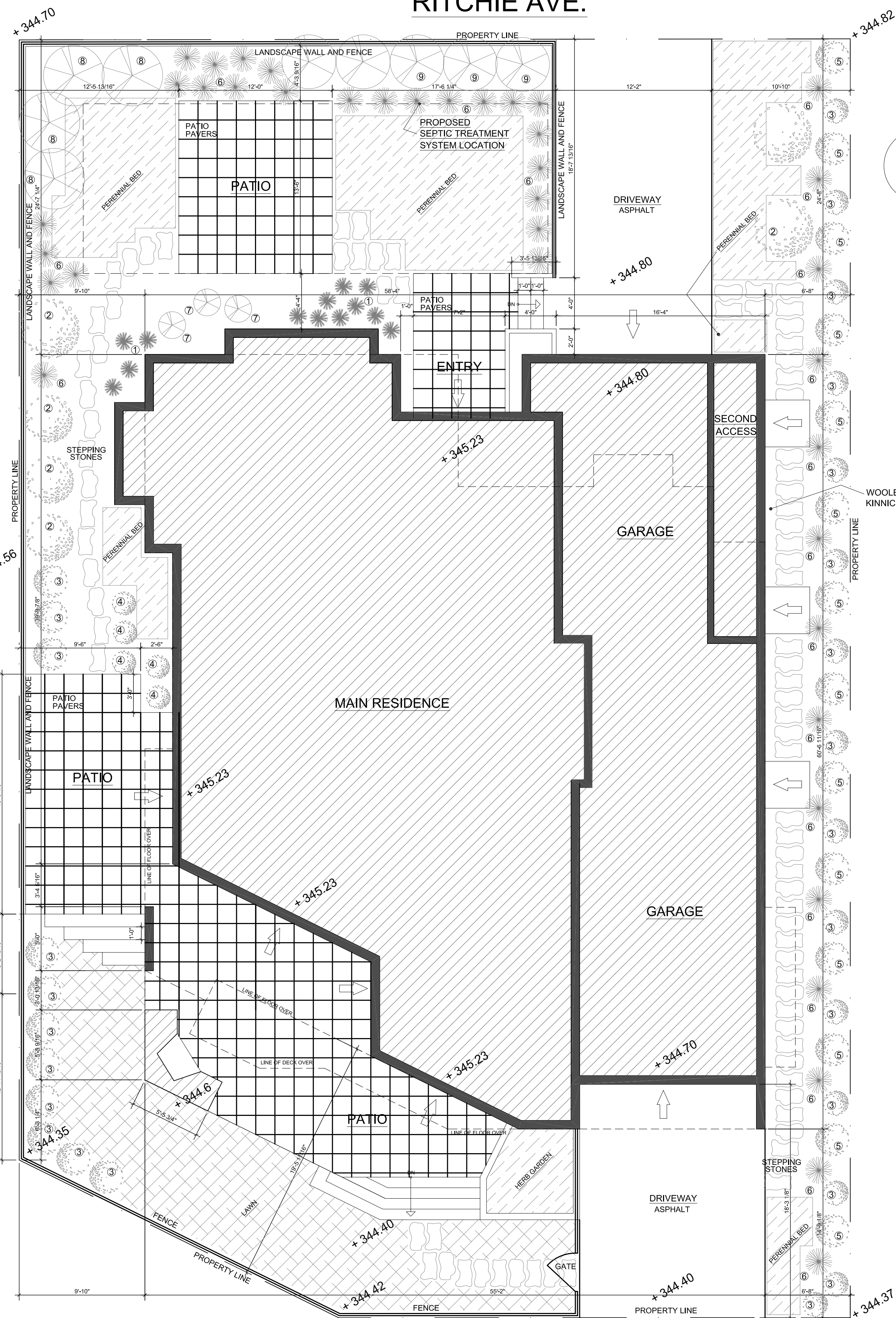


**NORMAN  
GODDARD**  
architecture + design

209-212 Main Street  
Penticton  
British Columbia  
V2A 5B2  
250-770-1104

no.	date	revision
1	21.03.10	PRELIMINARY FOR REVIEW
2	21.03.26	PRELIMINARY FOR REVIEW
3	21.03.30	PRELIMINARY FOR REVIEW
4	21.03.31	PRELIMINARY FOR REVIEW
5	21.04.12	PRELIMINARY FOR REVIEW
6	21.04.20	PRELIMINARY FOR REVIEW
7	21.04.21	PRELIMINARY FOR REVIEW
8	21.07.19	RELEASE FOR DEVELOPMENT PERMIT
9	21.09.22	FOR REVIEW
10		
11		

RITCHIE AVE.



PROPOSED PERENNIAL BEDS  
TO BE PLANTED WITH A SELECTION  
OF THE FOLLOWING:

- CORN FLOWER
- EUPHORBIA
- GARDEN PHLOX
- HEUCHERA
- MARGUERITE DAISY
- RUBECKIA
- SALVIA
- SEDUM
- SHASTA DAISY

LARGER GROWTH PLANTS TO BE LOCATED  
CLOSER TO THE BUILDING/FENCES WITH  
SMALLER GROWTH PLANTINGS TO BE  
INTERSPERSED AND TOWARDS THE  
INTERIOR OF THE PROPERTY

LANDSCAPE COVERAGE MEDIUM  
FOR PLANTING AREAS  
IS TO BE A BLACK BARK MULCH  
OVER A LAYER OF LANDSCAPE FABRIC

- 1 ORNAMENTAL GRASSES
- 2 HAWTHORNE
- 3 CEDARS
- 4 ROSES
- 5 JUNIPERS
- 6 CARL FORESTER GRASSES
- 7 MOCK ORANGE SHRUB
- 8 JAPANESE MAPLES
- 9 RED OZIER DOGWOOD

LANE

1 LANDSCAPE-PLAN  
A-100.1 3/16"=1'-0"

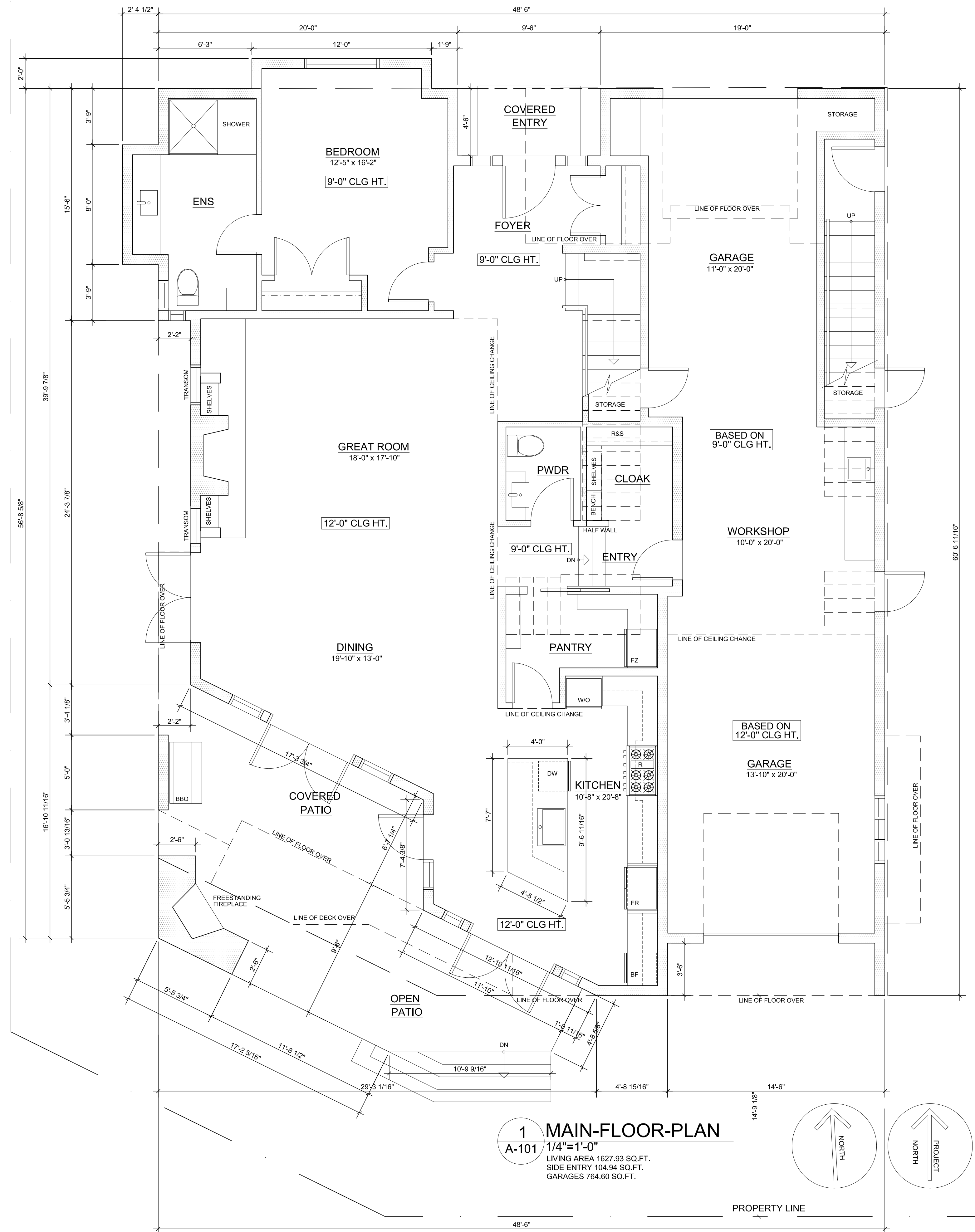
project title  
**ALDUS RESIDENCE**  
136 RITCHIE AVE.  
NARAMATA, B.C.

dwg. title  
**LANDSCAPE PLAN**

dr: DJ date: 2021.09.22  
ch: NG scale: 3/16" = 1'-0"

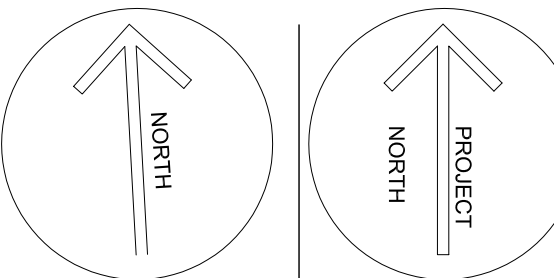
COPYRIGHT  
This drawing and design are copyrighted and considered intellectual property of Norman Goddard Architecture. No part of this drawing may be reproduced without written permission from the architect.

sheet no.  
**A100.1**

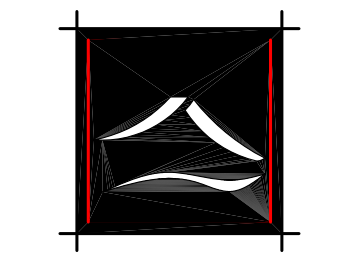


**1 MAIN-FLOOR-PLAN**  
**A-101**

1/4" = 1'-0"  
 LIVING AREA 1627.93 SQ.FT.  
 SIDE ENTRY 104.94 SQ.FT.  
 GARAGES 764.60 SQ.FT.



PROPERTY LINE



**NORMAN  
 GODDARD**  
 architecture + design

209-212 Main Street  
 Penticton  
 British Columbia  
 V2A 5B2  
 250-770-1104

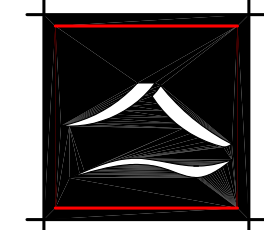
no.	date	revision
1	21.03.10	PRELIMINARY FOR REVIEW
2	21.03.26	PRELIMINARY FOR REVIEW
3	21.03.30	PRELIMINARY FOR REVIEW
4	21.03.31	PRELIMINARY FOR REVIEW
5	21.04.12	PRELIMINARY FOR REVIEW
6	21.04.20	PRELIMINARY FOR REVIEW
7	21.04.23	PRELIMINARY FOR REVIEW
8	21.04.30	PRELIMINARY FOR REVIEW
9	21.07.01	PRELIMINARY FOR REVIEW
10	21.07.19	RELEASE FOR DEVELOPMENT PERMIT
11	21.09.22	FOR REVIEW

project title  
**ALDUS RESIDENCE**  
 136 RITCHIE AVE.  
 NARAMATA, B.C.

dwg. title  
**MAIN FLOOR PLAN**

dr: DJ      date: 2021.09.22  
 ch: NG      scale: 1/4" = 1'-0"

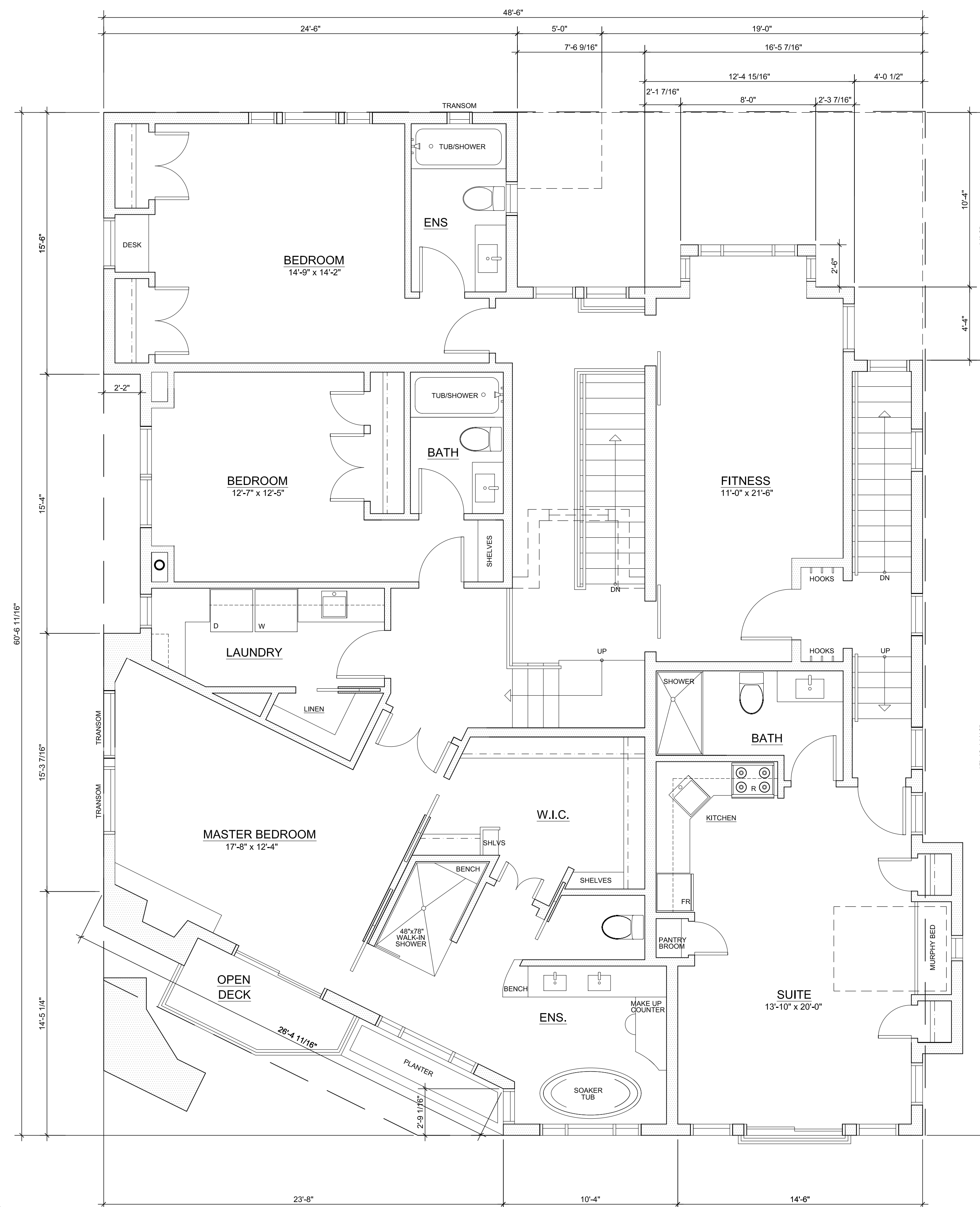
COPYRIGHT  
 This drawing and design are copyrighted and considered intellectual property of Norman Goddard Architecture. No part of this drawing may be reproduced without written permission from the architect.  
 sheet no.  
**A101.0**



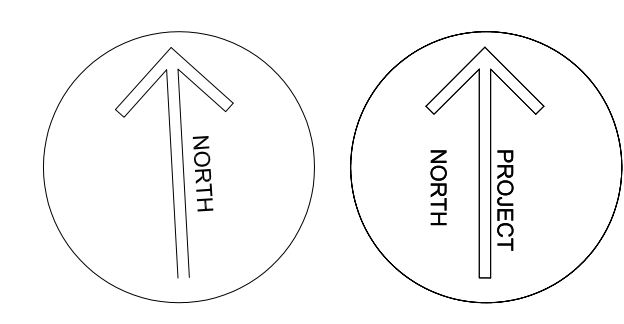
**NORMAN  
GODDARD**  
architecture + design

209-212 Main Street  
Penticton  
British Columbia  
V2A 5B2  
250-770-1104

no.	date	revision
1	21.03.10	PRELIMINARY FOR REVIEW
2	21.03.26	PRELIMINARY FOR REVIEW
3	21.03.30	PRELIMINARY FOR REVIEW
4	21.03.31	PRELIMINARY FOR REVIEW
5	21.04.12	PRELIMINARY FOR REVIEW
6	21.04.20	PRELIMINARY FOR REVIEW
7	21.04.23	PRELIMINARY FOR REVIEW
8	21.04.30	PRELIMINARY FOR REVIEW
9	21.07.01	PRELIMINARY FOR REVIEW
10	21.07.19	RELEASE FOR DEVELOPMENT PERMIT
11	21.09.22	FOR REVIEW



**1 SECOND-FLOOR-PLAN**  
A-102 1/4"=1'-0"  
LIVING AREA 1940.71 SQ.FT.  
SUITE AREA 551.06 SQ.FT.



project title  
**ALDUS RESIDENCE**  
136 RITCHIE AVE.  
NARAMATA, B.C.

dwg. title  
**SECOND FLOOR PLAN**

dr: DJ date: 2021.09.22  
ch: NG scale: 1/4" = 1'-0"

COPYRIGHT  
sheet no.  
**A102.0**