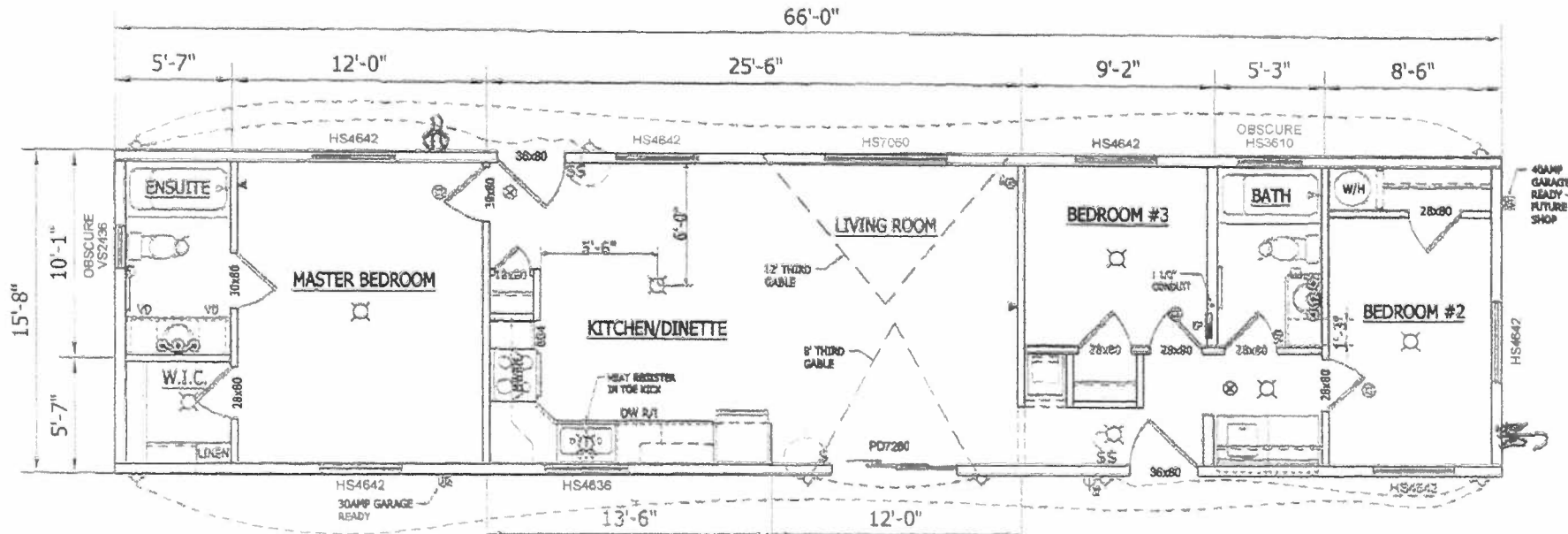


NOTE:

1. LINO THROUGHOUT
2. FLAT CEILING THROUGHOUT
3. 100 LB ROOF DESIGN LOAD
4. CUSTOMER TO CONFIRM SUFFICIENT SPACE REQUIRED FOR CUSTOMER-SUPPLIED APPLIANCES.



- MW = MICROWAVE
- TR = TRASH TRASH
- BD = BEDDING
- LS = LAZY SUSAN
- VD = VANITY DRAWER
- MWRN = MIRROR
- RAC = REC. MED. CAB.
- EP = ELECTRICAL PAN
- PH = PHONE CAB.
- PC = PREEVE CAB.
- PR = PRESERVE PHONE
- HSB = HUSB. BATH
- RS = ROSTER
- SR = SWITCHED REEP
- ER = EXTERIOR REEP
- SW = SWITCH
- 3W = 3 WAY SWITCH
- EL = EXTERIOR LIGHT
- CL = CEILING LIGHT
- DH = DUAL HEAD DIM.
- ED = EMERGENCY COMB.
- SL = SLEEPING LIGHT
- FL = FLUORESCENT
- UH = UNDERCAB HLD.
- CF = CEILING FAN
- LC = LIGHT COMBO
- VL = VANITY LIGHT
- SL = SCORNE LIGHT
- BF = BATH FAN
- CS = COT SACKS CON.
- SA = SMOKE ALARM
- DC = DOOR CHIMES
- EDC = EXT. DOOR CHIM.
- J.B. = J.B. FLOOR
- J.S. = J.S. BATTIE
- CP = CABLE PHONE
- FF = FROST FREE TA.
- PL = PLUMBING
- WH = WATER HEATER
- W = WASHING MACHINE



CLIENT:
JENKINS
 COUNTRYSIDE MANUFACTURED HOMES

TITLE:
CONFIRMATION DRAWING Floor Plan

MODEL:
 LC-888

SERIAL #:
 -

DATE	REVISION DESCRIPTION	BY
OCT. 22, 2021		

PRODUCTION #:
SR003119

DWG #:
CF1

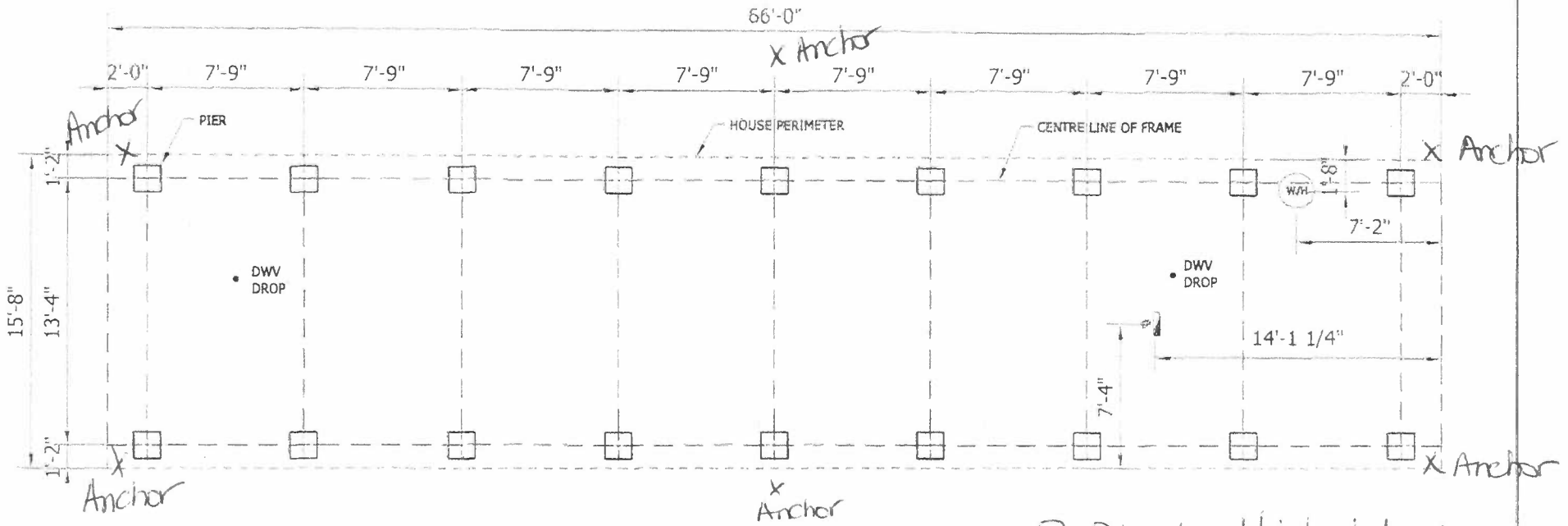
Please Sign and Return in 1 Day

X Affix

NOTES:

- CONTRACTOR TO VERIFY ALL MEASUREMENTS. ANY ERROR OR OMISSIONS ARE TO BE REPORTED TO SRI HOMES BEFORE CONSTRUCTION BEGINS.
- SITE PREPARATION TO COMPLY WITH THE CURRENT C.S.A. Z-240.10.1
- MAX. SPAN OF 8'-6" FROM CENTER OF PIERS TO A MAX. 175 lb GROUND SNOW LOAD. REFER TO PERIMETER BLOCKING CHART FOR SOME HEAVY SNOW LOAD HOMES.
- FOR SECTIONAL HOMES ONLY - EXTRA PIERS ARE REQUIRED AT MATEWALL OPENINGS GREATER THAN 4'-0" AS PER BLOCKING DIAGRAM.
- DWV DROP LOCATIONS & QUANTITY MAY VARY, REFER TO AS BUILT PLUMBING DRAWING SHIPPED IN THE HOME WITH OTHER SET-UP INSTRUCTIONS.

Perimeter Blocking Required for the following:			
Width	Snow Load	Perimeter Blocking - Sgl Rim	Perimeter Blocking - Dbl Rim
15'-8"	82 PSF	First @ 3'-4" & 3'-5" oc after	First @ 3'-6" & 7'-0" oc after
15'-8"	100 PSF	First @ 2'-0" & 4'-8" oc after	First @ 3'-9" & 6'-6" oc after



blocking height as per bc building code

3 Blocks High Maximum
6 Anchors (no more than 24" from grade)



CLIENT:
JENKINS
COUNTRYSIDE MANUFACTURED HOMES

TITLE:
BLOCKING DIAGRAM

MODEL:
LC-868

SERIAL #

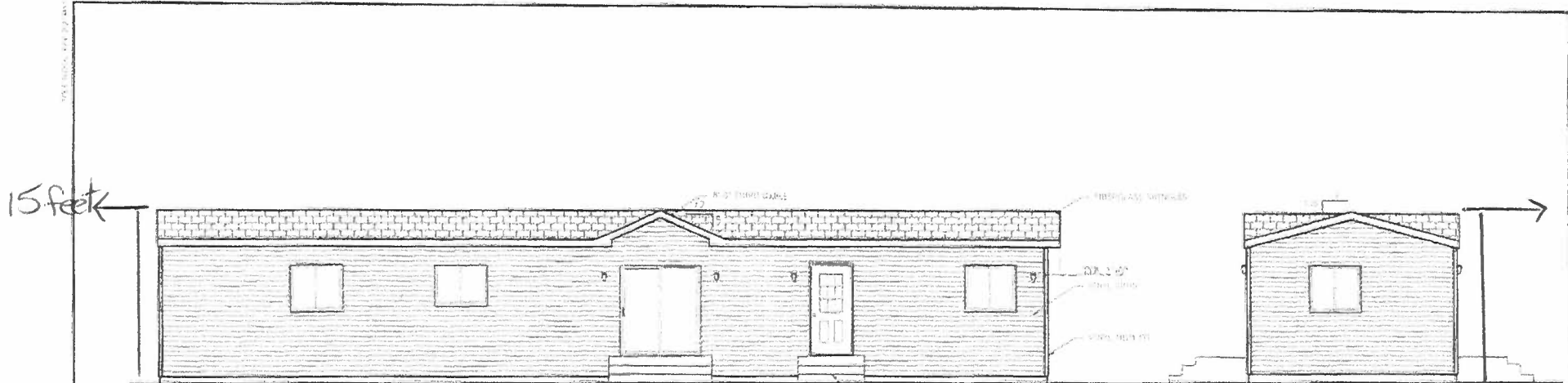
DWG BY:	DATE	REVISION DESCRIPTION	BY
DC	OCT. 22, 2021		
NTR			
SRO03119.dwg			

PRODUCTION #
SR003119

DWG #:
BL

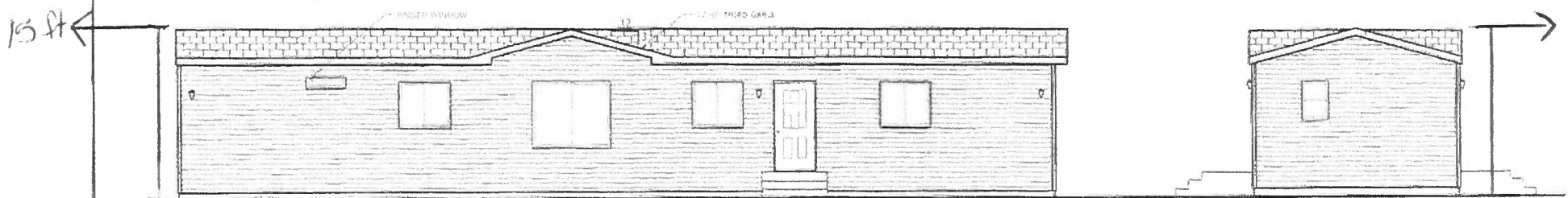
2ft x 2ft concrete pads/footings on prepped surface (prepared by osayoo/afg)
as per RDS diagram.

A277



FRONT ELEVATION
SCALE: NTS

RIGHT ELEVATION
SCALE: NTS



REAR ELEVATION
SCALE: NTS

LEFT ELEVATION
SCALE: NTS

PRINTED: 2021-11-02 01:03



CLIENT
JENKINS
LAKE COUNTRY MODULAR & MAXIMUM

TITLE
ELEVATIONS

MODEL
LC-868

DATE
SCALE
BY



DATE REVISION DESCRIPTION

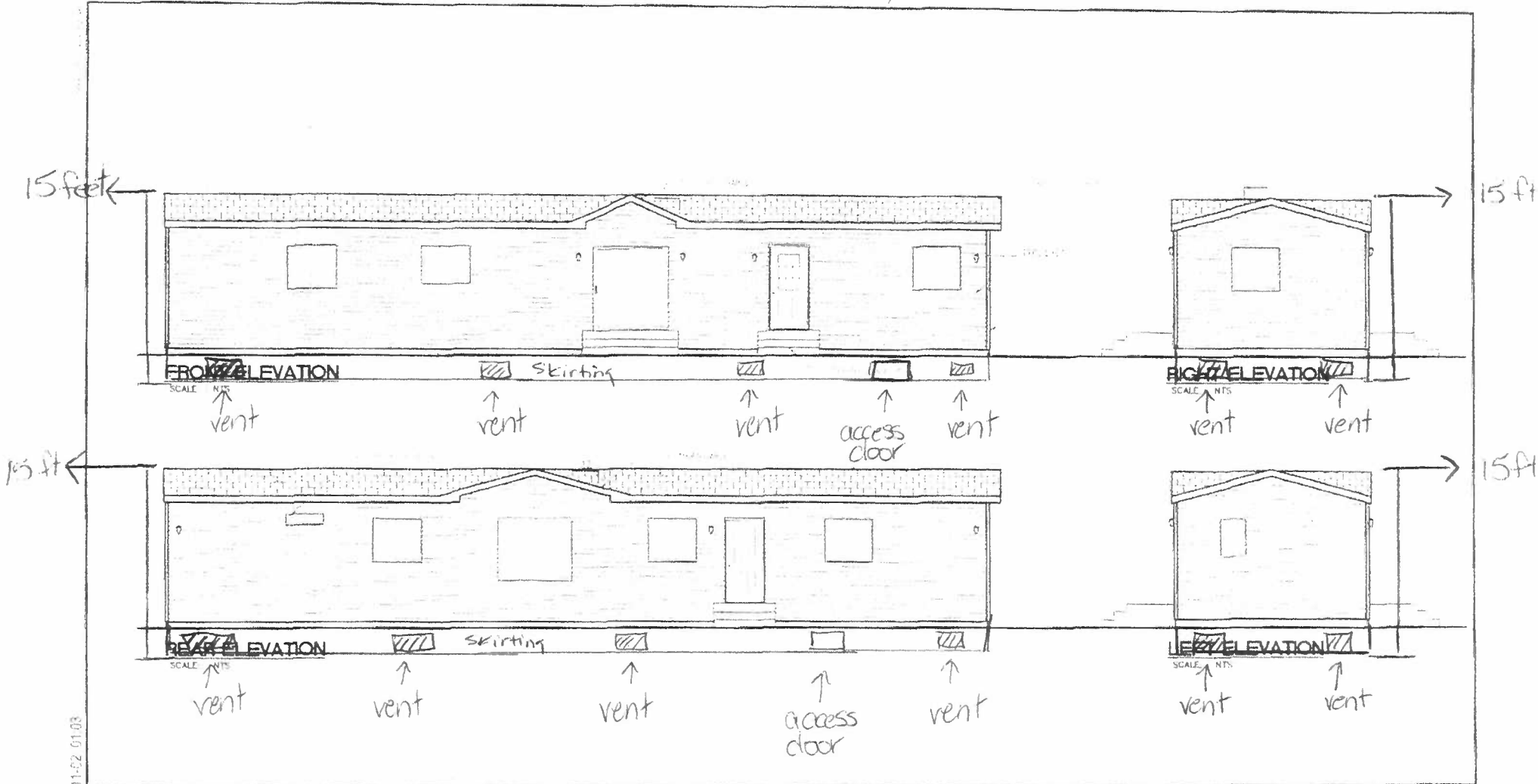
A277

PRODUCTION #
SR003119

DWG #
EV

SKIRTING VENTS (x12) ACCESS DOORS (x2)

-  vent
-  20" x 28" access door



PRINTED: 2021-11-02 01:03



CLIENT
JENKINS
LAKE COUNTRY MODULAR & MAXIMUM

TITLE
ELEVATIONS
LC-868

PROJECT NO.
SR003119

REV.
EV