

# REGIONAL DISTRICT OF OKANAGAN-SIMILKAMEEN

## RCMP Regional Operations

January 2020



### Fact Sheet

---

#### RCMP in Canada

The Royal Canadian Mounted Police (RCMP) is the national police force in Canada. The RCMP is organized under the authority of the RCMP Act and is headed by the Commissioner, who, under the direction of the Minister of Public Safety Canada, has the control and management of the Force and all public safety matters. The RCMP mandate is multifaceted and includes preventing and investigating crime, maintaining peace and order, and enforcing laws.

#### Regional Policing

The Province of British Columbia has entered into an agreement with Canada for the RCMP to serve as both the provincial police force and municipal police force. The costs of contract policing are shared in recognition of the mutual benefits of this policing model.

- Regional Districts and municipalities under 5,000 persons fall under the Provincial Policing contract.
- Under the BC Police Act, municipalities over 5,000 persons are responsible for their own policing and may choose to form their own independent municipal police department, contract with an existing police department, or contract with the provincial government for RCMP municipal police services.
- While the Regional District can lobby for a specific number of Provincial police officers, the Province determines the appropriate number assigned to each detachment.
- The Regional District funds a Crime Stoppers/Community Policing officer working out of the Penticton RCMP detachment.
- The Regional District provides subsidies for Victim Services programs.

The Officer in Charge (OIC) of Penticton South Okanagan Similkameen regional detachment reports to the RDOS Board of Directors on a quarterly basis, and provides feedback and input on areas of interest in the region. This includes regional statistics and detachment priorities. The OIC provides oversight to the six RCMP detachments within the RDOS, including the nine Electoral Areas.

#### Policing Costs

The rural Police Tax is set and collected by the Province of British Columbia. The total rural Police Tax collected from RDOS Electoral Areas for 2019 is \$778,219.12.



Serving the citizens of the Okanagan-Similkameen since 1966.

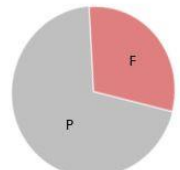
[www.rdos.bc.ca](http://www.rdos.bc.ca)

Police Tax	Jurisdiction	Includes
\$328,418.64	Oliver Rural	Rural Osoyoos, Kaleden, Ok Falls, Twin Lakes, Apex
\$221,340.88	Penticton Rural	Carmi, Naramata, West Bench
\$127,022.63	Keremeos Rural	Cawston, Hedley
\$ 85,125.81	Princeton Rural	Tulameen, Coalmont, East Gate
\$ 16,311.16	Summerland Rural	Faulder, Meadow Valley

**NOTE: Police Tax jurisdictions are set by the Province of British Columbia**

# COST SHARING

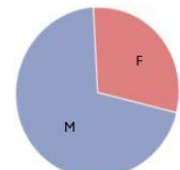
The costs of contract policing are shared in recognition of the mutual benefits of this policing model.



**UNINCORPORATED AREAS & MUNICIPALITIES UNDER 5,000**

30% Federal & 70% Provincial

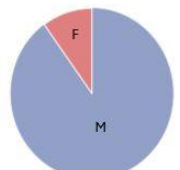
As per the PPSA the provincial government pays 70% of the cost-base described in the Agreement and the federal government pays the remaining 30%.  
A portion of the provincial cost is recovered through the Police Tax.



**MUNICIPALITIES BETWEEN 5,000 – 14,999**

30% Federal & 70% Municipal

The terms of the MPSA and the MPJA require that municipalities between 5,000 and 14,999 population pay 70% of the RCMP cost-base, while municipalities with 15,000 population and over pay 90%. The remaining 30% and 10%, respectively, are subsidized by the federal government. Municipalities, who elect to have their own police force are responsible for 100% of policing costs, such as Abbotsford Police Department.  
To pay for their share of police service costs, municipalities over 5,000 rely on municipal property taxation.



**MUNICIPALITIES 15,000 AND OVER**

10% Federal & 90% Municipal

### Indigenous Communities

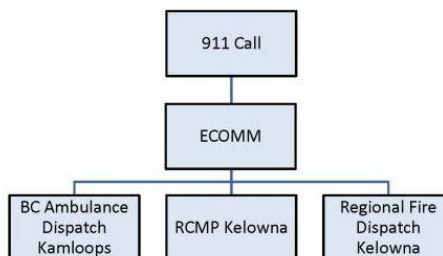
Through the First Nations Policing (FNP) Program, the federal government and BC provide funding to support policing services that are professional, dedicated and responsive to the First Nations (Indigenous) communities they serve.

### 9-1-1

The Kelowna RCMP dispatch facility provides 9-1-1 service to the RDOS and other regions.

#### Regional District of Okanagan-Similkameen

#### Emergency 911 Call Routing

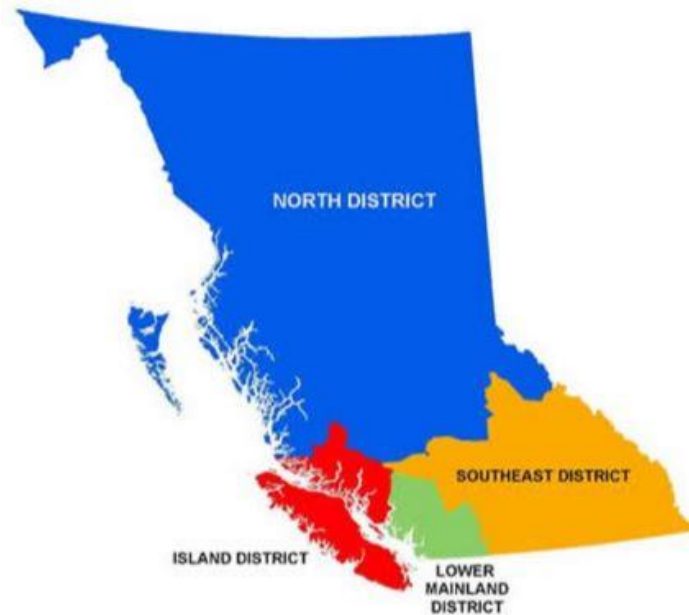


### **Community Active Support Table (CAST)**

The CAST program brings together police, social services, Interior Health as well as other provincial agencies and local government to help the most vulnerable people in our communities. The multi-agency approach is designed to identify risks before they occur. CAST has been operating in Penticton since 2018 and is anticipated to be expanded to include other RDOS communities in the future.

### **Southeast District**

Southeast District (SED) shares a border with Alberta and the United States and is primarily situated among mountains and rugged terrain. Southeast District stretches from Clearwater in the north, to Osoyoos in the south, and from Sparwood to the east and Lillooet Detachment to the west.



### **Detachment**

A detachment is an identifiable police facility with a single commander which may serve one or more provincial or municipal communities, for example; Penticton Detachment.

### **Community Police Office (CPO)**

A CPO is an identifiable police facility which is part of a larger structure especially when geographic distances may dictate the need for additional infrastructure to service the jurisdiction.

### **Integrated Detachment**

An integrated detachment is two or more municipal or provincial RCMP units working in the same building. The members from each unit in an integrated detachment report to the same Detachment Commander and generally provide services to the combined municipal and provincial policing areas.

### **Regional Detachment**

A regional detachment will manage integrated and independent detachments in an area.

## **Contact Information**

### **Emergencies: 9-1-1**

#### **Keremeos RCMP detachment: (non-emergency) 250-499-5511**

2920 Highway 3, Keremeos, BC

This detachment serves: **Keremeos, Olalla, Cawston, Ashnola**

<http://www.rcmp-grc.gc.ca/detach/en/d/191#Keremeos>

#### **Penticton RCMP detachment: (non-emergency) 250-492-4300**

1168 Main Street, Penticton, BC

This detachment serves: **Faulder, Kaleden, Naramata, Okanagan Falls, Penticton**

<http://www.rcmp-grc.gc.ca/detach/en/d/184#Penticton>

#### **Princeton RCMP detachment: (non-emergency) 250-295-6911**

200 Highway 3 E, Princeton, BC

This detachment serves: **Princeton, East Gate, Manning Park, Hedley, Coalmont, Tulameen, Bankeir**

<http://www.rcmp-grc.gc.ca/detach/en/d/189#Princeton>

#### **South Okanagan RCMP detachment:**

##### **Oliver: (non-emergency) 250-498-3422**

425 Similkameen Ave, Oliver, BC

##### **Osoyoos: (non-emergency) 250-495-7236**

16 Eagle Crt., Osoyoos, BC

This detachment serves: **Oliver, Osoyoos, Bridesville, Osoyoos First Nation Reserve, Mount Baldy**

[www.rcmp-grc.gc.ca/detach/en/d/193#Osoyoos](http://www.rcmp-grc.gc.ca/detach/en/d/193#Osoyoos)

#### **Summerland RCMP detachment: (non-emergency) 250-494-7416**

9101 Pineo Crt., Summerland, BC

This detachment serves: **Summerland**

<http://www.rcmp-grc.gc.ca/detach/en/d/200#Summerland>

#### **BC RCMP: 778-290-3100**

<http://bc.rcmp-grc.gc.ca/ViewPage.action?siteNodeId=14&languageId=1&contentId=-1>

Please be advised: information is subject to change without notice.

---

#### **RDOS: 250-492-0237**

101 Martin Street, Penticton, BC

[www.rdos.bc.ca](http://www.rdos.bc.ca)

