



WILDFIRE UPDATE

71W22KC - Okanagan Complex

FIRE SIZE:
 Thomas Creek (K51794): 6558 ha (estimate)
 Brenda Creek (K51924): 450 ha (estimate)
 White Rock Lake (K61844) 3000 (estimate)

FIRE STATUS:
 Out of Control

THOMAS CREEK WILDFIRE (K51794)

This fire was first discovered on Sunday, July 11, 2021 and is approximately 5 kilometres northeast of Okanagan Falls.

CONDITIONS:

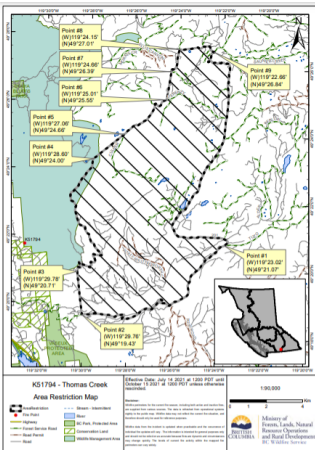
Fire behavior observed yesterday was low to moderately vigorous surface fire. The fire is visible from local communities.

OBJECTIVES:

Ground crews and heavy equipment continue to work on contingency guard and are working with crews to contain excursions along the 201 road. The protection of life and property along the south flank is the main priority today.

AREA RESTRICTION :

In the interest of public and responder safety, an Area Restriction was implemented for the Thomas Creek Wildfire area on July 14, 2021. More information is available, including a map at: www.bcwildfire.bc.ca



This Area Restriction is expected to expand on July 20 to include the 201 Road since burned over trees on both sides of the road are susceptible to falling down over the road and adjacent areas.



RESOURCES:

- Firefighters – 23
- Heavy Equipment - 23
- Helicopters – 10 assigned

EVACUATION ALERTS & ORDERS:

The Regional District of Okanagan-Similkameen (RDOS) has issued an Evacuation Alert for 704 properties in Electoral Area "D." More information is available here: <https://www.rdos.bc.ca/>

ADDITIONAL CONTACT INFORMATION:

71W22KC - Okanagan Complex Information Section
 Telephone: 250-230-3670 | Email: KFCInfo@gov.bc.ca



BRENDA CREEK WILDFIRE (K51924)

This fire was first discovered on Wednesday, July 14, 2021 and is an interface fire.

CONDITIONS:

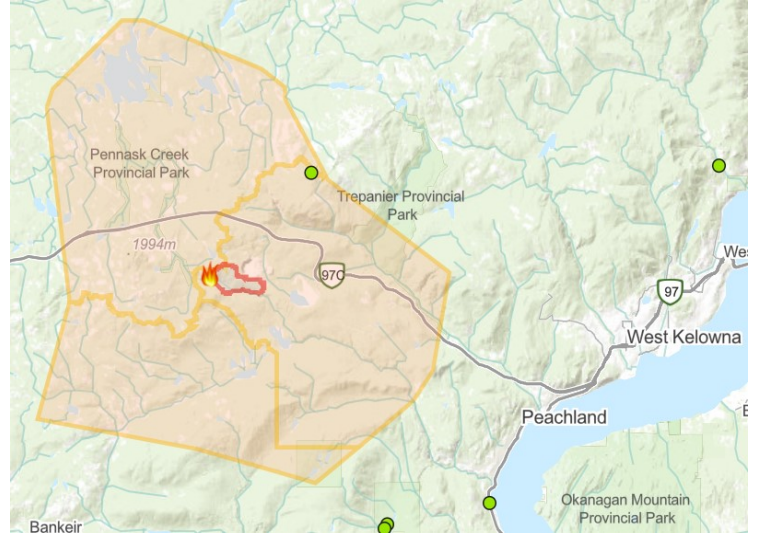
Ongoing dry conditions has kept forest fuels susceptible to spot fires. These site conditions, combined with increased winds from the east, increased fire behaviour in the northwest corner on July 19.

OBJECTIVES:

Structural protection remains in place on high value resources. Good progress was made yesterday on guard line reinforcement. Crews will continue to reinforce these guard lines with small, planned hand ignitions over the next few days, as conditions allow. Six firefighters continue to remain on site overnight to patrol the fire and locate lines for heavy equipment for the next day shift.

STRUCTURAL PROTECTION:

1 structure protection specialist, 1 task force leader, 1 structure protection unit (5 crew) , 1 mass water delivery unit (3 crew) and 1 structure protection trailer are on site. They are supported by 16 firefighters from 4 different local fire departments, who are making good progress on extinguishing fire along the power line.



The Brenda Creek Wildfire is approximately 40 kilometers west of West Kelowna, south of the Okanagan Connector.
Source: [BC Wildfire Dashboard](#)

RESOURCES:

- Firefighters – 40**
- Heavy Equipment - 11**
- Helicopters – 2 assigned**

EVACUATION ALERTS, ORDERS & AREA RESTRICTIONS:

The [Regional District of Okanagan-Similkameen](#) (RDOS) has issued an Evacuation Order for 43 properties. An Evacuation Alert has also been issued for Eneas Lakes Provincial Park.

The [Thompson-Nicola Regional District](#) (TNRD) has issued an Evacuation Alert for three properties located in Electoral Area "M."

The Regional District of Central Okanagan (RDCO) has issued an Evacuation Alert for properties, three recreational camping areas and Crown land within West Electoral Area, south of Highway 97C and northwest of Peachland. Please contact the [Regional District Central Okanagan](#) for more information.

An Area Restriction is in effect as of noon on July 17, 2021. More information is available, including a map at: www.bc.wildfire.ca



Equipment task force ringing a spot fire on the SE corner of the Brenda Creek Wildfire.

WHITE ROCK LAKE WILDFIRE (K61844)

This fire was first discovered on Tuesday, July 13, 2021 and is an interface fire.

CONDITIONS:

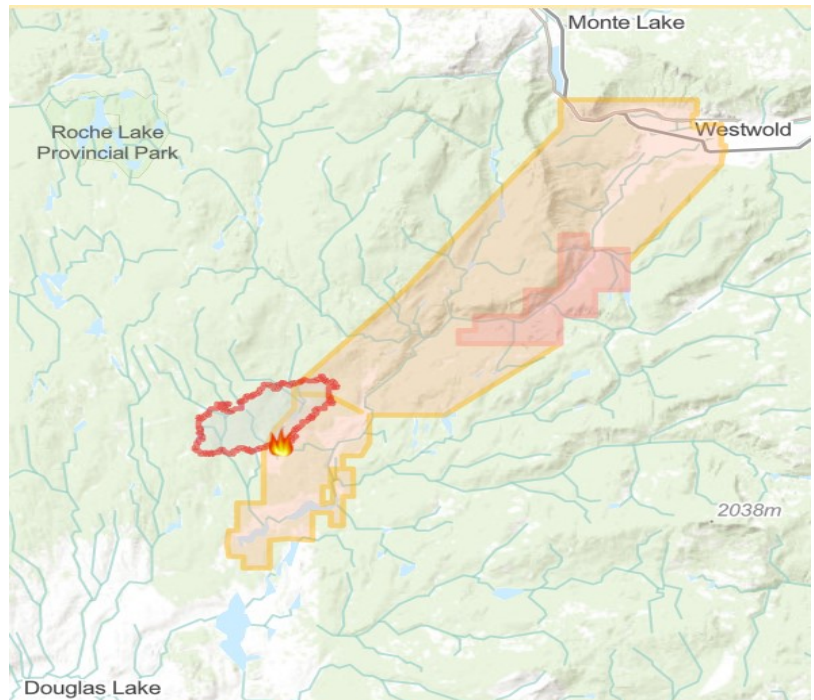
On July 19, a narrow excursion emerged from the mapped boundary to the northeast.

There have been impacts to the hydro line in the area, with multiple outages occurring due to the smoke on July 18.

Beginning July 19, this fire will be under the command of the Incident Management Team managing the Okanagan complex.

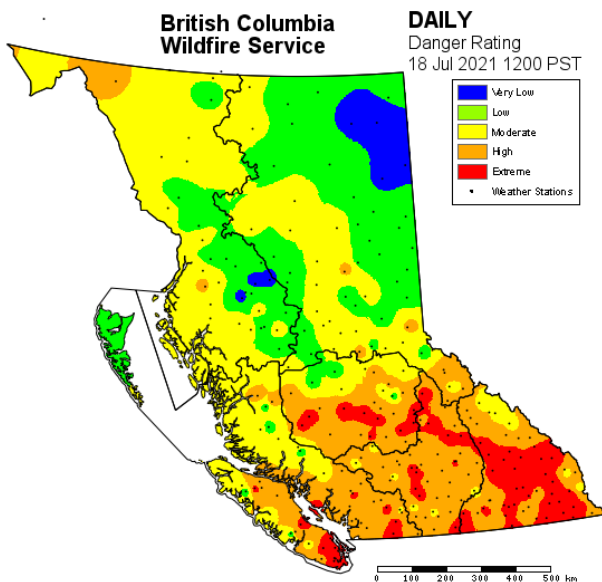
OBJECTIVES:

Personnel on site are responding to moderate fire behavior that continues to be driven by winds. BC Wildfire Service personnel and aerial resources continue to work with industry partners on this incident.



The White Rock Lake Wildfire is approximately 56 kilometers northeast of Merritt. NB the fire perimeter in red is from July 16, 2021.

FIRE DANGER RATING



RESOURCES:

Personnel – 12 (BCWS, local fire departments and the RCMP)

Heavy Equipment - 11

Helicopters – 3 assigned

Structural Protection Units—1

EVACUATION ALERTS, ORDERS & AREA RESTRICTIONS:

The Thompson-Nicola Regional District (TNRD) has implemented an Evacuation Alert for 25 properties in Electoral Area “N”. Please contact the Thompson-Nicola Regional District for more information: <https://www.tnrd.ca/>

The [Thompson-Nicola Regional District](https://www.tnrd.ca/) (TNRD) has issued an Evacuation Alert for 13 properties.