



71W22KC - Okanagan Complex

FIRE SIZE/STATUS:	
Nk'Mip Creek (K52061) 16,005 (estimate)	Out of Control
Thomas Creek (K51794): 10,280 ha (estimate)	Out of Control
Brenda Creek (K51924): 871 ha (estimate)	Being Held

THOMAS CREEK WILDFIRE (K51794)

This fire was first discovered on Sunday, July 11, 2021 and is approximately 5 kilometres northeast of Okanagan Falls.

CONDITIONS:

The fire remains active on the northwest corner around the Derenzy Drainage and on the northeast side by Allendale Lake.

OBJECTIVES:

Crews continue to make good progress along the south guard and will continue to look for opportunities to complete additional small hand ignitions along these guards. This technique is used to remove unburnt fuels along control lines to help further secure the fire perimeter.

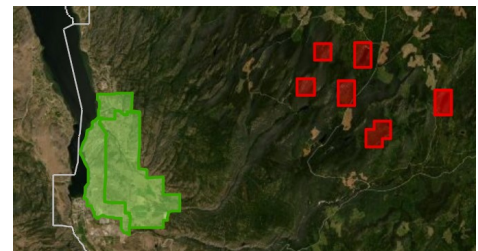
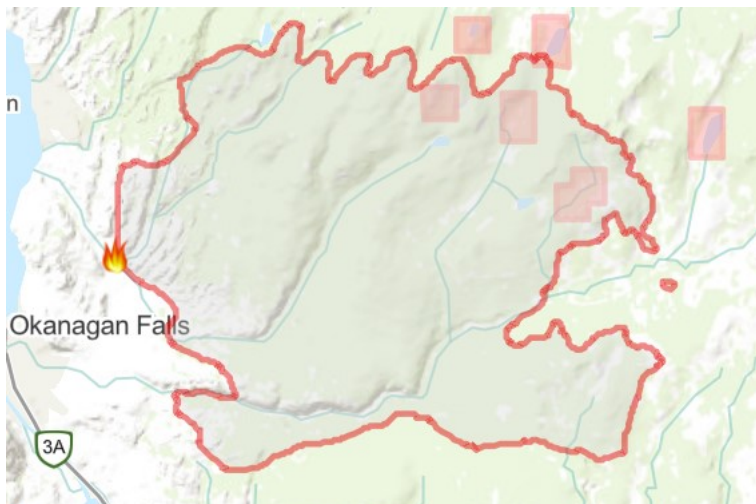
RESOURCES:

- Firefighters** – 22
- Military Personal** – 35
- Danger tree fallers/assessors** – 2
- Heavy Equipment** – 22
- Helicopters** – 3 assigned

EVACUATION ALERTS, ORDERS & AREA RESTRICTIONS:

As a result of ongoing suppression efforts and favourable weather conditions, the BC Wildfire Service has recommended changes in evacuation order and alert areas to local governments.

For the Thomas Creek Wildfire, visit the Regional District of Okanagan-Similkameen website for more details: <https://www.rdos.bc.ca/>



An Area Restriction was implemented on July 21, 2021 and further updated on July 24, 2021. More information is available at: www.bcwildfire.bc.ca.

Source: [BC Wildfire Dashboard](#)

ADDITIONAL CONTACT INFORMATION:

71W22KC - Okanagan Complex Information Section

Telephone: 250-230-3670 | Email: BCWS.Okanagan.Complex.Info@gov.bc.ca





BRENDA CREEK WILDFIRE (K51924)

This fire was first discovered on Wednesday, July 14, 2021 and is an interface fire.

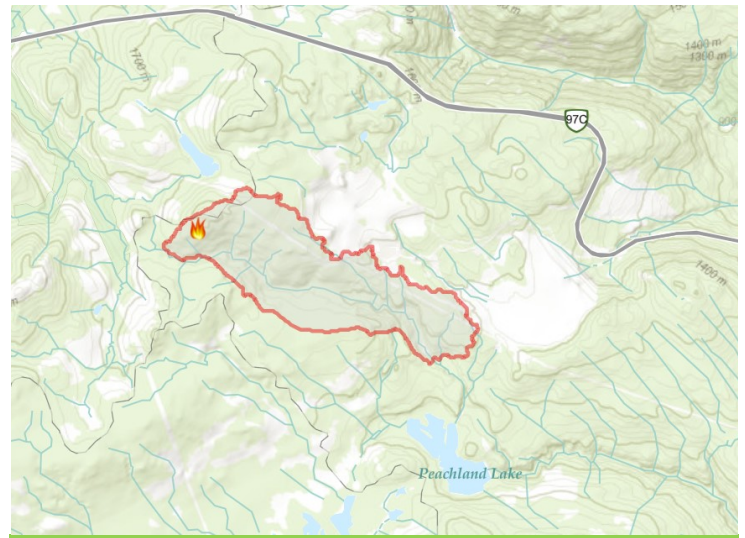
CONDITIONS:

As of August 5, The Brenda Creek wildfire now classified as **Being Held**. This term indicates that (with the resources currently committed to the fire) sufficient suppression action has been taken that the fire is not likely to spread beyond existing or predetermined boundaries under the prevailing and forecasted conditions. Learn more about stages of control: <https://www2.gov.bc.ca/gov/content/safety/wildfire-status/about-bcws/wildfire-response/response-terminology>

With this change in status, this will be the last community bulletin article on the Brenda Creek Wildfire unless conditions change.

OBJECTIVES:

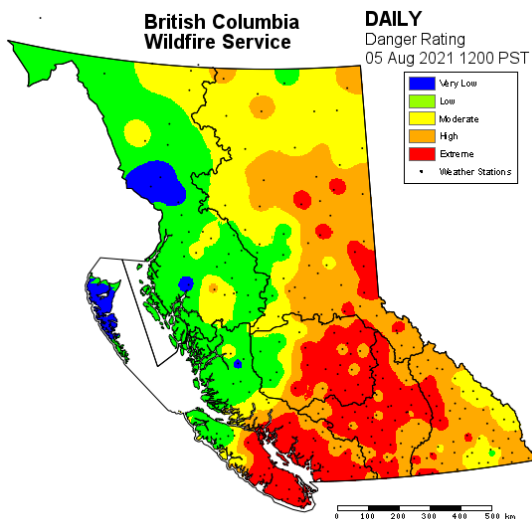
Structural Protection was demobilized yesterday on structures in the Headwater Creek area. Crews will continue to work on this fire for the next few weeks to complete mop-up activities and patrol objectives.



The Brenda Creek Wildfire is approximately 40 kilometers west of West Kelowna, south of the Okanagan Connector.

Source: [BC Wildfire Dashboard](#)

FIRE DANGER RATING



RESOURCES:

Firefighters — 36
 Danger tree fallers/assessors — 2
 Heavy Equipment — 12
 Helicopters — 3 (assigned)

EVACUATION ALERTS, ORDERS & AREA RESTRICTIONS:

The Evacuation Orders issued by the Regional District of Okanagan-Similkameen was rescinded on August 5, 2021. For more information visit: <https://emergency.rdos.bc.ca/>

The Evacuation Alert issued by the Regional District of Central was rescinded on August 5, 2021. For more information visit: <https://www.cordemergency.ca/>

In the interest of public and responder safety, an Area Restriction was implemented on July 17, 2021. More information is available at: www.bcwildfire.bc.ca.

Spot a wildfire, smoke or illegal fire activity? Call 1 800 663-5555 or *5555 on your cellphone.

Nk'Mip CREEK WILDFIRE (K52001)

This fire was first discovered 6 kilometers north of Osoyoos on July 19, 2021.

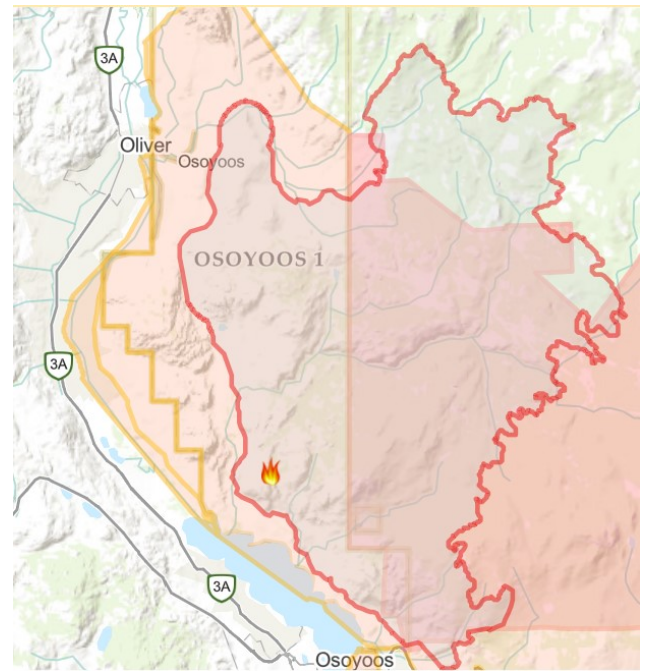
CONDITIONS:

Conditions remain warm and dry with minimum relative humidity around 20% and daily high temperature in the high 20s to low 30s. Winds are expected to be variable 5-10 km/hr in the morning and are forecast to be southwest 10-20 km/hr by the afternoon with gusts up to 30 km/hr.

OBJECTIVES:

The objectives continue to be focused on containing the fire east of Nk'Mip Rd in the west and north of Highway 3 in the south, to hold the fire's east perimeter (Mt Baldy/Sidley Meadow contingency line), and to use strategic fire guards near Camp McKinney Rd in the north.

- Operations will focus on containing the northwest and northeast corners.
- An initial attack crew is patrolling overnight to protect assets along McKinney Road.
- Properties near Mt. Baldy are being continually assessed and prepared for structural protection.
- Crews have demobilized structural protection in the Shrike Community.
- Crews are working to mop-up hot spots that were identified by an infrared scan.
- Danger tree assessments and removal will continue each day to facilitate safe crew access.



Source: [BC Wildfire Dashboard](#)

RESOURCES:

Firefighters — 145 firefighters (including 98 Mexican firefighters).

Danger tree fallers/assessors — 9

Heavy Equipment — 37

Helicopters — 6 (assigned)

Structural Protection: 1 structural protection specialist, 1 structural protection task force leader, 2 structural protection trailers and 13 firefighters from 5 fire departments are working on this fire.

EVACUATION ALERTS, ORDERS & AREA RESTRICTIONS:

As a result of ongoing suppression efforts and favourable weather conditions the BC Wildfire Service has recommended changes to local governments on the evacuation orders and alert areas.

For the Nk'Mip Creek Wildfire, visit the following websites for more information on these changes and remaining evacuation details:

- The Osoyoos Indian Band: <http://oib.ca/>
- The Regional District of Okanagan-Similkameen: <https://www.rdos.bc.ca/>

In the interest of public and responder safety, an Area Restriction was implemented on July 24, 2021. More information is available at: www.bcwildfire.bc.ca.

