

EMERGENCY OPERATIONS CENTRE (EOC)



EVACUATION ORDER *August 1, 2022, 14:00.*

Electoral Areas “G” and “I” – Keremeos Creek wildfire

Pursuant to Section 13 (1) of the BC Emergency Program Act an **Evacuation Order** has been issued by Regional District of Okanagan-Similkameen to protect the health, safety or welfare of a person or to limit damage to property due to: wildfire.

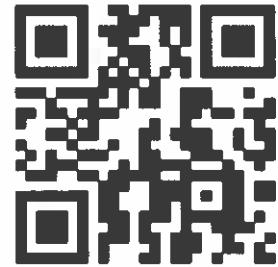
Members of the RCMP and other agencies under the direction of RCMP will be expediting this action.

The **Evacuation Order** is in effect for the following areas:

- Sheep Creek RD south
- North of Olalla
- Highway 3A

Visit the RDOS EOC website for resource links and information updates:

<https://emergency.rdos.bc.ca/resources/>



Link to Latest Updates

A handwritten signature in blue ink, appearing to read 'Bill Newell', is written over a horizontal line.

Bill Newell, EOC Director
Regional District of Okanagan-Similkameen

Schedule 1 – List of Properties

788 SHEEP CK RD	121 STAGE COACH RD	711 MCMURRAY RD
750 MCMURRAY RD	726 SHEEP CK RD	721 MCMURRAY RD
758 MCMURRAY RD	805 TOY CREEK RD	795 SHEEP CK RD
850 SHEEP CK RD	713 SHEEP CK RD	778 TOY CREEK RD
1246 HIGHWAY 3A	751 TOY CREEK RD	1778 HIGHWAY 3A
771 TOY CREEK RD	789 TOY CREEK RD	175 STAGE COACH RD
1196 HIGHWAY 3A	683 SHEEP CK RD	1760 HIGHWAY 3A
747 MCMURRAY RD	875 SHEEP CK RD	1038 HIGHWAY 3A
3051 GREEN MTN RD	648 SHEEP CK RD	105 STAGE COACH RD
649 SHEEP CK RD	1767 HIGHWAY 3A	295 PEARCE RD
1146 HIGHWAY 3A	1771 HIGHWAY 3A	299 PEARCE RD
1066 HIGHWAY 3A	1773 HIGHWAY 3A	291 PEARCE RD

Follow RDOS on Facebook Twitter YouTube LinkedIn

Website: emergency.rdos.bc.ca Email: eocinfo@rdos.bc.ca Phone: 250-490-4225

Voyent Alert! notifications – sign up for routine and emergency notifications

Issued by Director of RDOS EOC

EMERGENCY OPERATIONS CENTRE (EOC)



746 MCMURRAY RD	1786 HIGHWAY 3A	197 STAGE COACH RD
143 STAGE COACH RD	1872 HIGHWAY 3A	1750 HIGHWAY 3A
800 TOY CREEK RD	1878 HIGHWAY 3A	1754 HIGHWAY 3A
1770 HIGHWAY 3A	1910 HIGHWAY 3A	102 STAGE COACH RD
1120 HIGHWAY 3A	772 TOY CREEK RD	1920 HIGHWAY 3A
1766 HIGHWAY 3A	758 SHEEP CK RD	

YOU MUST LEAVE THE AREA IMMEDIATELY

Follow RDOS on Facebook Twitter YouTube LinkedIn

Website: emergency.rdos.bc.ca Email: eocinfo@rdos.bc.ca Phone: 250-490-4225

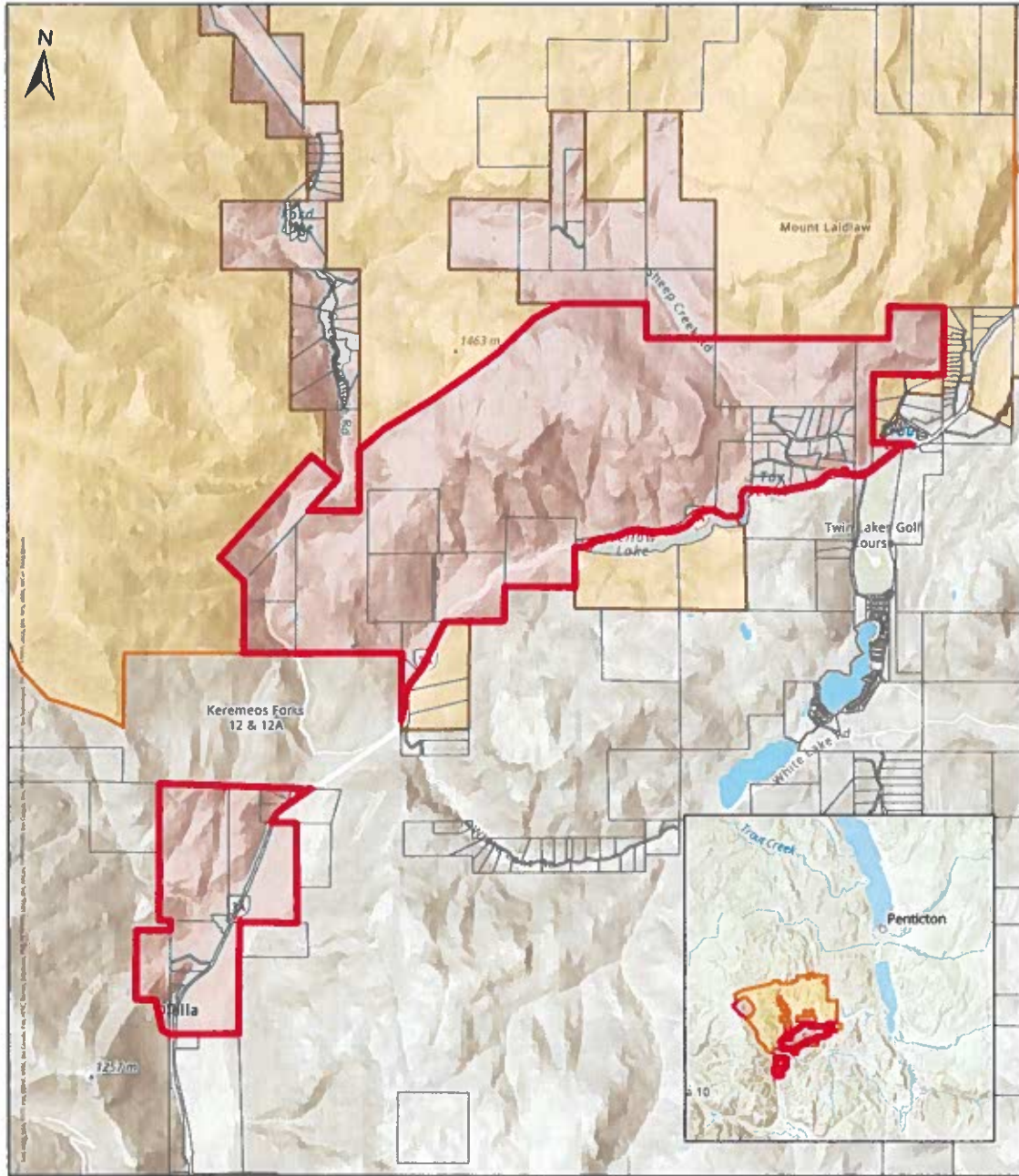
[Voyent Alert!](#) notifications – sign up for routine and emergency notifications

Issued by Director of RDOS EOC

EMERGENCY OPERATIONS CENTRE (EOC)



Schedule 2 - Evacuation Order Map



Evacuations

- Order
- Alert
- Rescind

Fire: K50863
Keremeos Creek wildfire
Evacuation Order
Sheep Creek Rd South, North of Olalla and Highway 3A
08/01/2022 @ 1400



Follow RDOS on Facebook Twitter YouTube LinkedIn
Website: emergency.rdos.bc.ca Email: eocinfo@rdos.bc.ca Phone: 250-490-4225
Voyent Alert! notifications – sign up for routine and emergency notifications
Issued by Director of RDOS EOC

EMERGENCY OPERATIONS CENTRE (EOC)

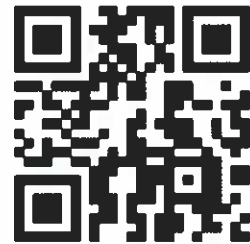


WHAT YOU SHOULD DO:

- You must leave the area **immediately**.
- Follow directions of emergency responders and travel designated or safest route available.
- **If you require transportation, please call 250-490-4231**
- Register online at ess.gov.bc.ca
- Go to **Princess Margaret Secondary, 120 Green Ave, Penticton** if you require immediate assistance
 - Due to a shortage of commercial/hotel accommodation, consider making arrangements to stay with family or friends if possible.
 - Take pets with you if you can.
 - **To access Emergency Support Services (ESS), call 250-486-1890**
- If you need transportation assistance, call **RDOS EOC: 250-490-4225**
- Gather your family; if you have room, take a neighbor or someone needing transportation.
 - Do not use more vehicles than you have to.
- Do not turn off your natural gas. FortisBC will turn off natural gas service as needed.
- Store your Firearms in accordance with Section 118 of the Firearms Act.
- Close all windows and doors.
- Close gates (latch) but do not lock.

WHAT TO TAKE:

- Critical items only if they are immediately available:
 - government-issued ID
 - medications
 - eyeglasses
 - valuable papers (e.g. insurance, credit, and mortgage information)
 - immediate care needs for dependents
- Pets in pet kennels or on leash.
 - **Pet owners and hobby farmers** with concerns for their animals *may* contact:
 - **Animal Emergency Response Team (ALERT): 250-809-7152**
 - **Commercial Farmers** who require assistance *may* contact:
 - **RDOS EOC: 250-490-4225**



[Link to Latest Updates](#)

YOU MUST LEAVE THE AREA IMMEDIATELY

At the Reception Centre – Emergency Support Service (ESS) volunteers are able to assist you to meet your basic needs by providing service for up to 72 hours. This may include coordinating food, clothing, lodging and transportation.

- If you are not able to attend the reception center and require support, call **250-486-1890**.
- An ESS volunteer will return your call.

ESS is a safety net program available when alternatives such as family, friends, and insurance cannot be accessed. ESS is not offered if insurance is accessible. In situations where insurance exists, but cannot be immediately accessed, interim support may be provided.

Follow RDOS on Facebook Twitter YouTube LinkedIn

Website: emergency.rdos.bc.ca Email: eocinfo@rdos.bc.ca Phone: 250-490-4225

Voyent Alert! notifications – sign up for routine and emergency notifications

Issued by Director of RDOS EOC