

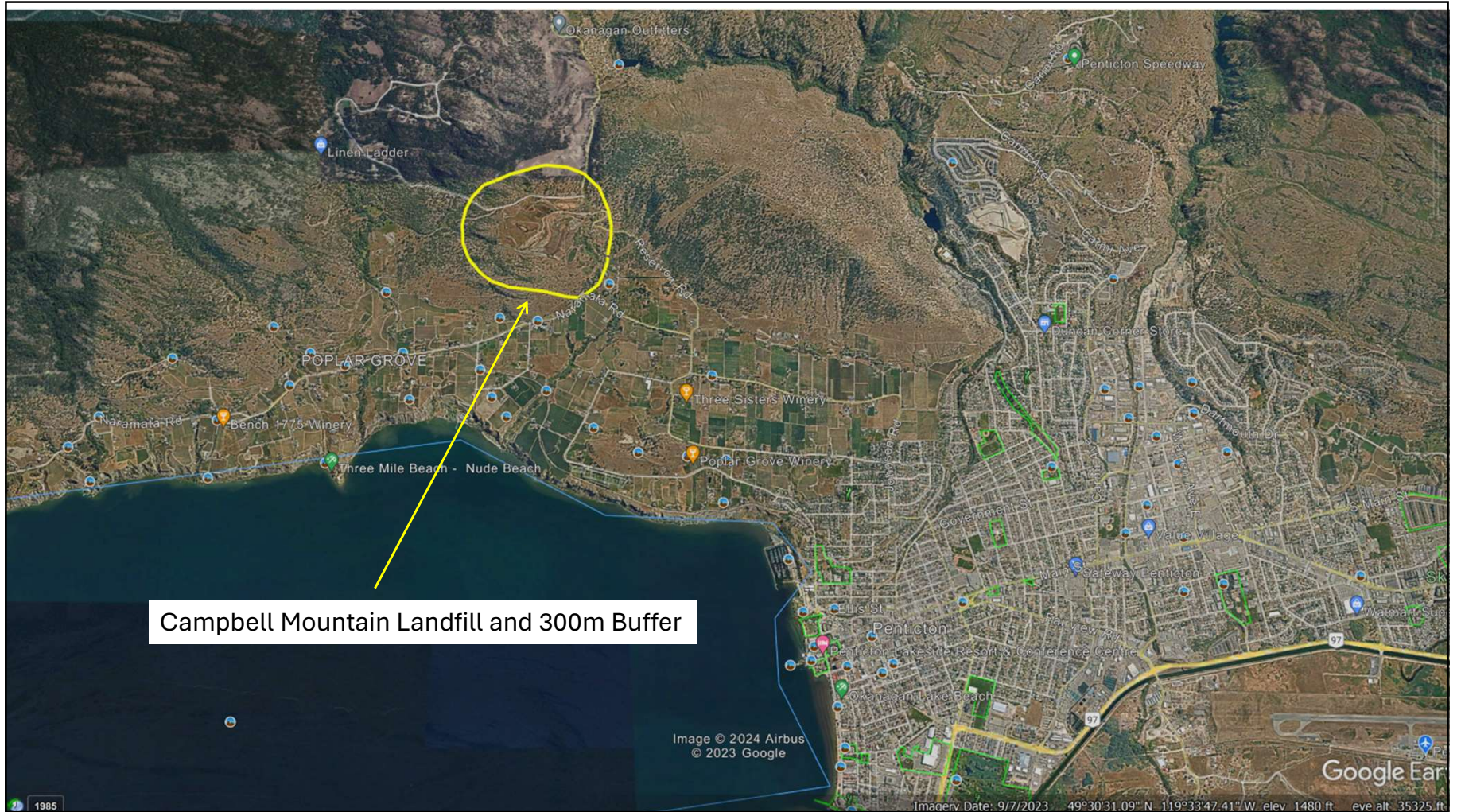
## A Plan to

- Build 200 Affordable homes on Provincial Lands
  - Prevent Campbell Mtn Landfill Lechate from contaminating Okanagan lake
  - Allow for future landfill expansion to the east by Abandoning Spiller Road

I have prepared a detailed presentation which, with the help of our local MLA, was shared with the Province 2 weeks ago. There are some problems with Penticton's Housing Task Force recommendations and the procedures with which they were created.

The Housing Minister took great interest in the ability this concept offers to provide 200 more affordable homes and has passed this on the Minister of Municipal Affairs to look further into the procedural issues

Last week I shared this same detailed information with all City Councillors



Campbell Mountain Landfill and 300m Buffer

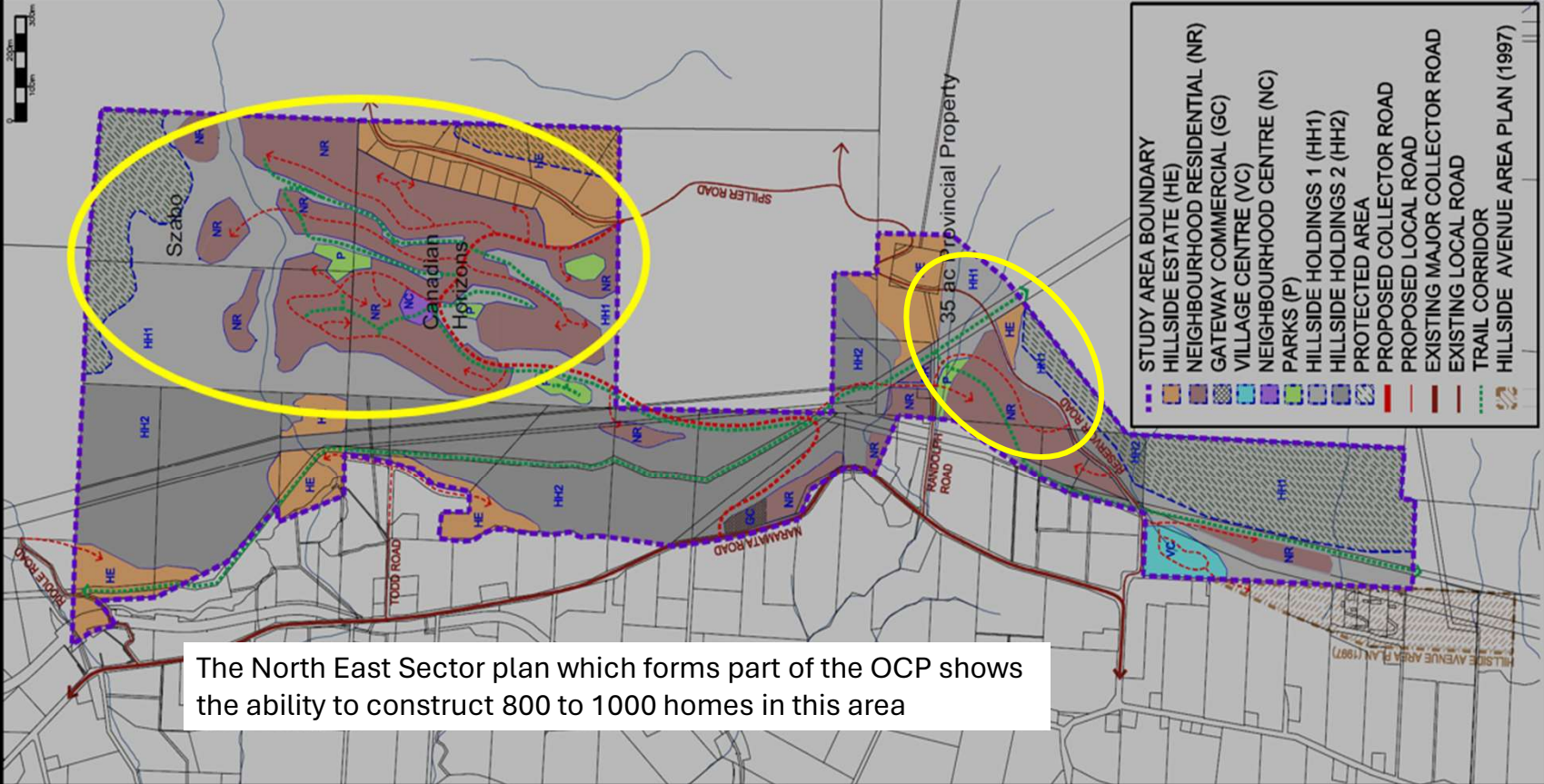


North East Sector Plan created at the City's request in 2014

# Future Land Use Plan

3.1

## SPILLER RD. / RESERVOIR RD. NEIGHBOURHOOD CONCEPT PLAN



The North East Sector plan which forms part of the OCP shows the ability to construct 800 to 1000 homes in this area



